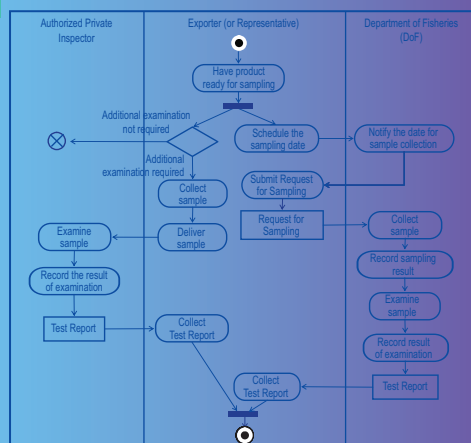
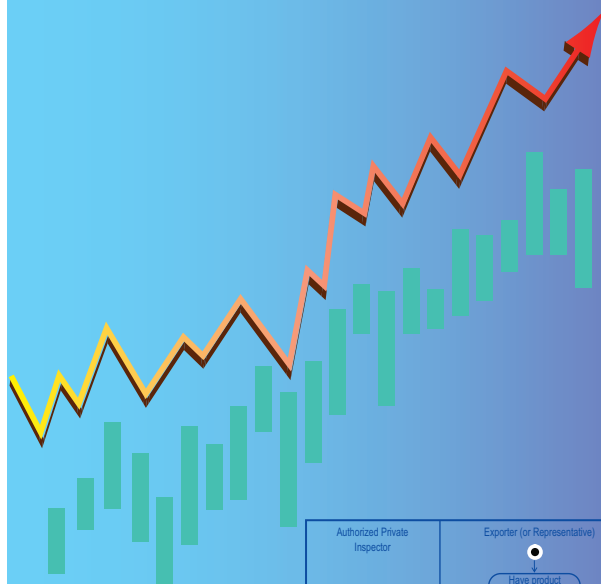




# TRADE FACILITATION IN ASIA AND THE PACIFIC: AN ANALYSIS OF IMPORT AND EXPORT PROCESSES

A STUDY BY THE ASIA-PACIFIC RESEARCH AND TRAINING  
NETWORK ON TRADE (ARTNeT) AND THE UNITED NATIONS NETWORK  
OF EXPERTS FOR PAPERLESS TRADE IN ASIA AND THE PACIFIC  
(UNNEXt)



The United Nations Economic and Social Commission for Asia and the Pacific (ESCAP) is the regional development arm of the United Nations and serves as the main economic and social development centre for the United Nations in Asia and the Pacific. Its mandate is to foster cooperation between its 53 members and 9 associate members. It provides the strategic link between global and country-level programmes and issues. It supports Governments of countries in the region in consolidating regional positions and advocates regional approaches to meeting the region's unique socio-economic challenges in a globalizing world. The ESCAP secretariat is located in Bangkok, Thailand. Please visit the ESCAP website at [www.unescap.org](http://www.unescap.org) for further information.



*The shaded areas of the map are ESCAP members and associate members.*

The Asia-Pacific Research and Training Network on Trade (**ARTNeT**) is an open regional network of research and academic institutions specializing in international trade policy and facilitation issues. Launched by ESCAP and the International Development Research Centre (IDRC), Canada in October 2004, it now includes over 30 leading national trade research institutions from over 20 countries in East, South and South-East Asia and the Pacific as members. ARTNeT aims at increasing policy-oriented trade research in the region by harnessing the research capacity already available and developing additional capacity. For more information on ARTNeT, please visit [www.artnetontrade.org](http://www.artnetontrade.org).

The United Nations Network of Experts for Paperless Trade in Asia and the Pacific (**UNNExT**) is a community of knowledge and practice for experts from developing countries and transition economies from Asia and the Pacific involved in the implementation of electronic trade systems and trade facilitation. Established by ESCAP and the United Nations Economic Commission for Europe (UNECE), UNNExT aims to support national, subregional and transcontinental Single Window and paperless trade initiatives. Its emphasis is on training, knowledge sharing and application of international standards for trade facilitation. For more information on UNNExT, please visit [www.unescap.org/unnex](http://www.unescap.org/unnex).

The Trade and Investment Division (TID) of ESCAP serves as the Secretariat of both the ARTNeT and UNNExT networks.

## TRADE FACILITATION IN ASIA AND THE PACIFIC: AN ANALYSIS OF IMPORT AND EXPORT PROCESSES

A Study by the Asia-Pacific Research and Training Network  
on Trade (ARTNeT) and the United Nations Network of Experts  
for Paperless Trade in Asia and the Pacific (UNNExT)



**United Nations**  
New York, 2011



# **STUDIES IN TRADE AND INVESTMENT 71**

## **TRADE FACILITATION IN ASIA AND THE PACIFIC: AN ANALYSIS OF IMPORT AND EXPORT PROCESSES**

**A Study by the Asia-Pacific Research and Training Network on Trade (ARTNeT) and the United Nations Network of Experts for Paperless Trade in Asia and the Pacific (UNNExT)**

United Nations Publication

Sales No. E.12.II.F.3

Copyright © United Nations 2011

All rights reserved

Printed in Thailand

ISBN: 978-92-1-120637-1

e-ISBN: 978-92-1-055277-6

ST/ESCAP/2615

Reference to dollars (\$) are to United States dollars unless otherwise stated.

The designations employed and the presentation of the material in this publication do not imply the expression of any opinion whatsoever on the part of the secretariat of the United Nations concerning the legal status of any country, territory, city or area, or of its authorities, or concerning the delimitation of its frontiers or boundaries.

### **Disclaimers**

The opinions, figures and estimates set forth in this publication are the responsibility of the authors, and should not be considered as reflecting the views or carrying the endorsement of the United Nations or of ARTNeT members or partners.

Mention of specific names and commercial products and services does not imply the endorsement of the United Nations.

The use of the publication for any commercial purposes, including resale, is prohibited, unless permission is first obtained from the ARTNeT or UNNExT secretariats. Request for permission should state the purpose and the extent of reproduction. For non-commercial purposes, all material in this publication may be freely quoted or reprinted, but acknowledgement is required, together with a copy of the publication containing the quote or reprint.

## Preface

Given the potential benefits of reducing red tape in making participation in international trade more inclusive, the Asia-Pacific Research and Training Network on Trade (ARTNeT) Multi-stakeholder Steering Committee endorsed the launch of a new regional study titled “Improving Import-Export Processes and Procedures in Asia” in 2009. A research team was assembled spanning South, South-East and East Asia, and was tasked to analyze the processes involved in importing and exporting specific products of strategic importance to developing countries of the region, in order to identify bottlenecks and areas for improvement at the national, bilateral and regional levels.

In addition to building the capacity of researchers in conducting business process analysis (BPA), the study also aimed at deepening understanding of how to facilitate intraregional trade and assess progress in this area. This publication brings together the main research findings and outputs produced by the ARTNeT team during 2010/11, with the support of the United Nations Network of Experts for Paperless Trade in Asia and the Pacific (UNNExT).

This publication is divided into two parts. Part I of this publication features a synthesis of the main findings and implications from the country studies, including a brief overview of the trade facilitation situation in Asia and the Pacific. Part II consists of summaries of the seven country studies on which the synthesis is based. All of the country studies were released in full as ARTNeT Working Papers (see [www.artnetontrade.org](http://www.artnetontrade.org)) during the course of 2011, following presentation of preliminary results during the Second Asia-Pacific Trade Facilitation Forum (APTFF), held in Kuala Lumpur, Malaysia, in October 2010. Results and policy implications of these studies were also presented at the Third Asia-Pacific Trade Facilitation Forum (APTFF), held in Seoul, Republic of Korea, in October 2011.

## Acknowledgements

This publication was prepared by Yann Duval, Trade Facilitation Section, ESCAP and Prabir De, Research and Information System for Developing Countries (RIS, India), based on country studies conducted in Bangladesh, China, India, Japan, Nepal, Sri Lanka and Thailand by Syed Saifuddin Hossain and Md. Tariqur Rahman of the Centre for Policy Dialogue (CPD, Bangladesh); Bala Ramasamy of the China Europe International Business School (CEIBS, China); Prabir De; Naoko Shinkai and Zenebe Bashaw of Nagoya University (Japan); Pushpa Raj Rajkarnikar of the Institute for Policy Research and Development (IPRAD, Nepal); Deshal de Mel, Suwendrani Jayaratne and Dharshani Premaratne of the Institute of Policy Studies (IPS, Sri Lanka); and Somnuk Keretho and Saisamorn Naklada of Kasetsart University (Thailand), respectively.

The regional research team was assembled and coordinated by Yann Duval, under the general supervision and guidance of Ravi Ratnayake and Shamika Sirimanne. Advices and reviews were gratefully received from two ARTNeT Advisors, namely, Florian Alburo of the University of the Philippines and Sok Siphana, Advisor to the Royal Government of Cambodia and member of the UNNExT Advisory Group on Business Process Analysis. The support of Mikiko Imai Ollison of the World Bank Doing Business Team in providing disaggregated data on the Trading Across Border Indicators for the study is very much appreciated. The study also benefited from helpful suggestions from Markus Pikart of UNECE, Mia Mikic and Salehin Khan of ESCAP and Somnuk Keretho and Thayanan Phuaphanthong of the Institute for Information Technology Innovation, Kasetsart University.

The research effort was carried out with the aid of a grant from the International Development Research Centre (IDRC, Canada).

The assistance of Bongkojmanee Kohsuwan, Juraporn Sinlapharajanapanich and Tavitva Ruyaphorn in finalizing and formatting this publication is appreciated. English editing was provided by Ellie Meleisea.

## CONTENTS

*page*

<b>Preface</b> .....	iii
<b>Acknowledgements</b> .....	iv
<b>List of Contributors</b> .....	viii
<b>Abbreviations and Acronyms</b> .....	x

### Part I Synthesis report

<b>Introduction</b> .....	3
<b>A. Trade Facilitation in the Asia-Pacific Region: An Overview</b> .....	4
<b>B. Scope of the Study and Methodology</b> .....	9
<b>C. Analysis of Regional Trade Processes and Procedures: Major Findings</b> .....	13
1. Parties involved in export and import and importance of the private sector .....	15
2. Number of documents in the export and import processes .....	16
3. Direct costs of the export and import processes .....	19
4. Export and import process time: import-export time procedure charts ..	22
5. Export and import time: cross-country analysis .....	32
6. Beyond trade time and cost averages: Other findings .....	36
<b>D. Conclusions and Policy Recommendations</b> .....	41
<b>E. Limitations and Future Research</b> .....	46
<b>Bibliography</b> .....	48

### Part II Summaries of the country studies

<b>Bangladesh:</b> Facilitating Trade through Simplification of Trade Processes and Procedures in Bangladesh .....	63
<b>China:</b> An Analysis of Import-Export Procedures and Processes in China .....	64
<b>India:</b> Trade Facilitation in India: An Analysis of Trade Processes and Procedures .....	66

## CONTENTS (*continued*)

	<i>page</i>
<b>Japan:</b> Regional Cooperation for Improvement of Trade Procedures: The Case of Japan .....	68
<b>Nepal:</b> Improving Regional Trade Procedures and Processes: A Business Process Analysis of Exports of Vegetable Ghee from Nepal to India and China and Imports of Textiles from India to Nepal .....	69
<b>Sri Lanka:</b> Improving Import-Export Procedures and Processes in Sri Lanka	70
<b>Thailand:</b> Analysis of Export and Import Processes of Selected Products in Thailand .....	71

### List of figures

Figure 1. Comprehensive trade costs (CTC) and CTC excluding tariff costs (NT-CTC) between selected economies and the USA .....	5
Figure 2. Intraregional agricultural and manufacturing comprehensive trade costs .....	8
Figure 3. Time Procedure Chart: Trade in cotton yarn from India to Bangladesh	24
Figure 4. Time Procedure Chart: Trade in electronic devices from China to Thailand .....	25
Figure 5. Time Procedure Chart: Trade in garments from China to Japan .....	26
Figure 6. Time Procedure Chart: Trade in rubber tires from Sri Lanka to India ..	27
Figure 7. Time Procedure Chart: Trade in sugar from Thailand to Bangladesh ..	28
Figure 8. Time Procedure Chart: Trade in tea from Sri Lanka to Japan .....	29
Figure 9. Export time for selected products and countries in Asia (adjusted)* ....	33
Figure 10. Import time for selected products and countries in Asia (adjusted)* ....	33
Figure 11. Average maximum delays, by type of trade procedures .....	41

### List of tables

Table 1. Intra- and extra- regional trade costs in the Asia-Pacific region, excluding tariff costs (2007/2009) .....	7
Table 2. Country and product coverage of the study .....	9
Table 3. Business processes, documents, time and costs of export processes	13
Table 4. Business processes, documents, time and costs of import processes	14
Table 5. Public and private sector involvement in the export of sugar from Thailand .....	15



## **CONTENTS (*continued*)**

	<i>page</i>
Table 6. Number of documents required for exports and imports .....	16
Table 7. Indian export of fabric to Bangladesh – Processes and submission of documents .....	18
Table 8. Costs of trade in cotton yarn from India to Bangladesh .....	20
Table 9. Costs of trade in rubber tyres from Sri Lanka to India .....	21
Table 10. Costs of trade in sugar from Thailand to Bangladesh .....	22
Table 11. Trading across borders: Comparisons with the World Bank Doing Business Database (DBD)*, 2011 .....	36
Table 12. Main differences of BOI and Non-BOI processes in Sri Lanka .....	40

### **List of boxes**

Box 1. An international supply chain model .....	10
Box 2. Introduction to the Unified Modelling Language for BPA .....	12
Box 3. UML Case Diagram: Export of fabric from India to Bangladesh .....	31
Box 4. Procedure for receiving preferential quota in Nepal .....	38

## Contributors

**Prabir De** is a Fellow at the Research and Information System for Developing Countries (RIS), New Delhi, India. De was a visiting research scholar of the Asian Development Bank Institute (ADBI), Tokyo, the Korea Institute of International Economic Policy, Seoul and ESCAP, Bangkok. De works in the field of international economics and has research interests in international trade and development issues. E-mail: prabirde@hotmail.com

**Deshal de Mel** completed his Master in Science in International Political Economy at the London School of Economics. At present, de Mel works in Sri Lanka as an economist in the Strategic Business Development Unit at Hayleys PLC. De Mel was previously attached to the Institute of Policy Studies of Sri Lanka where he conducted research on various subjects, including international trade, trade in services and regionalism. He participated in trade negotiations for the Government of Sri Lanka during negotiations of the Comprehensive Economic Partnership Agreement with India.

**Yann Duval** is Acting Chief of the Trade Facilitation Section in the Trade and Investment Division of ESCAP. He has been instrumental in the creation and development of the Asia-Pacific Research and Training Network on Trade (ARTNeT). As coordinator of ARTNeT trade facilitation research, he has overseen delivery of, and directly contributed to, various regional studies in this area. His current work focuses on estimating intraregional trade costs, trade process analysis and development of the United Nations Network of Experts for Paperless Trade in Asia and the Pacific (UNNExT). E-mail: duvaly@un.org

**Syed Saifuddin Hossain** is a Senior Research Associate at the Centre for Policy Dialogue in Dhaka. Key areas of his research interests include trade facilitation, regional connectivity, intellectual property rights, dispute settlement and public policy. Prior to completing a Masters degree in International Customs Law and Administration at the University of Canberra, Australia in 2008, Saif earned a Masters degree in International Relations at the University of Dhaka in Bangladesh. Saif has been a member of trade facilitation and transit related national bodies set up by the Government of Bangladesh. E-mail: saif.hossain@gmail.com

**Suwendrani Jayaratne** completed her undergraduate studies at the University of Peradeniya in Sri Lanka, majoring in economics, and is currently engaged in higher studies at the Australian National University in Canberra, Australia. Previously, she was a Research Officer attached to the Institute of Policy Studies in Sri Lanka for a period of 3 years. Her research interests include international trade, trade facilitation and regional integration.

**Somnuk Keretho** is the Director at the Institute for Information Technology Innovation, a research and development institute of Kasetsart University. He has led several strategic information and communications technology enabled projects and e-logistics initiatives including “Thailand Single Window e-Logistics” related projects and automatic electronic gate systems development for the Bangkok Port and Laemchabang Sea Port and related software development. E-mail: sk@ku-inova.org

**Saisamorn Naklada** is a Project Manager at the Institute for Information Technology Innovation at Kasetsart University in Thailand. She took a major role in many ICT-enabled projects and initiatives, including the Data Harmonization project funded by Asia-Pacific Economic Cooperation, the ASEAN-funded “Project to develop ASEAN technical architecture framework for e-commerce interoperability”, the development of paper digitization law and the rules for e-transaction promotion project of Thailand. E-mail: [saisamorn@ku-inova.org](mailto:saisamorn@ku-inova.org)

**Dharshani Premaratne** is an Economist, currently reading for her higher studies at the Australian National University (ANU) in Canberra, Australia. She was a researcher at the Institute of Policy Studies in Sri Lanka for three years until July 2011 and has worked in the areas of multilateral and regional integration, trade facilitation, energy cooperation and migration and remittances. E-mail: [darshinip02@gmail.com](mailto:darshinip02@gmail.com)

**Md. Tariqur Rahman** is a Senior Research Associate at the Centre for Policy Dialogue, a leading civil society think-tank in Bangladesh. He completed his graduate and post-graduate degrees in economics at the University of Dhaka, Bangladesh. His major areas of interest are in theoretical and quantitative economics. Tariq has authored a number of studies that have been published at home and abroad by international organizations, including ESCAP and the Asian Development Bank. E-mail: [rahmantariqdu@gmail.com](mailto:rahmantariqdu@gmail.com)

**Pushpa Raj Rajkarnikar** is the Chairman of Institute for Policy Research and Development in Kathmandu, Nepal. He was member of the National Planning Commission and the Deputy Governor of Nepal Rastra Bank, the central bank of Nepal. Previously, he had been Chairman, a member of the Board of Directors and Chief Executive of various government agencies, corporations and private sector banks. E-mail: [pushparajrajkarnikar@yahoo.com](mailto:pushparajrajkarnikar@yahoo.com)

**Bala Ramasamy** is a Professor of Economics at the China Europe International Business School in Shanghai, the People's Republic of China. His research interests are in the areas of international trade, foreign direct investment and corporate social responsibility. Email: [bramasamy@ceibs.edu](mailto:bramasamy@ceibs.edu)

**Naoko Shinkai** is an Associate Professor of the Graduate School of International Development at Nagoya University. She is currently interested in the areas of socio-economic impact assessment of trade policy reforms, poverty reduction, evaluation of development projects, and the effectiveness of development assistance and industrial development. The list of her publications and conference presentations is available at: <http://www.gsid.nagoya-u.ac.jp>

**Zenebe Bashaw Uraguchi** is an International Adviser of HELVETAS Swiss Intercooperation (HSI) for rural economics in Bangladesh. He received his PhD in International Development from the Graduate School of International Development (GSID) of Nagoya University. He has extensive experience and interest in development (micro) economics, focusing particularly on income, employment and food security in Asia and Sub-Saharan Africa. Currently, he is widely involved in rural market development issues, addressing private sector engagement (PSE), value chain development and service markets for access to finance, market information and inputs.

## Abbreviations and Acronyms

APEC	Asia-Pacific Economic Cooperation
ARTNeT	Asia-Pacific Research and Training Network on Trade
AEC	ASEAN Economic Community
ASEAN	Association of Southeast Asian Nations
BOI	Board of Investment
BPA	Business Process Analysis
COO	Certificate of Origin
CCH	Chittagong Customs House
CUSDEC	Customs Declaration
DBD	Doing Business Database
EU	European Union
FTA	Free Trade Agreement
FTZ	Free Trade Zone
ICT	Information and Communications Technology
LCS	Land Customs Station
LDC	Least Developed Country
LPI	Logistics Performance Index
MFN	Most Favoured Nation
NAFTA	North American Free Trade Agreement
NSW	National Single Window
PPP	Public Private Partnership
RMG	Ready-Made Garments
SAFTA	South Asian Free Trade Agreement
SMEs	Small and Medium-sized Enterprises
TEU	Twenty-foot Equivalent Unit
TF	Trade Facilitation
UN	United Nations
UN/CEFACT	United Nations Centre for Trade Facilitation and E-business
UML	Unified Modelling Language
UNNExT	United Nations Network of Experts for Paperless Trade in Asia and the Pacific
UNECE	United Nations Economic Commission for Europe
WTO	World Trade Organisation

**Part I**

**Synthesis Report**



## Introduction

Trade facilitation, defined broadly in this study as “measures aimed at streamlining trade procedures and reducing the cost and uncertainties of international trade transactions”, has become an important area of focus for countries seeking continuous growth and development through trade. During the past two decades, import tariffs have decreased significantly and non-tariff measures aimed at further reducing international trade costs have gained more importance in promoting trade across countries. Indeed, costs associated with regulatory procedures, waiting time (delays) and unpredictability of delivery dates can have a significant impact on trade.<sup>1</sup> Even if international shipping and other non-tariff costs are excluded, costs associated with completing documentary and related regulatory import and export procedures for international trade can account for up to 15 per cent of the value of traded goods.<sup>2</sup> This is particularly true for intermediate goods, where delays in shipment of goods in one country increase the cost of production of the final good in another country.

Moving goods across borders requires meeting a vast number of commercial, transport and regulatory requirements, which typically entail complex procedures and often a large number of documents.<sup>3</sup> While most actors and regulators along the international supply chain are aware of the need to streamline import and export procedures, few, if any, have a complete understanding of the entire trade transaction process, making it difficult to identify the bottlenecks and to prioritize reforms.

Trade procedures and their effect on the overall movement of goods across borders and competitiveness vary across products traded, as well as trade routes, modes of transport, and origin and destination of the products. Therefore, while the broad trade facilitation performance indicators developed in recent years are useful to secure political will for reform and identify important trade facilitation measures,<sup>4</sup> a more detailed

---

<sup>1</sup> On average, each additional day that a cargo is delayed prior to being shipped reduces trade volume by at least 1 per cent, and by approximately 7 per cent if the products are time-sensitive to time-insensitive agricultural goods (Djankov et al., 2010). In the context of South Asia, De (2011b) found that a 10 per cent fall in transaction costs at borders increases a country's exports by about 2 per cent. He also found evidence that e-filing of customs documents has a significant positive effect on trade flows, supporting the need for implementation of paperless trade systems in that region of Asia.

<sup>2</sup> Asian Development Bank and United Nations Economic and Social Commission for Asia and the Pacific (2009).

<sup>3</sup> See, for example, World Bank's Doing Business Report 2011 (World Bank, 2010a).

<sup>4</sup> For example, using such indicators, Duval and Utoktham (2011a) found that increasing port and maritime services efficiency, enhancing access to ICT facilities and improving the domestic business environment are essential in reducing trade costs in Asia. This is consistent with the findings of Shepherd and Wilson (2009), who found that trade flows in member countries of the Association of Southeast Asian Nations (ASEAN) are particularly sensitive to transport infrastructure and information and communication technology (ICT) networks. Both studies suggest that gains from trade facilitation reform in Asia would be larger than those that may be achieved through further tariff reductions.

understanding of international trade transactions is needed for developing economies to design effective policy interventions for trade facilitation. Such understanding is particularly needed intraregionally, as growth potential continues to shift away from developed countries to economies within the Asian and the Pacific region.

In this context, the ARTNeT study on “Regional Import-Export Procedures and Processes”, presented here, aimed at deepening understanding of the processes firms face when engaging in international trade, particularly intraregional trade. This Synthesis Report brings together findings and results from more than a dozen product-specific import and export process analyses conducted in a coordinated manner in Bangladesh, China, India, Japan, Nepal, Sri Lanka and Thailand during the course of 2010. A unique feature of the study is that it provides an integrated view and performance information for selected products on the entire trade process between developing countries of the region, covering both procedures in the exporting (origin) countries and the procedures in the importing (destination) countries.

The rest of the Report is arranged as follows. Following a brief overview of trade facilitation in Asia and the Pacific in Section A, Section B describes the scope and methodological aspects of the regional study. The major research findings from the seven country studies are then presented in Section C. Section D features conclusions and policy implications. Limitations and future research are discussed in Section E.

## **A. Trade Facilitation in the Asia-Pacific Region: An Overview**

Measuring trade facilitation performance precisely, including the costs of international trade transactions, remains a challenging exercise, not least because of the lack of a precise definition and agreement on the various cost components that should be included in such measurements. Comprehensive trade cost estimates by the United Nations Economic and Social Commission for Asia and the Pacific (ESCAP) account for all additional costs involved in conducting a transaction across borders rather than within borders.<sup>5</sup> According to ESCAP’s Trade Cost Database, aside from Singapore and Hong Kong, China, top-ranked economies in terms of low trade cost include Malaysia, the United States of America (USA), China, the Republic of Korea and Thailand, with Japan and Germany following closely.<sup>6</sup> However, trade cost performance of a given country varies significantly depending on its trading partners, as well as the type of goods traded.

---

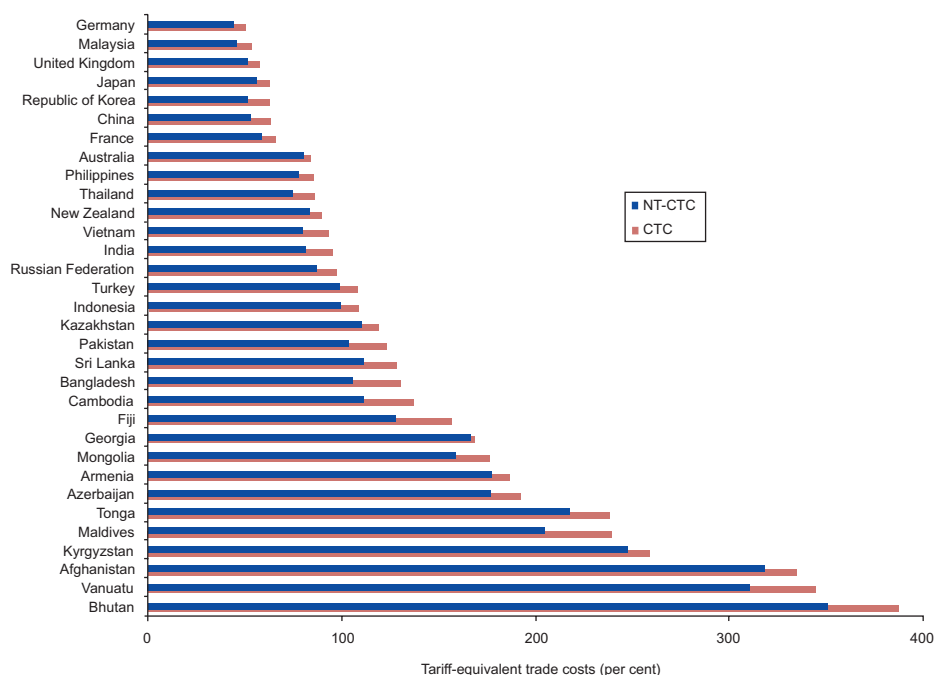
<sup>5</sup> The comprehensive trade cost estimate is an objective measure based on macroeconomic data rather than perception survey data. It is a very broad aggregate measure of international trade costs including, inter alia, direct and indirect costs related to fulfilling regulatory import and export requirements as well as costs resulting from differences in currencies, languages, culture and geographical distances. Domestic and international shipping and logistics costs associated with imports and exports are also included.

<sup>6</sup> For details, see Duval and Utoktham (2011b).



Although ESCAP estimates reveal that many economies of the region have made significant progress in reducing costs over the past decade, they also show that in many cases nearly half the cost reduction may be attributed to tariff cuts.<sup>7</sup> Typically, tariff trade costs account for no more than 10 per cent of overall trade costs. This is illustrated in Figure 1, which shows that while tariff costs do affect the relative trade cost ranking of selected countries (with the USA), they often account for a very small portion of overall trade costs. As tariffs continue to fall – in part due to implementation of free trade commitments under recent bilateral and regional trade agreements – countries aiming to maintain their competitiveness will have to pay greater attention to non-tariff trade costs, including those arising from unnecessarily cumbersome procedures and regulations or inadequate logistics services.

**Figure 1. Comprehensive trade costs (CTC) and CTC excluding tariff costs (NT-CTC) between selected economies and the USA**



Source: ESCAP Trade Cost Database (version 2), 2011.

<sup>7</sup> See ESCAP (2011a).

Many countries in the region have reduced export and import times and corresponding documentary requirements over the past decade. However, the time required for the completion of import and export procedures in developing economies of the region is, on average, about three times higher than it is in developed economies (see Annex 1).<sup>8</sup> Between 2005 and 2011, the time it took to complete all trade procedures involved in moving goods from factory to ship at the nearest seaport – or vice versa – decreased, on average, by 18 per cent in developing economies in the Asia-Pacific region. South-East Asia made the most progress, cutting its average time for completing trade procedures to 20 days. Cambodia and Thailand cut their time by more than 40 per cent during the same period. India and Pakistan achieved improvements of a similar magnitude, although trade procedures in South and South-West Asia still take 50 per cent more time to complete than in South-East Asia (30 days on average). The landlocked economies in North and Central Asia made some small improvements, but the time taken by most of the economies of that subregion to clear procedures for moving goods to a seaport remains lengthy (50 days on average). No significant progress was made in the Pacific.

Considering their regulatory trade procedures and the quality and availability of services available to move goods within and across countries,<sup>9</sup> a few countries in the Asia-Pacific region, such as China and Thailand, now have relatively well-developed logistics systems for international trade. However, many other countries, such as Bangladesh and Nepal, still lag well behind regional averages in most of the logistics performance indicators (see Annex 2). Further improvement in trade facilitation is therefore needed.

Trade facilitation improvements are particularly needed intraregionally. With the shifting of growth potential away from developed countries to economies within the Asian and the Pacific region, intraregional trade has become more important. As shown in Table 1, the intraregional comprehensive costs of trade in goods have fallen in almost all regions, but these costs remain high compared to those among European Union (EU) countries. According to the latest estimates available,<sup>10</sup> non-tariff comprehensive trade costs between China, the Republic of Korea and Japan (East Asia-3) are among the lowest in the world, averaging less than 50 per cent tariff-equivalent in 2007-2009. This is remarkable given the absence of free trade agreements between those countries during that period. The largest middle-income members of the Association of Southeast Asian Nations (ASEAN), i.e. Indonesia, Malaysia, the Philippines and Thailand, or ASEAN-4, have also achieved high levels of international trade efficiency; but average trade costs among other ASEAN members, in particular its two least developed countries, are still

<sup>8</sup> The Annex is based on data from the latest World Bank Doing Business Report 2012, released during the fourth quarter of 2011.

<sup>9</sup> As discussed in Brooks and Stone (2010), supply chains that span the region rely on efficient cross-border movement of goods. The combination of efficient logistics services and regulatory procedures can lead to cost savings equivalent to moving production to locations closer to trading partners, helping to attract foreign direct investment.

<sup>10</sup> ESCAP Trade Cost Database (Version 2) released in December 2011. For details, see Duval and Utoktham (2011a), "Trade Costs in Asia and the Pacific: New bilateral and Sectoral Estimates".

**Table 1. Intra- and extra-regional trade costs in the Asia-Pacific region, excluding tariff costs (2007/2009)**

	ASEAN-4	East Asia-3	North & Central Asia	SAARC-4	AUS-NZL	EU-3	USA
<b>ASEAN-4</b>	<b>79%</b> (-9.5%)	73% (-5.9%)	291% (-14.2%)	134% (2.1%)	90% (-12.3%)	97% (-4.9%)	77% (3.0%)
<b>East Asia-3</b>	73% (-5.9%)	<b>47%</b> (-21.1%)	187% (-32.7%)	119% (-2.8%)	78% (-15.7%)	70% (-19.0%)	53% (-13.5%)
<b>North &amp; Central Asia</b>	291% (-14.2%)	187% (-32.7%)	<b>149%</b> (-20.5%)	270% (-22.4%)	270% (-22.2%)	149% (-26.0%)	165% (5.0%)
<b>SAARC-4</b>	134% (2.1%)	119% (-2.8%)	270% (-22.4%)	<b>113%</b> (5.0%)	130% (-2.7%)	101% (-3.2%)	99% (5.9%)
<b>AUS-NZL</b>	90% (-12.3%)	78% (-15.7%)	270% (-22.2%)	130% (-2.7%)	<b>45%</b> (-23.5%)	89% (-17.0%)	82% (-11.1%)
<b>EU-3</b>	97% (-4.9%)	70% (-19.0%)	149% (-26.0%)	101% (-3.2%)	89% (-17.0%)	<b>32%</b> (-32.6%)	51% (-18.2%)
<b>USA</b>	77% (3.0%)	53% (-13.5%)	165% (-17.3%)	99% (5.9%)	82% (-11.1%)	51% (-18.2%)	

Source: ESCAP Trade Cost Database (version 2), 2011.

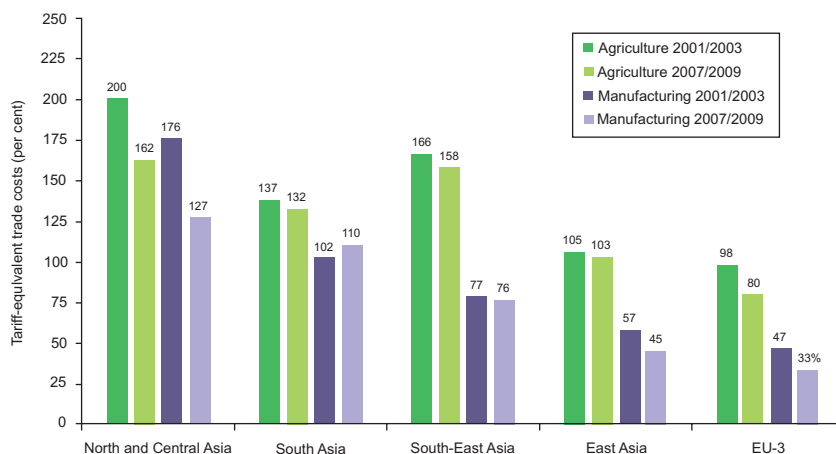
Note: Trade costs may be interpreted in percentage of value of goods (tariff equivalents). Percentage changes in trade costs between 2001/2003 and 2007/2009 are in parentheses. ASEAN-4: Indonesia, Malaysia, the Philippines and Thailand; East: China, Japan and Korea; NC (North and Central Asia): Armenia, Azerbaijan, Georgia, Kazakhstan, Kyrgyzstan, and Russian Federation; SAARC-4: Bangladesh, India, Pakistan and Sri Lanka; AUS/NZL: Australia and New Zealand; EU-3: France, Germany, and the United Kingdom.

more than double those among the East Asia-3 economies. Intraregional trade costs among North and Central Asian countries, at 149 per cent, are highest in the region, followed by those among South Asian countries, at 113 per cent.

While improvements have been made within many subregions in Asia, trade costs between Asian subregions are often higher than those between Asian subregions and regions outside Asia. For example, the non-tariff costs of trade between ASEAN members and members of the South Asian Association for Regional Cooperation (SAARC) are, on average, nearly double the costs of trade between ASEAN members and the USA. Similarly, the costs of trade between the countries making up North and Central Asia and those of South Asia are nearly double the costs of trade between the countries of North and Central Asia and those of the European Union.

Intraregional agricultural trade costs also remain much higher than manufacturing trade costs, as illustrated in Figure 2. This is partly explained by the nature of the products (e.g. perishability), which can make these products harder to trade across borders, as well as the higher level of regulations these products attract for food safety or food security reasons.<sup>11</sup> However, the fact that the cost premiums for trading agricultural goods vary widely from country to country suggests that there is significant scope for reduction in costs in many countries of the region.

**Figure 2. Intraregional agricultural and manufacturing comprehensive trade costs**



Source: ESCAP Trade Cost Database (version 2), 2011.

In order to bring down transaction costs, two important policy measures are common in most of the countries in the region: rationalization of trade procedures and improvement of trade-related infrastructure.<sup>12</sup> While the latter often requires massive amounts of capital, implementation of the former can begin quickly if the political will is there. Furthermore, rethinking procedures involved at each step of the import and export process lead to more efficient use of existing trade-related infrastructure, e.g. through enabling the same port infrastructure and customs clearance checkpoints to handle more ship arrivals or traffic as goods move more quickly through the facilities.

Simplification of trade processes and procedures is therefore increasingly recognized as key to improving competitiveness of exports across the countries in the region. For example, the Indian Government's task force report for reduction of transaction costs in exports recently identified (i) cutting red tape at the point where goods enter India and

<sup>11</sup> For more details on this issue, see ESCAP (2011), "Facilitating Agricultural Trade in Asia and the Pacific", Trade and Investment Series No. 72.

<sup>12</sup> See ESCAP (2011b) and ESCAP (2006).

(ii) providing easier access to trade-related information, as two important measures for facilitating trade.<sup>13</sup> Similarly, the ASEAN Economic Community (AEC) Blueprint includes specific actions related to trade facilitation, namely, (i) developing simple, harmonized and standardized trade and customs processes, procedures and related information flows, (ii) integration of customs structures and the e-customs system and (iii) establishing national Single Windows as well as an integrated ASEAN Single Window, among others (Layton, 2007).

## B. Scope of the Study and Methodology

This regional study consists of seven coordinated country studies offering a more detailed picture of the business processes associated with importing and/or exporting selected goods from or to other countries within Asia. Refer to Table 2 for a summary of the countries and products covered by the study.

**Table 2. Country and product coverage of the study**

Import Processes	Export Processes							
		Bangladesh	China	India	Japan	Nepal	Sri Lanka	Thailand
	Bangladesh			Cotton Yarn				Sugar
	China				Fabrics*, Auto parts	Vegetable ghee (fuel)*		
	India	Garments*				Vegetable ghee*, Fabrics*	Rubber tyres	Auto parts*
	Japan	Shrimp*	Garments				Tea	
	Nepal			Textile & clothing*				
	Sri Lanka			Fabrics**	Used cars			
	Thailand		Electronics					

Notes: \* indicates import processes excluded from analysis; \*\* indicates export processes excluded from analysis.

<sup>13</sup> The report of the task force to reduce transaction costs in exports, released in February 2011 by the Government of India, recommended certain measures that are expected to save 210 billion Indian rupees (about \$450 million) for exporters every year. This amount represents about 0.02 per cent of India's exports, where exporters suffer transaction costs to the extent of between 7 and 10 per cent of exports. The task force report identified 44 issues, where closure has been achieved on 23. For further details, refer to Government of India (2011).

Relevant procedures were identified and mapped using a common method outlined in the UNNExT *Business Process Analysis Guide to Simplify Trade Procedures*, a guide developed by trade facilitation and paperless trade practitioners – as opposed to academic or policy researchers.<sup>14</sup> The cost and time of the procedures were calculated as part of the analysis and provided an opportunity to benchmark results against relevant indicators from the World Bank Doing Business Report.<sup>15</sup>

The mix of intermediate and final products selected for analysis was initially chosen by the national researchers based on the importance of the product in their countries overall import or export market, as well the existence of government priorities in developing certain industries or products, when available. However, difficulties in obtaining relevant data, sometimes either in exporting or in importing countries, also affected the final mix of products analyzed.

The scope of the export process analyzed by ARTNeT researchers included all procedures directly involving the exporter (seller) or its representatives, from signature of the contract between buyer and seller to transportation of the goods onto a sea vessel (or, if by land, to the border checkpoint of the importing country), and receiving payment. The scope of the import process likewise generally included all procedures involving the importer (buyer), from the signature of the contract to transportation of the goods to the border (or seaport of the importing country) and delivery to the warehouse in the importing country. Thus, the studies generally covered the entire BUY-SHIP-PAY process (see Box 1). This is in contrast to the World Bank's Doing Business Report, which mostly excludes the BUY and PAY process, except for preparation of documents for a Letter of Credit (L/C), when calculating export and import time.

### Box 1. An international supply chain model

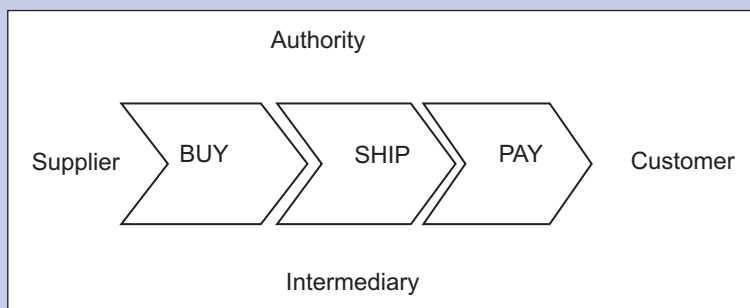
The United Nations Centre for Trade Facilitation and E-business (UN/CEFACT) illustrates a simplified view of the international supply chain in the Buy-Ship-Pay model in Recommendation No. 18 (as shown in the image below).<sup>16</sup> The model not only provides “a series of fragmented activities” carried out in an international trade transaction, but also defines the actors that are associated with them. Key actors in the international supply chain are authorities, intermediaries, suppliers and customers.

*The Business Process Analysis Guide to Simplify Trade Procedures*, prepared by UNNExT, UNESCAP and UNECE, notes that an international trade transaction encompasses

<sup>14</sup> UNESCAP, UNECE and UNNExT (2009) *Business Process Analysis Guide to Simplify Trade Procedures*. Available from [http://www.unescap.org/unnext/tools/business\\_process.asp](http://www.unescap.org/unnext/tools/business_process.asp)

<sup>15</sup> Definition as given in the World Bank Doing Business Database.

<sup>16</sup> United Nations Economic Commission for Europe. (2001). *Facilitation Measures Related to International Trade Procedures*. Recommendation 18, third revised edition, adopted by the United Nations Centre for Trade Facilitation. New York and Geneva: United Nations. Available from [http://www.unece.org/fileadmin/DAM/cefact/recommendations/rec18/Rec18\\_pub\\_2002\\_ecetr271.pdf](http://www.unece.org/fileadmin/DAM/cefact/recommendations/rec18/Rec18_pub_2002_ecetr271.pdf)



all activities related to the establishment of commercial contracts (commercial procedures), the arrangement of inland and cross-border transportation of goods (transport procedures), the export and import formalities to meet regulatory requirements (regulatory procedures) and the payment for purchased goods (financial procedures). Such transactions require cooperation between many actors, including traders, government agencies and service providers from different countries. Business Process Analysis (BPA) of international trade transactions is recommended as the first step to understanding the changes that will need to be made as part of the simplification, harmonization and automation of trade procedures and documents.

Researchers conducted their analysis on the basis of transactions involving a 20-foot container and payment by letter of credit, whenever these assumptions were consistent with actual practice, in order to facilitate comparison of the results across studies and with those of World Bank's Doing Business Report. In some cases, these assumptions were inconsistent with reality (e.g. used car imports in Sri Lanka; or export of garments from India) and were therefore relaxed.

Following the BPA methodology outlined in the UNNEXt *Business Process Analysis Guide to Simplify Trade Procedures*, information on import and export processes was collected essentially through interviews with a small number of key informants, i.e. buyers, sellers and intermediaries directly involved in the process being analysed. Interviews and consultations with relevant government agencies were also conducted whenever possible. Information was collected, for the most part, during the second and third quarters of the year 2010. Details on the number of interviews and mechanisms used by the national researchers in gathering and verifying information is available in the individual country studies summarized in Part II of this monograph, and available in full as ARTNeT working papers.

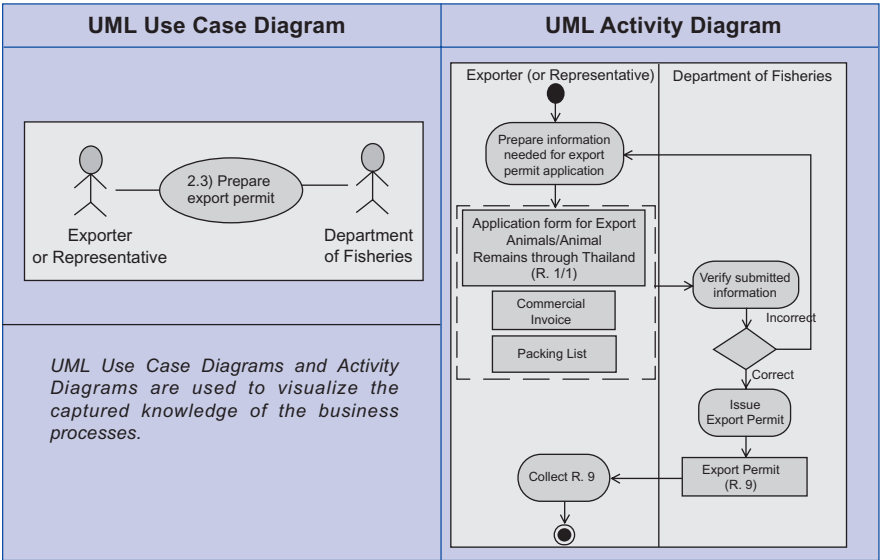
All researchers used the Unified Modelling Language (UML) to describe the various procedures and process analysed, greatly facilitating comparison of procedures across countries and improving understanding among the researchers (see Box 2).

**Box 2. Introduction to the Unified Modelling Language for BPA**

The UNNExT *Business Process Analysis Guide to Simplify Trade Procedures* introduces Unified Modelling Language as a standard way to graphically represent the various procedures involved in the trade process. Use of this common standard is essential to arrive at a description of a procedure that can be understood by all stakeholders involved in international trade transactions.

Unified Modelling Language provides a set of standard graphical notations for business process modelling.<sup>17</sup> These notations were used by ARTNeT researchers to draw a use case diagram and related activity diagrams for each product-specific import or export process they analysed. The Use Case Diagram serves as a project’s frame of reference. Its purpose is to present a graphical overview of core business processes that are subject to further examination in greater depth. It indicates all stakeholders that are involved in these business processes and demonstrates all actual associations between these business processes and stakeholders.

**Examples of Use Case and Activity Diagrams**



Source: UNNExT, UNESCAP, UNECE (2009).

The Activity Diagram is an elaboration of each business process displayed in the use case diagram. It portrays a sequence of activities and documentary flows from one responsible party to another. It informs its audience of who is doing what, in which order, and also of documentary inputs that serve as prerequisites to activities and documentary outputs that can be obtained after completing certain activities.

<sup>17</sup> See the UML Resource Page, <http://www.uml.org>



### C. Analysis of Regional Trade Processes and Procedures: Major Findings

The export process includes all trade-related procedures from the factory to loading of the cargo at the seaport (or crossing of land border), as well as relevant buy (e.g. signature of contract) and pay procedures. The import process includes all procedures from arrival at the seaport (or land border customs point) to delivery at the buyer's warehouse, as well as the buy and pay procedures. The number of steps involved in each process gives an indication of the complexity of the overall process. Tables 3 and 4 summarize the number of steps and parties involved in the export and import processes, as well as the documents required and the time and costs of the processes for the products and partner countries studied.

**Table 3. Business processes, documents, time and costs of export processes**

Export Process in	Product exported	Country of destination	Business Process		Documents Needed	Time	Cost
			No. of Steps	No. of Parties	(No.)	(Days)	(USD/TEU)
Bangladesh	Shrimp	Japan	10	14	24	36.75	500.00
Bangladesh	Garments	India	10 (8)	13 (12)	26 (17)	15.50	935.00
China	Garments	Japan	9	11	14	26.00	366.50
China	Electronics	Thailand	11	11	17	18.50	366.50
India	Cotton Yarn	Bangladesh	13	16	18	30.00	531.52
India	Vegetables	UAE	12	14	22	25.00	550.56
India	Fruits	EU	13	14	27	25.00	631.11
Japan	Automobile parts	China	–	–	–	19.00	369.00
Japan	Used cars	Sri Lanka	–	–	–	20.00	499.94
Nepal	Vegetable ghee	India	10	14	26	41.00	1 066.86
Nepal	Vegetable ghee	China	5	10	43	11.00	833.00
Sri Lanka	Rubber tyres	India	7	13	19	16.90	237.00
Sri Lanka	Tea	Japan	7	12	24	17.06	435.00
Thailand	Automobile parts	India	7	11	35	51.00	509.00

**Table 3. (continued)**

Export Process in	Product exported	Country of destination	Business Process		Documents Needed	Time	Cost
			No. of Steps	No. of Parties	(No.)	(Days)	(USD/TEU)
Thailand	Sugar	Bangladesh	11	10	39	13.00	430.00
Average			10	13	25	25.00	550.73
Coefficient of variation (CV)			0.25	0.14	0.28	0.43	0.40

Source: ARTNeT country studies.

Notes: The data shown is unadjusted for possible variations across studies in process scope and analysis method. In the case of Bangladesh exports of garments to India, numbers shown are for export through land borders, with numbers in parentheses representing business processes and documentation for export through seaports.

–: Data not available.

**Table 4. Business processes, documents, time and costs of import processes**

Import Process in	Product Imported	Country of origin	Business Process		Documents Needed	Time	Cost
			Steps involved	Parties involved	(No.)	(Days)	(USD/TEU)
Bangladesh	Cotton Yarn	India	5	8	10	10.00	415.00
Bangladesh	Sugar	Thailand	4	7	11	11.00	525.00
China	Automobile parts	Japan	6	11	13	14.50	513.00
China	Fabrics	Japan	6	11	13	10.50	586.00
India	Rubber tyres	Sri Lanka	10	13	9	22.00	359.50
Japan	Garments	China	–	–	–	21.50	–
Japan	Tea	Sri Lanka	–	–	–	15.50	410.00
Nepal	T&C*	India	5	10	20	8.00	320.00
Sri Lanka	Fabrics	India	7	13	19	6.55	677.00
Sri Lanka	Used cars	Japan	3	9	18	7.85	79.00
Thailand	Electronics	China	6	12	44	4.00	300.00
Average			6	10	17	11.95	418.45
Coefficient of variation (CV)			0.32	0.19	0.58	0.47	0.38

Source: ARTNeT country studies.

Note: The data shown is unadjusted for possible variations across studies in process scope and analysis method.

– Data not available; \*T&C: Textiles and Clothing.

# **1. Parties involved in export and import and importance of the private sector**

The findings of the seven ARTNeT country studies indicate that the number of parties and steps involved in export processes are comparatively higher than those in import processes.<sup>18</sup> The number of parties involved in export processes ranges from 10 (sugar exports from Bangladesh to Thailand and exports of vegetable ghee from Nepal to China) to 16 (exports of fabric from India to Bangladesh). In contrast, the number of parties involved in import processes ranges from 7 (sugar imports from Thailand to Bangladesh) to 13 (rubber tyre imports from Sri Lanka to India). Similarly, the number of steps involved in export processes ranges from 5 to 13, while that of import processes never exceeds 10. The study found that, based on the number of steps involved, the most complex process is the export from India of fabrics and fruits to Bangladesh and the EU, respectively.

Interestingly, the import and export process analyses show that, while many steps involve both public and private parties, a significant number of procedures involve only or mostly private parties. This is illustrated in Table 5, which shows that the majority of the steps (7 out of 12) for exporting sugar from Thailand to Bangladesh involve only private sector entities. This suggests that the efficiency of international trade processes crucially

**Table 5. Public and private sector involvement in the export of sugar from Thailand**

Export Process – Major Steps	Actors of Process (Private/Public)
Conclude sale contract and trade term	Private
Obtain export permit	Public and Private
Obtain cargo insurance	Private
Arrange transport	Private
Provide customs declaration	Private and Public
Collect containers from yard	Private
Stuff a container	Private and public
Clear goods through customs	Private and public
Handle container and stow on vessel	Private and public
Prepare documents required by importer	Private
Verify accuracy/authenticity of exported cargo	Private
Payment process	Private

Source: ARTNeT Working Paper 103.

<sup>18</sup> Nevertheless, the number of business process steps and corresponding parties involved in export are relatively less dispersed than that of imports, as per the coefficients of variation (CVs) presented in Table 2(a) and 2(b). Distributions with  $CV < 1$  are considered low-variance, while those with  $CV > 1$  are considered high-variance. Between any two variables, the variable with the smaller CV is less dispersed than the variable with the larger CV.

depends on the capacity of private actors to exchange information with each other and provide effective transport, logistics, payment and other services.

2. Number of documents in the export and import processes

The number of documents (types of documents) prepared as part of export processes ranges from 14 in the case of garment exports from China to Japan, to 43 for exports of vegetable ghee from Nepal to China (see Table 3 and Table 6). The number of documents prepared as part of import processes ranges from 9 in the case of rubber tyres imported from Sri Lanka into India, to an impressive 44 documents for imports of electronic parts from China into Thailand (see Table 4 and Table 6).<sup>19</sup>

Table 6. Number of documents required for exports and imports

(a) Export Process

Export In	Product	Destination	No. of Documents	
			Types	Copies
China	Garments	Japan	14	28
	Electronics	Thailand	14	22
India	Fabrics	Bangladesh	18	26
	Vegetables	United Arab Emirates	22	26
	Fruits	EU	27	29
Thailand	Auto parts	India	35	46
	Sugar	Bangladesh	39	50

<sup>19</sup> The number of documents reported here may not be fully comparable across country studies and may not be used for comparing their trade facilitation performance. Indeed, part of the variation in the number of documents may be associated with how each researcher counted the documents and which documents were considered. For example, in the case of the Thailand country study, all documents seem to have been accounted for, including application forms for certain regulatory documents and a wide array of transport documents, but this does not seem to have been the case in all studies. In this context, it is interesting to note that the number of documents for importing or exporting reported in ARTNeT studies are consistently higher than those reported in the World Bank Doing Business Database (DBD) – which may be partly explained by the fact that the DBD focuses on documents necessary as part of the regulatory process, while the ARTNeT studies accounted for all documents prepared as part of the trade process, regardless of their nature.

Table 6. (continued)

Export In	Product	Destination	No. of Documents Types	Copies
(b) Import Process				
Import In	Product	Origin	No. of Documents Types	Copies
India	Rubber tyres	Sri Lanka	9	17
China	Fabrics	Japan	16	37
	Auto parts	Japan	16	37
Thailand	Electronics	China	44	54

Source: ARTNeT country studies.

Unlike the number of documents for exports, the number of documents for imports appears to vary significantly across the different countries studied. The number of copies of documents required for imports also varies between countries, as reported in Table 6.

In general, the number of documents required at the various stages of export processes exceeds that required for imports – by about 25 per cent, on average. But in some cases, the number of documents required for imports is also very high. As noted above, the study found that 44 different types of documents are required to be prepared for the import of electronic devices into Thailand from China (see Annex 3). This high number of documents suggests that there is scope for simplification of documentary requirements and alignment with international standards in both exports and imports. At the same time, although a large number of documents are required for the import of electronic goods into Thailand, import processing time is lowest for this country (see Table 4). This suggests that what matters is not the number of documents per se, but rather their nature (electronic vs. paper) and the procedures involved in their preparation and submission.

### *Electronic submission of documents*

Application of modern information and communications technology (ICT) to trade processes has been recognized as an important component of national and regional trade facilitation strategies (ESCAP, 2010). The findings of the country studies indicated that in many countries export and import documents are still not being submitted and/or processed electronically, except for the customs declaration form. Exporters and importers (or their agents) can generally submit the customs declaration form online, although often a paper version also needs to be submitted at some point during the process. This was the case in Sri Lanka at the time the analysis was conducted, although this requirement was subsequently changed.

Among the developing countries studied, Thailand was found to be the country that had the most electronic trade procedures. Similarly, in India the documents required for exports and imports used to be handled manually only a few years back, but today most processes are handled electronically. Application of ICT in managing trade processes in India has gained popularity since the exporters and importers have found it increasingly beneficial (see Table 7). Likewise, scope was found for the application of ICT in trade process management in the least developed countries, including in Bangladesh.

**Table 7. Indian export of fabric to Bangladesh – Processes and submission of documents**

No.	Process	Submission of Documents
1	Buy	Electronic and manual
2	Obtain export permit	Electronic
3	Contract registration and inspection	Electronic and manual
4	Excise inspection	Manual
5	Obtain cargo insurance	Electronic
6	Arrange pre-shipment inspection	Manual
7	Obtain certificate of origin	Electronic and manual
8	Obtain SAFTA certificate	Electronic and manual
9	Submit customs declaration	Electronic
10	Arrange transport for loading	Manual
11	Transfer to LCS	Manual
12	Parking of goods	Manual
13	Customs clearance	Electronic and manual
14	Send the goods to importer's warehouse	Manual
15	Pay	Electronic

Source: ARTNeT Working Paper 95.

Similar trends have been noticed in other countries. In China, for example, to arrange an inspection by the local Entry-Exit Inspection and Quarantine Bureau (Commercial Inspection Bureau), companies need to submit eight documents electronically; following which an inspection schedule is confirmed. Among the documents are the customs declaration form and the application for an export or import permit. The forms can be downloaded online and completed by the company (or the customs broker, based on information provided by the company). The approval of the customs declaration form is also done online. Similar procedures have been implemented in India and Sri Lanka. Cargo insurance and payment are managed electronically in many of the countries included in this study, namely China, India and Thailand. Going one step further, Thai traders are using specialized ICT applications not only for submission of customs and other regulatory documents but

also to manage other vital components of trade processes, such as arrangement of transport or vessel berthing times and loading and unloading of cargoes from vessel.

### 3. Direct costs of the export and import processes

The study found that ports and terminal handling charges and inland haulage costs are the highest costs incurred in the export and import processes, whereas regulatory costs and documentation charges are found to be low. Import and export costs vary widely across products and import costs are often (but not always) higher than export costs. For example, the costs of importing rubber tyres (into India) and sugar (into Bangladesh) exceed those of exports, but the costs of exporting fabric (from India) are found to be higher than the costs of importing. Interestingly, costs reported in the ARTNeT product-specific case studies were found to be significantly lower than those reported in the World Bank's Doing Business Database (DBD).<sup>20</sup>

It is worth noting that traders in several countries expressed that they were particularly concerned about international shipping costs as they significantly exceeded the costs involved in completing all procedures necessary to move goods to or from the seaport. For example, the cost of transporting a container of electronic devices from Thailand to China (by sea) was found to be 1.75 times the total of other export process costs. In addition, the prices charged for shipping costs seem to be somewhat unpredictable, with local shipping agents and freight forwarders in some countries reportedly charging according to product value rather than according to the actual cost of shipping.

Direct costs of trade in cotton yarn, rubber tyres and sugar are presented in Tables 8, 9 and 10, respectively. These tables provide a detailed breakdown of the costs incurred in the export and import processes for each product. The costs shown do not include international shipping costs and tariff (customs) duties, however, nor do they include unofficial payments or costs associated with loss of opportunities (e.g. costs incurred due to delays and subsequent waiting time). The export and import costs of the World Bank's Doing Business Database are also shown in the table, for reference, as they also exclude the above-mentioned cost components.

---

<sup>20</sup> Export and import times and costs in the World Bank's Doing Business Report are based on trade in general, whereas the country studies were product specific. Thus, there are differences in trade cost calculations even though both calculations follow same definition.

**Table 8. Costs of trade in cotton yarn from India to Bangladesh**

<b>Steps</b>	<b>Procedures</b>	<b>Average Cost in United States dollars*</b>
1	Obtain export permit	46.74
2	Contract registration and inspection	2.72
3	Excise inspection	5.43
4	Obtain cargo insurance	222.83
5	Arrange pre-shipment inspection	24.46
6	Obtain certificate of origin	10.87
7	Obtain SAFTA certificate	21.74
8	Submit customs declaration online	18.48
9	Arrange transport for loading	14.13
10	Transfer to LCS (inland transportation charge)	154.35
11	Parking of goods	9.78
12	Customs clearance	–
13	Send the goods to importer's warehouse	10.87
	<b>Export process cost in India</b>	<b>542.39 (945.00)</b>
14	Assembling and preparing documents	150.00
15	L/C Cost	10.00
16	Customs clearance	15.00
17	Ports and Terminal handling costs	120.00
18	Inland transportation and handling costs	120.00
	<b>Import process cost in Bangladesh</b>	<b>415.00 (1 375.00)</b>
	<b>Total trade process cost</b>	<b>957.39</b>

*Source:* Calculated based on ARTNeT Working Papers 93 and 95.

*Notes:* Import tariffs and international shipping costs are excluded.

\*Per TEU. Data in parentheses represents Doing Business Data of World Bank for export (import) of a standard container.



**Table 9. Costs of trade in rubber tyres from Sri Lanka to India**

<b>Steps</b>	<b>Procedures</b>	<b>Average Cost in United States dollars*</b>
1	Assembling and preparing documents	33.00
2	L/C Cost	25.00
3	Customs clearance	21.00
4	Ports and Terminal handling costs	70.00
5	Inland transportation and handling costs	88.00
	<b>Export process cost in Sri Lanka</b>	<b>237.00 (715.00)</b>
6	Obtain IEC code	21.50
7	Vessel information and filling IGM	9.00
8	Allocation of berth	12.50
9	Filing Bill of entry & other import papers	72.50
10	Filing Delivery Order	9.00
11	Immigration	–
12	Plant quarantine	–
13	Unloading of goods from vessel	80.00
14	Verification of cargo	45.00
15	Send the goods to importer's warehouse	110.00
	<b>Import process cost in India</b>	<b>359.50 (960.00)</b>
	<b>Total trade process cost</b>	<b>596.50 (1 675.00)</b>

*Source:* Calculated based on ARTNeT Working Papers 91 and 95.

*Notes:* Import tariffs and international shipping costs are excluded.

\*Per TEU. Data in parentheses represents Doing Business Data of World Bank for export (import) of a standard container.

**Table 10. Costs of trade in sugar from Thailand to Bangladesh**

Steps	Procedures	Average Cost in United States dollars**
1	Buy	
2	Request for export permit	6.90
3	Request for cargo movement permit	6.90
4	Prepare documents for insurance	6.90
5	Prepare documents for cargo movement	120.69
6	Prepare documents for customs declaration	–
7	Receive empty container	–
8	Load cargo into the container	172.41
9	Declare to Customs	–
10	Customs clearance	–
11	Waiting time before next ship departs	–
12	Loading containers onto the vessel	89.66
13	Prepare documents for importer	51.72
14	Report of sugar export	17.24
15	Payment Process	–
	<b>Export process cost in Thailand</b>	<b>472.41 (625.00)</b>
16	Assembling and preparing documents	50.00
17	L/C Cost	10.00
18	Customs clearance	15.00
19	Ports and Terminal handling costs	200.00
20	Inland transportation and handling costs	250.00
	<b>Import process cost in Bangladesh</b>	<b>525.00 (1 375.00)</b>
	<b>Total trade process cost</b>	<b>997.41</b>

Source: Calculated based on ARTNeT Working Papers 93 and 95.

Notes: Import tariffs and international shipping costs are excluded.

\*Per TEU. Data in parentheses represents World Bank Doing Business data for the export or import of a standard container.

#### 4. Export and import process time: import-export time procedure charts

The time it takes to complete export and import procedures, and any delays associated with these procedures, have been identified as highly significant factors affecting a trading firm's competitiveness and profitability (Djankov et al., 2010). Lengthy procedures create significant indirect costs that often far exceed the direct costs of trade transactions, including, in extreme cases, the complete loss of a shipment value when that shipment contains perishable or time-sensitive goods. Lengthy procedures are also usually associated with increased uncertainties regarding time of delivery, reducing opportunities for firms to take part in international production networks where just-in-time deliveries are essential.

One of the key outputs of business process analyses are time-procedure charts, which provide a graphic summary of the steps involved in a process, the time relationships between the steps (i.e. whether they take place in parallel or sequentially), and the time it takes to complete them as well as the overall process. Based on the completed ARTNeT country case studies, six time-procedure charts have been prepared, each showing both the export process (in the country of origin) and the import process (in the country of destination) for a given product (see Figures 3 to 8).<sup>21</sup> International shipping time has also been added in order to get a comprehensive picture of the time it takes to complete an entire international trade transaction.<sup>22</sup>

The figures show that the complete trade processes range in length from less than 24 days for the export-import of electronic devices from China to Thailand, to 41 days for export-import of tea from Sri Lanka to Japan (including payment to the exporter, which takes place 7 days after arrival of goods in the importer warehouse) or 48 days for the export of garments from China to Japan (including payment to the exporter 15 days after the arrival of the goods). International shipping time is found to be a significant, but often not the largest, component of total trade transaction time, with payment delays and the time needed for various inspections (e.g. export-import of rubber tyres from Sri Lanka to India) and obtaining of export permits (e.g. export of electronic devices from China) taking up a large share of total time. Time for arranging inland transport from factory to port is also sometimes very high: 4.5 days in the case of China, in part due to the scarcity of empty containers for shipment in that country.

Other observations that can be made based on the charts are as follows.

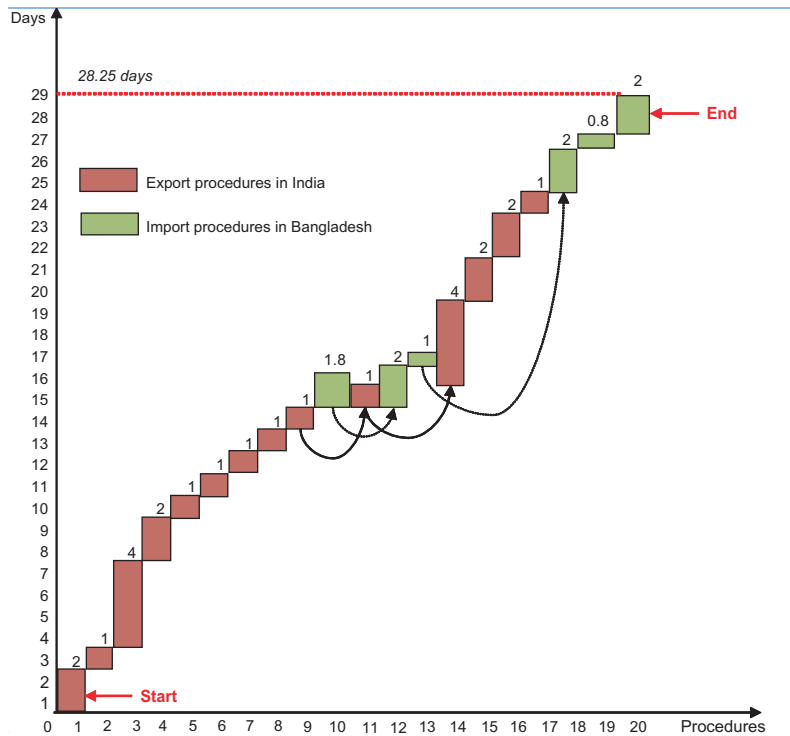
- Procedural bottlenecks often seem to be more on the export side rather than on the import side. For example, it takes nearly 28 days to complete a trade transaction for fabric, from signing the contract to getting the payment, where an Indian firm is an exporter and a Bangladeshi firm is the importer. More than 80 per cent of that time (24 days) is spent on procedures in the exporting country. Contract registration and inspection involving the exporting firm and the government (textile ministry) takes 4 days, on average, as does inland haulage of goods to the land customs station (LCS). However, the study also found that the time spent at the land border (from parking of vehicle to transfer of goods to importer's warehouse) also amounts to between 7 to 8 days, suggesting that improvements may be needed in the procedures on both sides of the land border.

---

<sup>21</sup> Post-shipment payment time data when not available from importer's side was covered by the corresponding exporter's data.

<sup>22</sup> This data was obtained from the shipping time databases of some noted liner companies dealing with trade in the region.

Figure 3. Time Procedure Chart: Trade in cotton yarn from India to Bangladesh



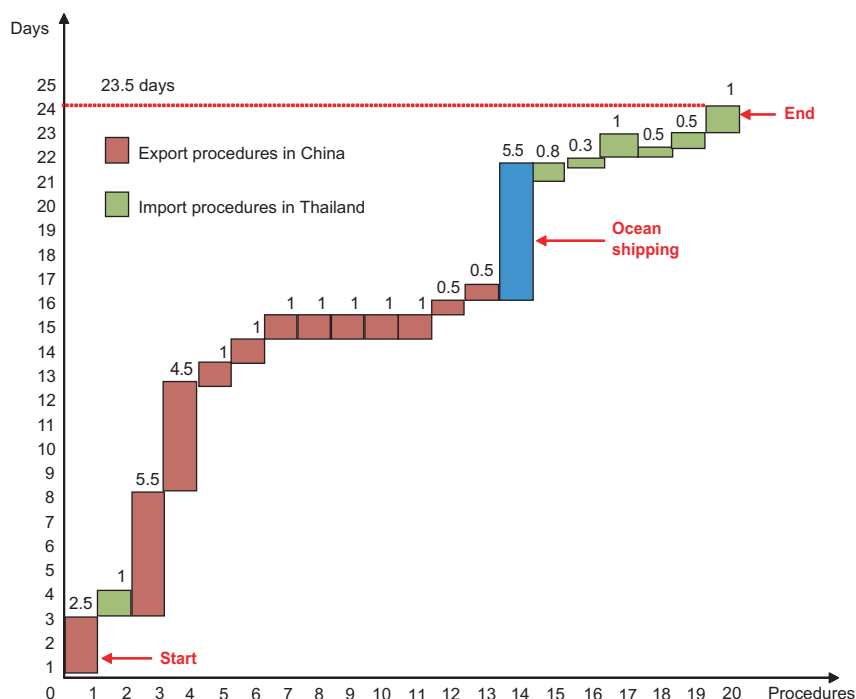
No.	Procedures	Days	No.	Procedures	Days
1	Buy	2.00	12	Prepare other import documents	2.00
2	Obtain export permit	1.00	13	Provide customs declaration	0.50
3	Contract registration and inspection	4.00	14	Transfer to LCS	4.00
4	Excise inspection	2.00	15	Parking of goods	2.00
5	Obtain cargo insurance	1.00	16	Customs clearance	2.00
6	Arrange pre-shipment inspection	1.00	17	Send the goods to importer's warehouse	1.00
7	Obtain certificate of origin	1.00	18	Clear goods through customs	2.00
8	Obtain SAFTA certificate	1.00	19	Transport to importer's premise	0.75
9	Submit customs declaration online	1.00	20	Pay	1.50*
10	Collect and endorse documents for import	1.75	<b>Total</b>		<b>28.50**</b>
11	Arrange transport for loading	1.00			

Source: ARTNeT Working Papers 93 and 95.

\*According to Indian exporters, it takes about 8 days to get payment from Bangladesh.

\*\* Total time becomes 34.75 days if we take 8 days to receive payment from Bangladeshi importer.

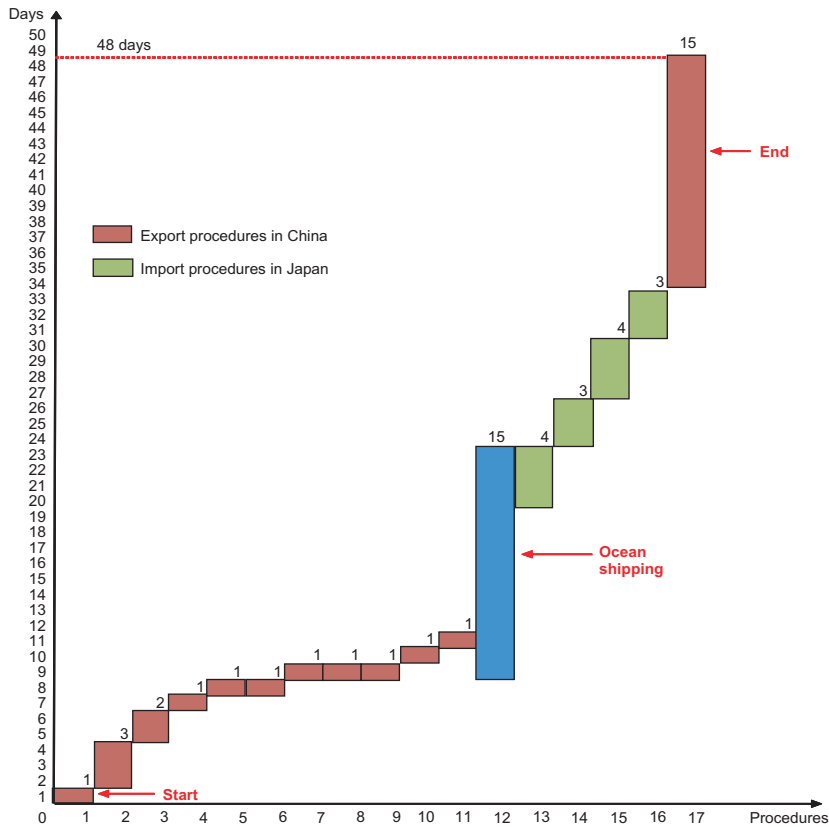
**Figure 4. Time Procedure Chart: Trade in electronic devices from China to Thailand**



No.	Procedures	Days	No.	Procedures	Days
1	Buy	2.50	12	Obtain cargo insurance	0.50
2	Obtain permission for raw materials release	1.00	13	Prepare documents for payment	0.50
3	Obtain export permit	5.50	14	Ocean shipping	5.50
4	Arrange transport	4.50	15	Request for vessel berthing	0.75
5	Arrange inspection	1.00	16	Unload goods from vessel	0.25
6	Prepare customs declaration	1.00	17	Declare goods to Customs	1.00
7	Collect empty containers from yard	1.00	18	Arrange goods for inspection	0.50
8	Stuff a container	1.00	19	Inspect and release goods	0.50
9	Transfer to port of departure	1.00	20	Pay	1.00
10	Clear goods through customs	1.00	<b>Total</b>		<b>23.50</b>
11	Handle containers and stow on vessel	1.00			

Source: ARTNeT Working Papers 88 and 103.

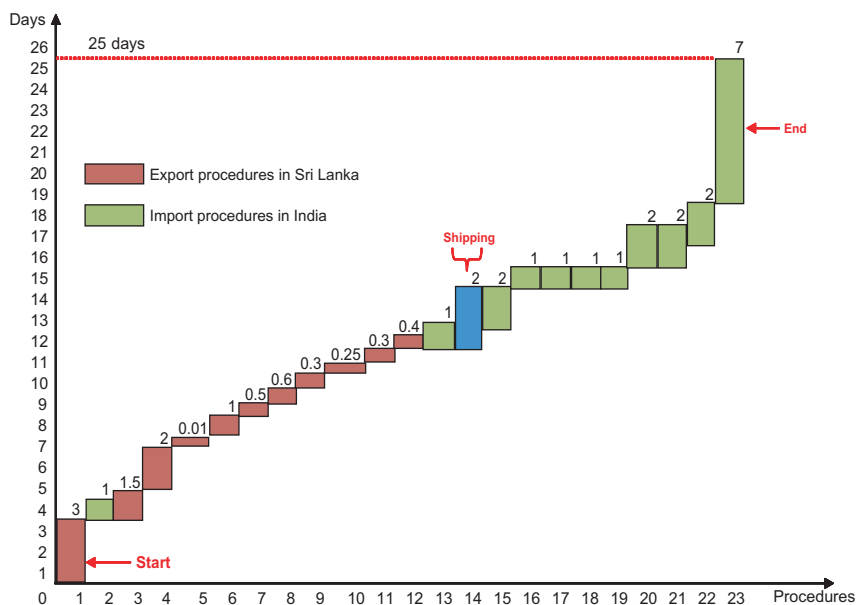
Figure 5. Time Procedure Chart: Trade in garments from China to Japan



No.	Procedures	Days	No.	Procedures	Days
1	Buy	1	10	Prepare documents for importer	1
2	Arrange transport	3	11	Prepare documents for payment	1
3	Arrange Inspection	2	12	Ocean shipping	15
4	Obtain cargo insurance	1	13	Pre-arrival documentation	4
5	Collect empty containers from yard	1	14	Port terminal handling	5
6	Stuff containers	1	15	Customs and inspection	4
7	Transfer to port of departure	1	16	Inland transport to/from warehouse	2
8	Clear goods through customs	1	17	Pay	15
9	Handle containers and stow on vessel	1	<b>Total</b>		<b>48</b>

Source: ARTNeT Working Papers 91 and 101.

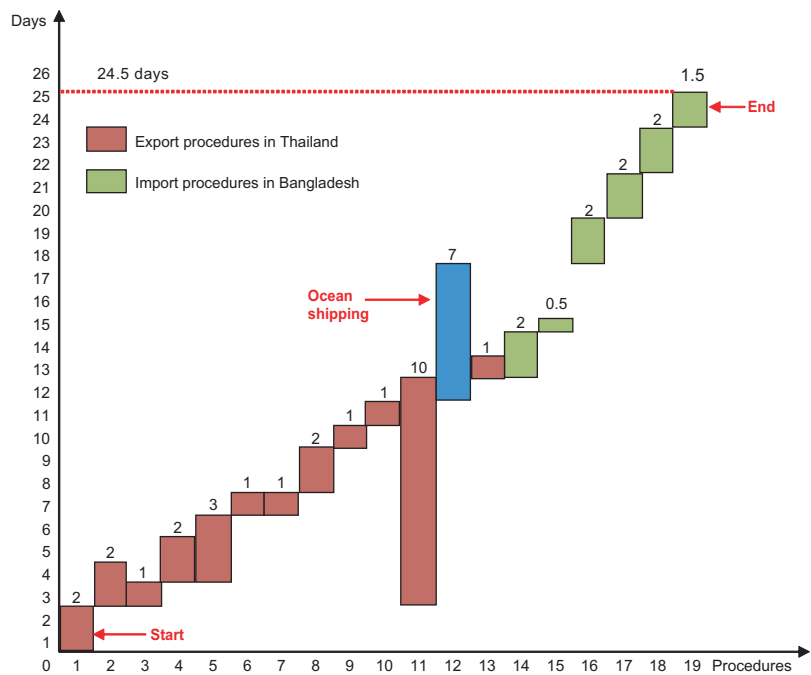
**Figure 6. Time Procedure Chart: Trade in rubber tires from Sri Lanka to India**



No.	Procedures	Days	No.	Procedures	Days
1	Buy – conclude sales and contract terms	3.00	13	Vessel information and filling IGM	1.00
2	Obtain IEC code	1.00	14	Shipping	2.00
3	Obtain bank related documents	1.50	15	Allocation of berth	2.00
4	Prepare all export documents	2.00	16	Filing bill of entry & other import papers	1.00
5	Lodge CUSDEC online	0.01	17	Filing Delivery Order	1.00
6	Pass CUSDEC manually	1.00	18	Immigration	1.00
7	Obtain cargo insurance	0.50	19	Plant quarantine	1.00
8	Arrange transport and load on truck	0.60	20	Unloading of goods from vessel	2.00
9	Transport to port of departure	0.25	21	Verification of cargo	2.00
10	Clear goods through customs at seaport	0.30	22	Send the goods to importer's warehouse	2.00
11	Port and terminal handling activities	0.30	23	Pay to exporter	7.00
12	Loading container onto vessel	0.40			
				<b>Total days</b>	<b>25.00</b>

Source: ARTNeT Working Papers 91 and 95.

Figure 7. Time Procedure Chart: Trade in sugar from Thailand to Bangladesh



No.	Procedures	Days	No.	Procedures	Days
1	Buy	2.00	11	Prepare documents required by importer	10.00
2	Obtain export permit	2.00	12	Ocean shipping	6.00
3	Obtain goods movement permit	1.00	13	Verify accuracy/authenticity of exported cargo	1.00
4	Obtain cargo insurance	2.00	14	Collect and endorse documents for import	2.00
5	Arrange transport	3.00	15	Provide customs declaration online	0.50
6	Provide customs declaration	1.00	16	Handling cargo at port	2.00
7	Collect empty container from yard	1.00	17	Clear goods through customs	2.00
8	Stuff a container	2.00	18	Transfer goods to importer's premise	2.00
9	Clear goods through customs	1.00	19	Pay	1.50*
10	Handle container at terminal and stow on vessel	1.00		<b>Total</b>	<b>24.50*</b>

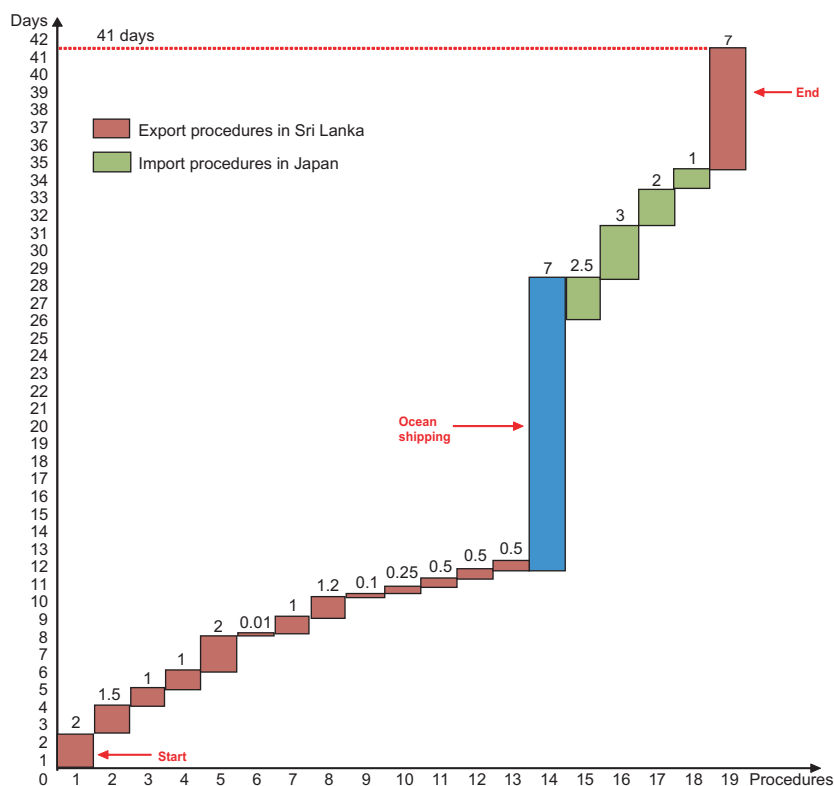
Source: ARTNeT Working Papers 93 and 103.

\*According to Thailand exporters, it takes one day to get payment from Bangladesh.

\*\* Total time becomes 23.50 days if we take one day to receive payment from the importer in Bangladesh.



**Figure 8. Time Procedure Chart: Trade in tea from Sri Lanka to Japan**



No.	Procedures	Days	No.	Procedures	Days
1	Buy	2.00	11	Port and terminal activities	0.50
2	Obtain bank-related documents	1.50	12	Loading container into vessel	0.50
3	Obtain export permit	1.00	13	Prepare documents required by importer	0.50
4	Obtain cargo insurance	1.00	14	Ocean shipping	17.00
5	Prepare all other export documents	2.00	15	Pre-arrival documentation	2.50
6	Lodge the CUSDEC online	0.01	16	Port terminal handling	3.00
7	Pass the CUSDEC manually	1.00	17	Customs and inspection	2.00
8	Arrange transport and load on truck	1.20	18	Inland transport to/from warehouse	1.00
9	Transport to the port of departure	0.10	19	Pay	7.00
10	Clear goods through customs at seaport	0.25	<b>Total</b>		<b>41.00</b>

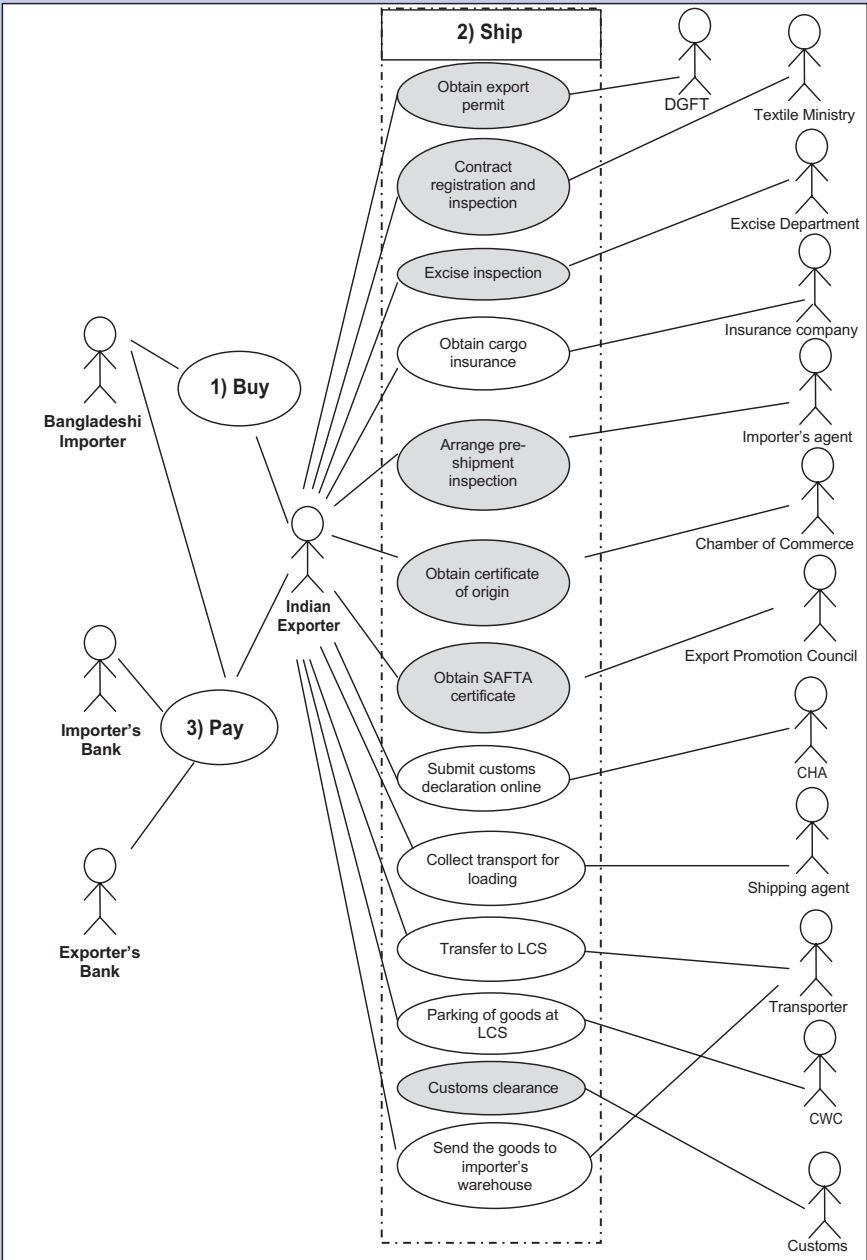
Source: ARTNeT Working Papers 91 and 101.

- Physical inspection by government authorities before and at the time of export or import also appears to create bottlenecks. In all the countries studied, government inspector(s) often carry out physical inspection before an export or import permit is issued. Sometimes multiple inspections are required, by various ministries. According to the UML case diagram for Indian exports to Bangladesh (Box 3), half of the process (7 out of 13 steps) for exporting Indian fabric to Bangladesh involves physical (or verbal) inspections.<sup>23</sup> In the case of China, pre-shipment cargo inspection is often compulsory. For the export of garments, Chinese exporters must request an inspection of the goods by the local Entry-Exit Inspection and Quarantine Bureau (Commercial Inspection Bureau). The inspection focuses on various issues, including the quality, safety and toxicity of the goods. No less than eight documents are needed to be provided to get an approval of the authority. While inspections often make trade safer and more secure, excessive inspections by government authorities impede trade. Physical inspections, by multiplying face to face contact between control officers and traders (or their representatives), also potentially provide opportunities for informal payments and rent seeking, increasing the overall cost of trade and the uncertainties associated with each transaction. Implementation of risk management systems and authorized economic operator programmes may help minimize the need for inspections.
- Regulatory procedures are not the only procedures that take considerable time. For example, the arrangement of containers takes a long time in some countries, such as in Thailand (3 days). While reducing the time it takes to get an export permit is the responsibility of the exporting country government, increasing the supply of containers depends on the private sector, viz. transporter or shipping agency. Therefore, while streamlining regulatory procedures and related documentation is important, broader policy reforms targeting the service sectors supporting trade transactions (transport, logistics, financial) may also be needed.

---

<sup>23</sup> Refer to Box 2 and UNNExT, UNESCAP and UNECE (2009) for an introduction to UML Case Diagrams. See also the UML Case Diagram of Chinese export to Thailand in Annex 4.

**Box 3. UML Case Diagram: Export of fabric from India to Bangladesh**



Source: ARTNet Working Paper 95.

## 5. Export and import time: cross-country analysis

As discussed earlier, the length of time required to complete export and import procedures reported in the various ARTNeT studies varies between countries (see Tables 3 and 4). While this is in large part due to differences in products and partner countries, there are also slight differences in scope of procedures and in methods of payment across studies and countries. These differences make cross-country comparisons difficult without adjustments. Thus, export and import times were re-calculated using the World Bank's DBD approach. For exports, this means measuring from the time of the signature of contract to the time the products are loaded on the ship at the nearest port.<sup>24</sup> Under this approach, therefore, the time required to complete export and import procedures excludes the time for contract negotiation and signature (Buy process) and payment delays (Pay process), as shown in Figure 9 and Figure 10. Also, in line with the DBD approach, the various steps involved in the export and import processes identified by the ARTNeT researchers in their studies are grouped into four standard components: (1) document preparation, (2) inland carriage and handling, (3) customs and (4) terminal handling. It should be noted that the "customs" component actually includes health, quarantine and technical control (and any physical inspections) as well, some of which may be under the responsibilities of agencies other than the customs office.

As illustrated in Figure 9, the time required for preparation of documentation is generally the main component of export and import time. However, the time required for inland haulage (e.g. export of vegetable ghee from Nepal), terminal handling (e.g. export of automobile parts from Thailand) and inland customs and inspection (e.g. export of automobile parts from Japan) are also very significant in determining the overall time required for the completion of export procedures. Document preparation is also typically the largest time component in the import process, except in the case of Nepal's import of fabric from India (Figure 10), for which inland transportation and the customs component are larger.

Some brief observations on each of the trade time components follow.

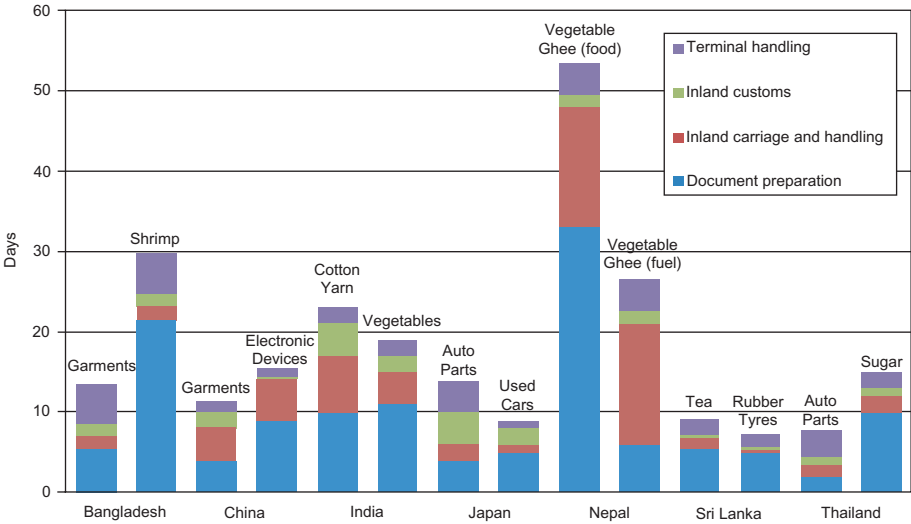
### ***Document preparation time***

The time required for the completion of documentation for the export of shrimp from Bangladesh (to Japan) and vegetable ghee from Nepal (to India) is 22 and 33 days, respectively. In contrast, the document preparation for export of automobile parts from Thailand to India takes just 2 days, which is found to be the lowest time among the countries considered in this study.

---

<sup>24</sup> In the case of landlocked countries or of export or import processes involving land border-crossings, export and import times were adjusted to include travel time to the nearest seaport. Details are available in Annex 5.

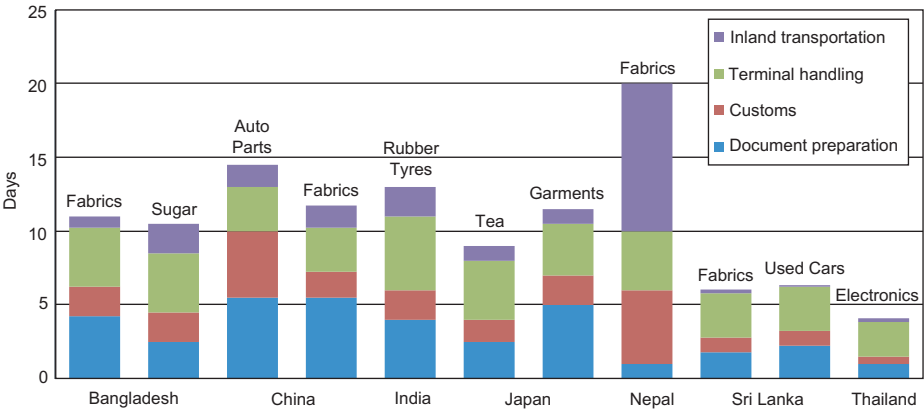
Figure 9. Export time for selected products and countries in Asia (adjusted)\*



Source: Authors' calculations based on ARTNeT Working Papers.

Notes: \*Adjusted to the DBD approach, i.e., time for moving goods from factory to deck of sea vessel. See Annex 5 for details on the method of adjustment.

Figure 10. Import time for selected products and countries in Asia (adjusted)\*



Source: Authors' calculations based on ARTNeT Working Papers.

Notes: \*Adjusted to the DBD approach i.e., time for moving goods from deck of sea vessel to importer warehouse. See Annex 5 for details on the method of adjustment.

Document preparation for importing generally does not take as much time as for exporting. For example, document preparation for the import of electronic devices into Thailand from China or the import of fabric by Nepal from India takes only one day. The only exceptions are the cases of India's import of rubber tyres from Sri Lanka and China's import of fabric from Japan, where document preparation takes almost a week. In contrast, document preparation for import of electronic devices into Thailand from China or import of fabrics by Nepal from India just takes one day. Importantly, document preparation for imports is often done before the arrival of the goods, so usually takes place in parallel with ocean shipping, and therefore does not affect the overall trade transaction time (e.g. in the case of imports into Japan, as shown in Figure 8).

### ***Inland carriage and handling time***

Inland carriage and handling time does not account for a large share of the export time, except in the cases of landlocked countries (Nepal and Afghanistan). In the case of imports, inland transportation takes between 2 days to 1/4<sup>th</sup> of a day across countries, generally accounting for less than 20 per cent of total import time.

While the location of the importing and exporting firms in relation to the nearest seaport (or from each other) is a crucial factor in inland transportation time, Governments may reduce overall inland carriage and handling by enhancing the transport infrastructure within their own country (as well as transit countries in the case of a landlocked country like Nepal), promoting the development of logistics services and reducing the number of police and other checkpoints en route to the port or the border. Establishing special economic zones near seaports (or near the border) could also help in this regard.

### ***Customs clearance time (including quarantine, health and technical controls)***

For exports from India to Bangladesh, customs and other control agencies take 4 days to clear an export consignment. In contrast, it takes one quarter of a day to 2 days to clear an export consignment in the other developing countries examined in this study. For imports, consignments are generally cleared by customs within the time frame of between half a day to 2 days.

As noted earlier, however, clearance and release of goods at the port (or the border) is not solely dependent on the customs authority, as various other agencies may also be involved in the control of the goods. Therefore, it is necessary to analyse what other agencies are involved and what causes inefficiencies and delays at border points.

### ***Export and import time – terminal handling***

The time required to handle shipments at port terminals is often lengthy, thus increasing overall export time. Therefore, enhancing port efficiency is essential to trade facilitation (Wilson et al., 2003). Handling of export cargo at the port terminal in Bangladesh requires about 5 days, which is the lengthiest time among all the export processes examined

in this study. The time required for terminal handling of India's imports of rubber tyres from Sri Lanka and Japan's imports of tea from Sri Lanka are also found to take about 3 days. In contrast, little time (less than a day) is required for the handling of imports of electronic devices and auto parts at the ports in China and Thailand. These disparities across countries and products deserve deeper analysis, as they may be due in part to the difficulties experienced by the ARTNeT researchers in obtaining accurate time estimates.<sup>25</sup>

Given that the time estimates in the Doing Business Database are for the import or export of non-sensitive products that do not require any special controls or inspections, one would expect the DBD to have lower estimates of import and export times. On the contrary, however, it was found that DBD import and export times are generally higher than those obtained by the ARTNeT researchers (after adjustments to match the DBD approach, as explained earlier). The export and import costs in the DBD were also found to be higher, in general, than those reported in the ARTNeT studies.<sup>26</sup> Table 11 shows the export and import times obtained through the detailed product and partner country-specific case studies and those available in the DBD database.

The large differences between the ARTNeT studies and the DBD in terms of the time required for the completion of importing procedures are explained in large part by differences in "document preparation" time. This time ranges from 8 days (for Thailand) to 15 days (for Bangladesh) in the DBD dataset – while it rarely exceeds 5 days in the ARTNeT studies. Looking further at the disaggregated data, the DBD estimates show that the time needed to "obtain bank-related documents" – one of the two components of "document preparation" in the DBD – ranges from 4 days (in India) to 8 days (in China). While that specific component was not singled out for time measurement in the ARTNeT studies, these DBD estimates are not supported by the results of the import process analyses conducted by ARTNeT, even when the entire PAY process is considered – see Annex 5 (b).

---

<sup>25</sup> Terminal handling includes the following two sub-categories: (1) unloading of containers from vessels and (2) parking the containers in designated container storage areas. It is not clear from the country cases whether these two components were systematically included in the time estimates. It is worth noting that DBD port terminal handling estimates include "vessel waiting time to enter the berth" in the case of imports, and "waiting time before the next vessel departs" in the case of exports, two components that the ARTNeT researchers were not able to include in their analysis.

<sup>26</sup> The cost of exports from Bangladesh was found to be slightly higher than that reported in the DBD. However, wide variations in the costs of L/C from shipment to shipment make it difficult to estimate direct costs accurately, according to the ARTNeT study.

**Table 11. Trading across borders: Comparisons with the World Bank Doing Business Database (DBD)\*, 2011**

	Time to export (days)		Cost to export (USD per container)		Time to import (days)		Cost to import (USD per container)	
	DBD	ARTNeT	DBD	ARTNeT	DBD	ARTNeT	DBD	ARTNeT
Bangladesh <sup>1</sup>	25	14	920	935	31	11	1 305	[415]
China <sup>2</sup>	21	12	500	367	24	15	545	403
India <sup>3</sup>	17	23	1 055	532	20	13	1 025	359
Japan <sup>4</sup>	10	14	880	369	11	10	970	410
Nepal <sup>5</sup>	41	40	1 960	[1 067]	35	20	2 095	[320]
Sri Lanka <sup>6</sup>	21	9	715	435	19	6	745	677
Thailand <sup>7</sup>	14	8	625	509	13	4	795	300
Average	21.29	17.14	950.71	602.00	21.86	11.29	1 068.57	412.00
CV	0.47	0.67	0.51	0.49	0.4	0.6	0.48	0.3

*Sources:* Authors' calculations based on ARTNeT Working Papers and World Bank DBD (2010).

*Notes:* See Annex 5 for details on adjusted ARTNeT Data; Bracketed numbers [ ] are not comparable to those of DBD since they do not reflect the cost of moving goods to the nearest port (only to a land border); 1. Export of garments and import of fabrics; 2. Export of garments and import of auto parts; 3. Export of fabrics and import of rubber tyres; 4. Export of automobile parts and import of tea; 5. Export of vegetable ghee (average time) and import of fabrics; 6. Export of tea and import of fabrics; 7. Export of auto parts and import of electronic products.

\* DBD data shown is from the Doing Business Report 2011, which presents data collected in 2010 (the same year ARTNeT data was collected).

## 6. Beyond trade time and cost averages: Other findings

The trade process analyses conducted in each country provide many insights into import and export procedures beyond the import and export time averages summarized above. The studies provide information on how procedures vary across products, routes and firms, as well as in terms of timeliness. The most relevant findings are highlighted below.

Trade processes and their efficiency vary significantly depending on the route or mode of transport selected. For example, in the Bangladesh study, the time required for the export of ready-made garments to India by sea is compared to the time required for the export by land. Export time (excluding international transport) was found to be longer by sea (17 days) than by land (15 days), mainly due the extra time involved in arranging shipment by sea and handling of the container at the port. At the same time, the customs clearance process at the Bangladesh border was found to take twice as much time as the clearance process at the port. Similar findings are reported in other studies, many pointing out that the time and cost required for importing and exporting a particular product will vary depending on the port through which it is shipped and the distance of the firm to the port.



While these findings are not surprising, they make it clear that cross-country comparisons in terms of trade efficiency must be made with caution as results will be very much influenced by the underlying assumptions.<sup>27</sup> They also suggest that evaluating the trade facilitation performance of a country requires that much more detailed assessments be conducted, as reform priorities and procedural bottlenecks may be different across routes and modes of transport for a given country. In that context, process analysis and improvements at the corridor level may indeed be preferable.

The study also provides evidence of large variations in trade procedures across products, with agricultural and food products unsurprisingly subject to the most complex procedures and delays. The need to sample and examine products, a step generally involving laboratory testing and the issuing of a quality certificate (typically required for food products), is found to increase export time by at least one third, as compared to most manufactured goods (for which this procedure is optional or non-existent). For example, the procedure for testing vegetable ghee to India was found to take up to 15 days, while that for shrimp exports from Bangladesh to Japan takes 18 days – or nearly half of the overall export time. Again, this result highlights the need to assess trade facilitation needs and priorities – and possibly develop solutions – at the industry or product level whenever possible.<sup>28</sup>

Interestingly, although product testing is identified as a key issue, it is a procedure linked to bilateral preferential trade arrangements. For example, the procedure related to the allocation of the quota for the export of vegetable ghee from Nepal to India is identified as a key bottleneck in the export process for that product. Likewise, procedures related to the issuing of certificates of origin have been identified as sources of inefficiencies in several countries (see Box 4). Given that private sector associations play a key role in the above-mentioned procedures, this finding emphasizes the necessity for governments to ensure that these associations provide efficient and non-discriminatory service to all traders. It also highlights the link between trade policy and negotiations and trade facilitation, as more agreements and rules involving differential treatments of trade partners result in additional procedures and documentation that may ultimately negate the benefits associated with the preferences given.

None of the trade process analyses conducted as part of this regional study leadsto the conclusion that import and export processes do not differ significantly between large companies and small and medium-sized enterprises (SMEs). The Sri Lanka study, for example, found that the cost and time of trade processes is often higher for SMEs in relative terms, as they have to commit relatively more of their limited resources to handling them (hence the need to continuously streamline procedures to make international trade

<sup>27</sup> For example, even assuming that a firm is located near the capital city when calculating trade time automatically puts countries with capital cities located at some distance from a seaport at a disadvantage, although in reality the relevant firms may be operating near that seaport, being very much aware of the need to cut time and cost.

<sup>28</sup> See ESCAP (2011c), for a more detailed introduction to agricultural trade facilitation.

more inclusive) but there were no significant differences in the time and cost of exporting/importing across firm size.<sup>29</sup>

The study found, however, that processes vary between Board of Investment (BOI) member companies and non-members in Sri Lanka, as outlined in Table 12. The ability of BOI companies to submit a customs declaration form (CUSDEC), make the payments and examine the cargo within the free trade zone (FTZ), provides the BOI companies with advantages in terms of time savings and fewer problems, e.g. avoiding long queues and the need to transport the cargo (if selected for examination) to yards outside the ports.<sup>30</sup>

#### **Box 4. Procedure for receiving preferential quota in Nepal**

At the time of the study, Nepal producers were eligible for an allocation of preferential quota for the export of vegetable ghee.<sup>31</sup> The export process analysis conducted as part of the study revealed that the procedure for receiving an allocation of the quota took between seven 7 to 10 days, making it the second-most time-consuming procedure of the entire 40-day Buy-Ship-Pay process of exporting vegetable ghee from Nepal to India- after the product sampling and testing procedure, which took 10 to 15 days.

As per the bilateral trade agreement between India and Nepal, the Government of India sets an annual quota for the import of vegetable ghee from Nepal. The Ministry of Commerce and Supplies (MOCS) of Nepal allocates the quota among exporting firms on the recommendations of the Nepal Vegetable Ghee Producers' Association (NVGPA), the Federation of Nepalese Chambers of Commerce and Industry (FNCCI) and the Nepal-India Chamber of Commerce and Industry (NICCI). Though the Government of India provides an overall quota to the Government of Nepal (GON), there is a system of state-wise quota distribution. Exporters have to consider this factor while planning for exports to different states of India. NICCI maintains records of state-wise export quotas and actual exports by the exporting firm. On that basis, it issues a passbook to the exporting firm. A passbook is a record of the state-wise export quota and the use of this quota by individual export firms. Exporting firms need to obtain a passbook from the NICCI in the process of getting a recommendation for an allocation of the export quota.

In the process of obtaining part of the quota, exporting firms first approach the NVGPA, and after getting recommendation letter from them, they apply to the FNCCI and NICCI for recommendation letters, with their letter from the NVGPA, Industry Registration Certificate, Permanent Account Number (PAN), Registration Certificate and documents showing the

<sup>29</sup> While this is true in absolute terms, the cost and time of trade processes often remains higher for SMEs in relative terms, since they have to commit relatively more of their limited resources to handling them – hence the continuous need to streamline procedures to make international trade more inclusive.

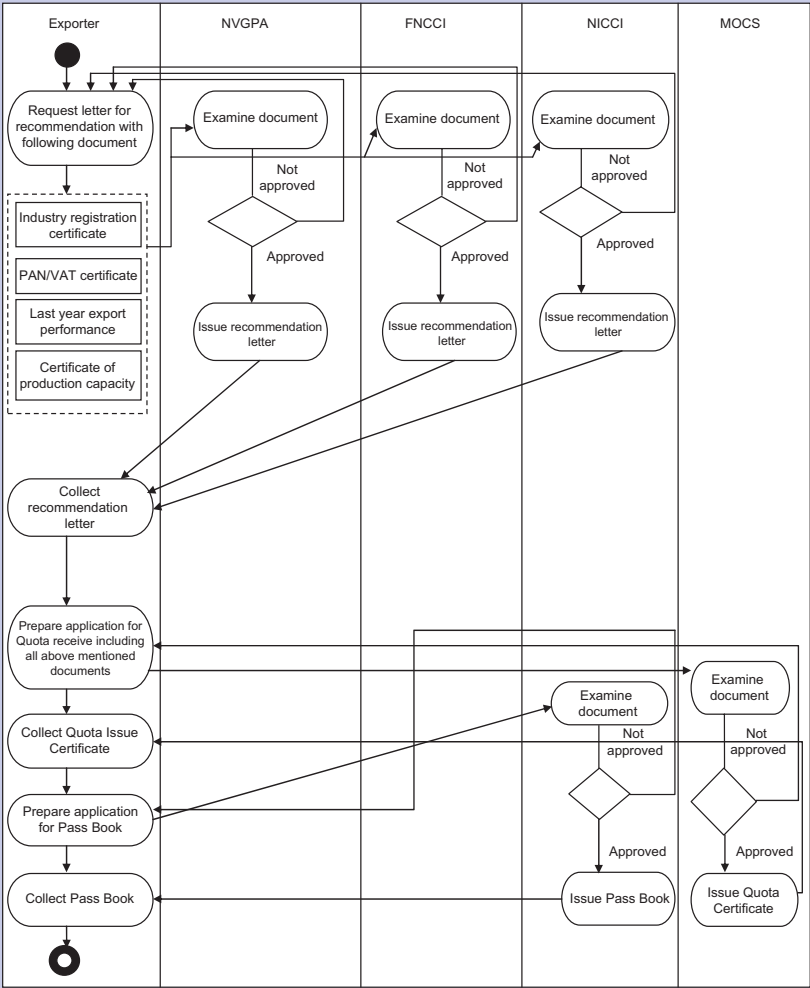
<sup>30</sup> It is worth noting that BOI companies are generally large companies, although size is not necessarily an essential characteristic for BOI membership.

<sup>31</sup> As per the bilateral trade agreement between India and Nepal, the Government of India sets an annual quota for export of vegetable ghee to the government of Nepal (Rajkarnikar, 2010).

production capacity of their business and their export performance in the previous year. After examining the documents, the FNCCI and NICCI issue recommendation letters to the exporting firms. With these recommendation letters and the documents showing their production capacity and their export performance in the previous year, the exporting firms then apply to the MOCS for an allocation of the export quota. After examining the documents, the MOCS issues a quota certificate to the exporting firm.

The UML activity diagram of the quota allocation procedure is provided below.

Annex 5.1.2C: Receive Quota



Source: ARTNet Working Paper No. 89.

Given that most traders (small or large) in the countries studied rely on intermediaries, such as customs brokers or freight forwarders, the differences between small and large traders in terms of time – and possibly cost – of preparing documents and clearing customs may be small. However, the situation may be different in terms of transport and terminal handling procedures, as some studies indicate that the time required for importing differs significantly depending on the volume of goods shipped. For example, importing tea from Sri Lanka to Japan can take between 4 to 14 days longer (not including extra unloading time on arrival in Japan) if the export involves container-sharing.

**Table 12. Main differences of BOI and Non-BOI processes in Sri Lanka**

Process	Activity	Non-BOI Company	BOI Company
Import Process	Import declaration	CUSDEC submitted to Long Room of Customs in Colombo	CUSDEC submitted to BOI Centre in the Free Trade Zone (FTZ)
	Payment of duties and taxes	To bank located near Long Room	Bank counter at the BOI in the FTZ
	Determination of examination level	By Customs	By Customs/BOI Coordination Unit (CBCU)
	Cargo examination	Examination by Customs at Grayline yard	Examination by BOI at the FTZ
Export Process	Export declaration	Submit documents to Customs	Submit documents to BOI
	Cargo examination (when required)	Cargo verification by Customs	Cargo verification by BOI at FTZ

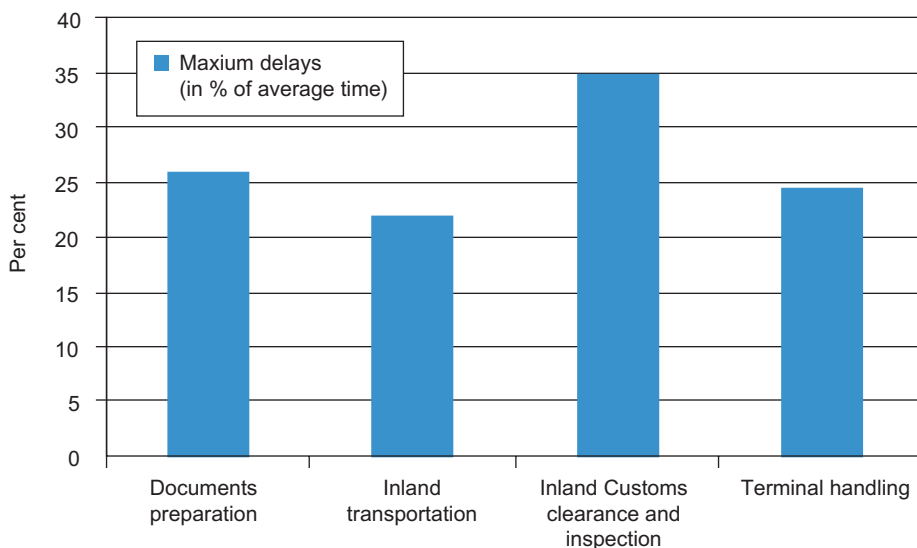
Source: ARTNeT Working Paper 91.

An important dimension of trade facilitation and efficiency is the predictability of the time the export or import process will take. Both the Bangladesh and India case studies provide some insights on this matter, as they report minimum and maximum times along with average times required for various procedures, as part of their process analyses. According to those analyses, maximum delays range from 13 per cent of average time (for export of rubber tyres from Sri Lanka to India) to 43 per cent (for export of garments from Bangladesh to India). See Annex 6.

Looking at procedures within processes, the study found that inland customs clearance is the procedure that seems to be the least predictable, with the potential for a maximum delay of 35 per cent of average customs clearance time (see Figure 11). This is explained by the fact that a shipment may be selected for physical inspection, in which case the clearance process will be delayed. It is worth noting that this is not necessarily due to customs. For example, in the case of exports of auto parts from China, random inspections conducted by the Commodity Inspection Bureau as part of the clearance process may

take between 1 to 5 days to complete, as compared to only 0.5 days when no inspection is conducted.

**Figure 11. Average maximum delays, by type of trade procedures**



Source: Authors' calculations based on ARTNeT Working Papers 93 and 95.

## D. Conclusions and Policy Recommendations

The Asia-Pacific region as a whole has experienced exceptional economic growth over the past two decades, fuelled in large part by exports to high income countries outside the region. Import tariffs fell sharply in these and other countries during that period, making it possible for many developing countries of the region to reap the benefits of globalization. However, as firms in an increasing number of countries compete for a share of the global market, it is essential for governments to find new ways to enhance trade competitiveness. At a time when developed economies face limited growth prospects and possible recessions, facilitating intraregional trade and, more generally, South-South trade, will be particularly important for sustaining growth in the region.

Facilitating trade is about reducing the time and cost of trade transactions, including the risks associated with them. While the trade facilitation performances of individual economies vary greatly, it takes, on average, three times more days to import or export to or from a developing country in the region than it does for trade with a developed country. Also, it often costs more for Asia-Pacific economies to trade with each other than to trade with the USA or Europe. These facts, along with the now well-established finding that benefits from trade facilitation generally exceed those that may be achieved through

further tariff cuts, call for urgent attention to be placed on streamlining trade procedures in the Asia-Pacific region.

In this context, this first regional study of trade procedures is very timely. This study examined the export and import processes in seven countries of the region (Bangladesh, China, India, Japan, Nepal, Thailand and Sri Lanka) by conducting business process analyses of trade procedures for specific products to and from these countries. The procedure analyses covered the entire trade transactions, including the buying, shipping and payment processes. A total of 14 product- and country-specific export processes and 11 import processes were mapped and analysed by a team of ARTNeT researchers, following the guidelines provided in the BPA guide.

Based on the information contained in the seven country studies, a total of five complete import-export processes – from the factory of the manufacturer in the exporting country all the way to the warehouse of the importer – have been assembled. Although far from comprehensive and subject to limitations (outlined in the next section), the study clearly documented the complexity of the overall trade process, and in particular that of the export process faced by firms in many countries of the region. While country-specific recommendations can be found in each of the country studies summarized in Part II of this publication, a number of policy implications may be drawn from the regional study, as outlined below.

- ***Full and inclusive representation of the private sector in trade facilitation initiatives is essential.***

Reducing the time and cost of trade transactions cannot be done without the support of the private sector. All procedures and steps in the import and export processes involve the private sector, while only some of them involve national regulatory authorities directly. While Governments could and should streamline the procedures over which they have direct control (e.g. customs and other regulatory procedures), they may also need to encourage private sector collaboration and coordination initiatives to achieve significant results. Chambers of Commerce and/or Industry Associations sometimes play a significant role in issuing trade-related documents, such as certificates of origin or quality certificates, and the procedures put in place by these entities may not always facilitate trade and can sometimes be discriminatory. Similarly, some private sector intermediaries, e.g. transport and logistics service providers and customs brokers, do not always have an incentive to support trade facilitation, as some of the services they render may become unnecessary if import and export processes are simplified or automated. Governments could address these issues by ensuring more inclusive representation of the private sector in national trade facilitation bodies (or similar institutions in charge of enabling trade).

- ***Implementation of basic trade facilitation measures should be consistently enforced and re-enforced nation-wide.***

The process analyses revealed that simple trade facilitation measures, such as the provision of customs clearance services during holidays and weekends, and the harmonization

of work hours at border checkpoints on both sides of a land border, are sometimes not implemented. The studies also indicated that the trade situation varies significantly depending on the route and border crossings used within each country. These findings highlight the need for central authorities to promote a change of mind-set among the staff of trade control agencies in terms of the importance of trade facilitation and their role in it. Development of change management programmes encouraging officials to develop and test simple and pragmatic trade facilitation solutions at the local level in consultation with the private sector – and/or officials on the other side of the border if possible – may be considered.

- ***Paperless trade, including development of national and regional single windows, needs to be prioritized for trade facilitation.***

Preparation of documents and exchange of information among various parties involved (even before the goods start moving from the factory, or before they arrive at the port in case of imports) account for the largest share of the time required to complete an import or export process. As such, the development of single window facilities for submission and processing of information and documents is important. Again taking into account the importance of private sector actors in the transaction chain, the development of single window facilities should enable not only submission of information to regulatory and control agencies but to both public and private actors along the transaction chain, thus facilitating trade. Such “extended” national single windows are now operating in the Republic of Korea and Singapore (Koh Tat Tsen, 2011). At the same time, the study found that there is limited use of modern information and communication technologies and a heavy reliance on paper documents throughout the import and export processes in the countries studied. Increased use of ICT and the development of paperless trade should therefore be pursued more vigorously for trade transactions to be facilitated.

- ***Physical inspections should be minimized whenever possible, in particular through adoption of risk management techniques by all organizations involved in the trade process.***

Inspection and testing procedures often increase the average transaction time required to complete export and import processes. More importantly, the study found that inspections affect the timeliness and predictability of the trade transaction process; key factors in enabling firms to participate in international production networks. Inspections are often required at various stages of the import and export processes, typically at the border or port for imports, but also often as part of the preparation of documents in the case of exports. The frequency of inspections should be minimized through the use of appropriate risk management techniques. While customs often have some form of risk management system in place, other regulatory agencies often do not. Building the capacity of these non-customs agencies and developing inter-agency risk management systems should be considered, along with joint (multi-agency) inspections, when needed. Setting up certification programmes where the quality and other characteristics of goods can be ensured, through control of the production process at the factory, rather than for every shipment, could also be promoted as a way to reduce the need for inspections.

- ***Healthy competition among transport, logistics and other trade-related service providers should be encouraged.***

The study clearly showed the key role that is played by service providers in the trade process. Aside from preparation of documents, which is often outsourced in part to service providers, inland carriage and handling and terminal handling are the most time-consuming procedures in the import and export processes. Providing traders with access to a variety of high quality and affordable services is therefore essential in reducing the costs and time of import and export processes. This implies the need for countries that are aiming to improve trade performance to carefully review policies related to transport and other trade-related service sectors, to ensure that existing service providers are not unduly protected and have clear incentives to provide the efficient services needed by the trading community.

- ***Reviewing payment systems and their efficiency may reveal new opportunities for improving trade facilitation performance.***

The analysis of the entire buy-ship-pay process provided some evidence of the extent of time involved in the buying and payment process relative to the shipping process. One interesting finding is that the payment process accounted in some cases for a large proportion of the time required for the overall trade process, sometimes even approaching the time needed for the shipping process (excluding international shipment). While in some cases this can be due to the payment method (e.g. open account method) or negotiated payment terms, some of the process analyses revealed delays in receiving payment of up to 15 days after all necessary documents specified in the letter of credit (L/C) had been submitted to the bank. These findings indicate the need for a more detailed review of payment systems, as well as of the efficiency and practices of financial intermediaries as a way to facilitate trade, particularly since the cost of L/Cs was also found to represent, in some cases, nearly half of the direct cost of exporting a 20-foot container (excluding international shipping costs).

- ***National trade facilitation performance monitoring mechanisms are needed to identify the real and most important barriers to trade efficiency.***

Regulatory authorities have a limited view of the entire trade process, often only aware of their own internal efficiency – or inefficiency. Traders also have limited awareness and information about procedural bottlenecks, as it is the intermediaries who hold a lot of the information on the time and cost of specific procedures. Whether the inefficiencies are actually due to the intermediaries or to other parties (e.g. regulatory authorities), and the impact of the inefficiencies, would need to be assessed independently and regularly in order to identify priorities for reform. Governments should therefore consider the establishment of national trade performance monitoring mechanisms or measurement systems. Regular, systematic business process analyses of import and export processes, similar to the ones conducted in this study, should be considered as the basis for such systems, possibly in combination with the World Customs Organization (WCO) Time Release Study methodology



(which focuses on a narrower set of procedures). Embedding performance measurement and monitoring into ICT systems being developed as part of paperless trade initiatives, such as customs automation systems and Radio-Frequency Identification (RFID) tracking of container systems, should also be considered, as such systems could provide real-time information and detailed records about the time taken to move goods and exchange electronic documents for all transactions.

- ***Industry-specific trade facilitation programmes should be considered, in particular for agricultural products.***

The product-specific studies clearly highlighted differences in the complexity and length of the trade process depending on the type of goods traded. For example, the often mandatory sampling and testing procedures for agricultural goods and food products were found to account for nearly half of the export time in some cases, often due to limited availability of recognized testing facilities in the exporting country. Such industry- or sector-specific bottlenecks may best be addressed through the implementation of industry- or sector-specific trade facilitation programmes.

- ***Harmonization of documentary requirements across countries should be actively pursued.***

A recurrent issue noted by the traders interviewed for the case studies is that, for a given product, different documentation is needed for exports to different destinations. These differences, more than the volume or number of documents, are found to create confusion and delays. Besides simplification of documentary requirements, a concerted effort should be made to align national procedures and documents to international standards and conventions (i.e. harmonization). In that context, participation of developing countries from Asia and the Pacific in the development of these international standards would be important, as would be the need to increase awareness and build the capacity of trade facilitation practitioners to implement existing standards. It is worth noting that differences in documentation stem not only from differing regulations across importing countries, but also from different requirements by individual buyers (e.g. requiring different types of quality certificates or requiring the information to be sent in different formats), such that involvement of international private sector associations in the harmonization efforts would be needed.

- ***Bilateral and regional free trade agreements should systematically address trade facilitation issues.***

Preferential treatment given to, or negotiated with, selected trade partners typically involves additional documentary requirements. The study found some evidence of significant delays associated with such requirements. Including trade facilitation provisions and standard guidelines should be considered, so as to ensure that the procedures involved in obtaining the additional documents and exchanging them across borders are as efficient as possible – and to maximize the utilization and benefits of bilateral and regional trade agreements.

## E. Limitations and Future Research

The study – including the individual country studies – is subject to several limitations. First, the findings are based on a limited number of product-specific case studies. It therefore may not be possible to generalize them to reflect all import and export procedures. As highlighted throughout this synthesis report, the trade process and its time and costs vary significantly depending on the product, origin, destination and route. The set of export and import time and cost estimates generated as part of the study may therefore not be used to draw definite conclusions on the relative performance of countries with each other.

Second, the various business process analyses that form the basis of the study are dependent on the quality of the input provided by the interviewees (i.e. staff and executives of selected companies involved in the relevant trade procedures). It is possible that the researchers and the executives could have overlooked some documents or costs involved in the process due to the repetitive and sometimes complex nature of these procedures. In fact, the research team members and their respective institutions often had difficulty gathering the information necessary to conduct BPAs and estimating the costs and time of exporting and importing. As mentioned earlier, traders do not always have detailed information about specific procedures, while intermediaries (service providers) and government agencies are often reluctant to share information. Traders are also sometimes concerned about providing information for a BPA for fear of that information being used against them by a competitor or a regulatory agency.

While various efforts were made by individual research team members to cross-check or validate their results, in most cases research team members could not validate the results through public national consultations (co-organized with the relevant government agencies or industry associations and opened to all interested public and private stakeholders). These consultations could not be organized (except in Bangladesh) because of limited resources and time. Some of the difficulties associated with collecting information and holding national consultations would probably have been alleviated if the BPA studies had been conducted under the work programme of a national trade facilitation body – or the relevant agency in charge of trade – as opposed to being part of a regional research initiative. It is hoped that such consultations will take place more systematically as part of future business process analyses for trade facilitation. Such consultation would indeed not only help in validating results, but would also help in building awareness and political will for reform – as evidenced by a business process analysis of rice exports from Cambodia conducted by ESCAP and UNNExT in 2011.

A third limitation of the study was that, while it provided a relatively detailed analysis of the existing “as is” trade processes for the products and countries covered, it did not generally include the design of new “re-engineered” procedures and processes. While this was clearly beyond the scope of the research, the design of the “to be” process is an integral part of the UNNExT business process analysis methodology. Relevant government officials and other trade facilitation stakeholders may therefore consider taking up the

challenge of designing “to be” trade processes, building and improving the UML diagrams developed by the ARTNeT researchers.

Overall, the study described in this publication was useful in gaining an understanding of the trade facilitation situation and the need to improve regional trade processes and procedures in Asia and the Pacific. It is clear, however, that more detailed national level studies should be undertaken, perhaps as part of national business process analysis programmes for trade facilitation, where the analysis would be updated regularly for a number of key strategic products as a way to measure progress over time. In that context, clearly distinguishing between import and export procedures that take place for every shipment and those that take place only from time to time (e.g. obtaining an export license compared to applying for an allocation of a preferential quota), systematically identifying the documentation and procedures that are electronic as opposed to paper-based, and emphasizing the collection of detailed information on the sequencing of the various procedures (e.g. which ones do or could take place in parallel) should be considered in future trade process analysis exercises.

In terms of future research, it is recommended to combine the business process analysis method used in this study with the time-cost-distance method often used in transport facilitation and corridor analysis studies. Such an approach would allow for a more precise understanding and evaluation of the various bottlenecks associated with competing modes of transport operating on the same route or alternate transit routes.<sup>32</sup> In addition, it is recommended to conduct business process analyses spanning regional production networks (e.g. from the import of raw materials or parts and components, to the export of the final product), as this would give a comprehensive view of the importance of trade facilitation in the operation of such networks.

---

<sup>32</sup> See Annex 7, which presents a time-cost-distance chart of Thailand's imports of electronic devices from China.

## Bibliography

- Asian Development Bank and United Nations Economic and Social Commission for Asia and the Pacific. (2009). *Designing and Implementing Trade Facilitation in Asia and the Pacific*, Mandaluyong City, Philippines: Asian Development Bank.
- Asia-Pacific Economic Cooperation Business Advisory Council. (1996). *APEC means Business: Building Prosperity for Our Community, Report to the Economic Leaders*, Singapore: Asia-Pacific Economic Cooperation Secretariat.
- Brooks, Douglas and Susan Stone. (2010). "Infrastructure and Trade Facilitation in Asian APEC", *Asian Development Review*, Vol. 27, No. 1, pp. 135-159.
- de Mel, Deshal, Suwendrani Jayaratne and Dharshani Premaratne. (2011). "Improving Import-Export Procedures and Processes in Sri Lanka", *ARTNeT Working Paper No. 91*, Bangkok: UNESCAP.
- De, Prabir. (2011a). "Trade Facilitation in India: An Analysis of Trade Processes and Procedures", *ARTNeT Working Paper No. 95*, UNESCAP, Bangkok.
- \_\_\_\_\_. (2011b). "Why is Trade at Borders a Costly Affair in South Asia? An Empirical Investigation", *Contemporary South Asia*, Vol. 19, No. 4, pp. 441-464.
- Djankov, Simeon, Caroline Freund and Cong S. Pham. (2010) "Trading on Time", *The Review of Economics and Statistics*, Vol. 92, No. 1. pp. 66-173.
- Duval, Yann and Chorthip Utoktham. (2011a). "Trade Costs in Asia and the Pacific: Improved and Sectoral Estimates", *Trade and Investment Division Staff Working Paper 04/11*, Bangkok: UNESCAP.
- \_\_\_\_\_. (2011b). "Trade Facilitation in Asia and the Pacific: Which Policies and Measures affect Trade Costs the Most?", *Trade and Investment Division Staff Working Paper 01/11*, Bangkok: UNESCAP.
- \_\_\_\_\_. (2010). "Intraregional Trade Cost in Asia: A Primer", *Trade and Investment Division, ESCAP Staff Working Paper 01/10*, Bangkok: UNESCAP.
- \_\_\_\_\_. (2009). "Behind the Border Trade Facilitation in Asia-Pacific: Cost of Trade, Credit Information, Contract Enforcement and Regulatory Coherence", *ARTNeT Working Paper No. 67*, Bangkok: UNESCAP.
- Freund, Caroline and Nadia Rocha. (2010). "What Constrains Africa's Exports?", *Policy Research Working Paper 5184*, Washington, D.C.: World Bank.
- Gamberoni, E., R. Lanz and R. Piermartini. (2010). "Timeliness and Contract Enforceability in Intermediate Goods Trade", *Staff Working Paper ERSD-2010-14*, Geneva: World Trade Organization.
- Government of India. (2011). *Task Force on Transaction Cost in Exports*, Department of Commerce, Ministry of Commerce and Industry, New Delhi. Available from <http://dgft.gov.in/exim/2000/tcostrep2011/tcostenglish.pdf>.

- Hollweg, C. and M.H. Wong. (2009). "Measuring Regulatory Restrictions in Logistics Services", *ERIA Discussion Paper Series*, No. 2009-14, Jakarta: Economic Research Institute for ASEAN and East Asia.
- Hossain, Syed Saifuddin and Md. Tariqur Rahman. (2011). "Facilitating Trade through Simplification of Trade Processes and Procedures in Bangladesh", *ARTNeT Working Paper No. 93*, Bangkok: UNESCAP.
- Keretho, Somnuk and Saisamorn Naklada (2011). "Analysis of Export and Import Processes of Selected Products in Thailand", *ARTNeT Working Paper No. 103*, Bangkok: UNESCAP.
- Kimura, F. and A. Obashi. (2011). "Production Networks in East Asia: What We Know So Far", *ADB Working Paper 320*, Tokyo: Asian Development Bank Institute.
- Koh Tat Tsen, Jonathan. (2011). "Ten Years of Single Window Implementation: Lessons Learned for the Future", Discussion Paper presented at the Global Trade Facilitation Conference, Geneva, 12-13 December 2011. Available from [www.unece.org/fileadmin/DAM/trade/Trade\\_Facilitation\\_Forum/BkgdDocs/TenYearsSingleWindow.pdf](http://www.unece.org/fileadmin/DAM/trade/Trade_Facilitation_Forum/BkgdDocs/TenYearsSingleWindow.pdf).
- Layton, B. (2007). "Trade Facilitation: A Study in the Context of the ASEAN Economic Community Blueprint", in H. Soesastro (ed.) *Deepening Economic Integration in East Asian – The ASEAN Economic Community and Beyond*, ERIA Research Project Report 2007, No. 1-2, Jakarta: Economic Research Institute for ASEAN and East Asia.
- Nordas, H.K. (2007). "International Production Sharing: A Case for a Coherent Policy Framework", *WTO Discussion Paper No. 11*, Geneva: World Trade Organization.
- Rajkarnikar, Pushpa Raj. (2011). "Improving Regional Trade Procedures and Processes: A Business Process Analysis of Exports of Vegetable Ghee from Nepal to India and China and Imports of Textiles to Nepal from India", *ARTNeT Working Paper No. 89*, Bangkok: UNESCAP.
- Ramasamy, Bala. (2011). "An Analysis of Import-Export Procedures and Processes in China", *ARTNeT Working Paper No. 88*, Bangkok: UNESCAP.
- Shepherd, B. (2010). "Trade Costs and Facilitation in APEC and ASEAN: Delivering the Goods?" *MPRA Paper No. 21531*. Available from <http://mpra.ub.uni-muenchen.de/21531/>.
- Shepherd, B. and J.S. Wilson. (2009). "Trade Facilitation in ASEAN Member Countries: Measuring Progress and Assessing Priorities", *Journal of Asian Economics*, Vol. 20, No. 4, pp. 367-383.
- Shinkai, Naoko and Zenebe Bashaw. (2011). "Regional Cooperation for Improvement of Trade Procedures: The Case of Japan", Study Conducted for ARTNeT, Bangkok: UNESCAP.
- United Nations Economic and Social Commission for Asia and the Pacific. (2011a). "Facilitating Intraregional Trade", *Asia-Pacific Trade and Investment Report 2011*, Chapter 6, pp. 89-100, Bangkok: UNESCAP.

- \_\_\_\_\_. (2011b). "Summary of Discussions and Recommendations", Asia-Pacific Trade Facilitation Forum 2011, "Trade Facilitation beyond Borders: International Supply Chain Efficiency", Seoul, 4-5 October 2011.
- \_\_\_\_\_. (2011c). "Facilitating Agricultural Trade", *ESCAP Trade and Investment Studies*, No. 74, Bangkok: UNESCAP.
- \_\_\_\_\_. (2011d). *Economic and Social Survey of the Asia and Pacific 2011*, Bangkok: UNESCAP.
- \_\_\_\_\_. (2011e). *Asia-Pacific Trade and Investment Report 2011*, Bangkok: UNESCAP.
- \_\_\_\_\_. (2010). The Development Impact of Information Technology in Trade Facilitation, *Studies in Trade and Investment* 69, Bangkok: UNESCAP.
- \_\_\_\_\_. (2006). An Exploration of the Need for and Cost of Selected Trade Facilitation Measures in Asia and the Pacific in the Context of the WTO Negotiations, *Studies in Trade and Investment* 57, Bangkok: UNESCAP.
- \_\_\_\_\_. (2002). *Trade Facilitation Handbook for the Greater Mekong Subregion*, Bangkok: UNESCAP.
- United Nations Economic Commission for Europe. (2007). "UN/CEFACT Framework of Standards for Paperless Trade: Digital Documents, Single Window, Data Harmonization and Capacity Building", ESCWA Regional Workshop, Cairo.
- \_\_\_\_\_. (2006). *Background Paper for UN/CEFACT Symposium on Single Window Common Standards and Interoperability*, Geneva: UNECE.
- \_\_\_\_\_. (2001). *Facilitation Measures Related to International Trade Procedures, Recommendation No. 18*, ECE/TRADE/271, New York and Geneva: UNECE.
- United Nations Network of Experts for Paperless Trade in Asia and the Pacific, United Nations Economic and Social Commission for Asia and the Pacific and United Nations Economic Commission for Europe. (2009). *Business Process Analysis Guide To Simplify Trade Procedures*, Bangkok: UNESCAP.
- Wilson, J.S., C.L. Mann and T. Otsuki. (2005). "Assessing the Potential Benefit of Trade Facilitation: A Global Perspective". *The World Economy*, Vol. 28, No. 6.
- World Bank. (2010a). Doing Business Database, Washington, D.C.: World Bank. Available from <http://www.doingbusiness.org>.
- \_\_\_\_\_. (2010b). Logistics Performance Index Database, Washington, D.C.: World Bank. Available from <http://www1.worldbank.org/PREM/LPI/tradesurvey/mode1c.asp>.
- World Trade Organization. (2011). WTO Trade Facilitation Negotiation Documents. Available from [www.wto.org](http://www.wto.org).

### Annex 1. Factory-to/from-sea-ship trading time and costs in Asia and the Pacific

	Time for completing trade procedures (days)					Cost of completing trade procedures (2000 constant USD)				
	2005	2011 (Export time)	2011 (Import time)	2011	% Change	2005	2011 (Export cost)	2011 (Import Cost)	2011	% Change
<b>Developing economies</b>	<b>35</b>	<b>28</b>	<b>30</b>	<b>29</b>	<b>-18.0</b>	<b>1 085</b>	<b>1 380</b>	<b>1 538</b>	<b>1 169</b>	<b>7.8</b>
<b>East and North-East Asia</b>	<b>23</b>	<b>18</b>	<b>19</b>	<b>18</b>	<b>-21.8</b>	<b>907</b>	<b>980</b>	<b>1 035</b>	<b>807</b>	<b>-11.0</b>
China	21	21	24	23	7.1	309	500	545	419	35.5
Democratic People's Republic of Korea										
Hong Kong, China	15	5	5	5	-66.7	370	575	565	457	23.4
Japan	11	10	11	11	0.0	886	880	970	741	-16.4
Mongolia	59	46	47	47	-20.5	2 178	2 265	2 400	1 869	-14.2
Macao, China										
Republic of Korea	12	7	7	7	-41.7	792	680	695	551	-30.5
<b>South-East Asia</b>	<b>29</b>	<b>20</b>	<b>21</b>	<b>20</b>	<b>-29.2</b>	<b>701</b>	<b>769</b>	<b>835</b>	<b>642</b>	<b>-8.4</b>
Brunei Darussalam		19	15	17			680	745	571	
Cambodia	49	22	26	24	-51.0	675	732	872	642	-4.9
Indonesia	28	17	27	22	-20.0	531	644	660	522	-1.7
Lao PDR	72	44	46	45	-37.5	1 353	1 880	2 035	1 568	15.9
Malaysia	16	17	14	16	-3.1	356	450	435	354	-0.3
Myanmar										
Philippines	18	15	14	15	-17.1	696	630	730	545	-21.8
Singapore	4	5	4	5	12.5	341	456	439	358	5.2
Thailand	23	14	13	14	-41.3	822	625	750	551	-33.0
Timor-Leste	26	25	26	26	0.0	864	1 010	1 015	811	-6.1
Vietnam	24	22	21	22	-8.5	674	580	670	501	-25.8
<b>South and South-West Asia</b>	<b>38</b>	<b>30</b>	<b>31</b>	<b>30</b>	<b>-20.7</b>	<b>1 047</b>	<b>1 499</b>	<b>1 709</b>	<b>1 285</b>	<b>22.7</b>
Afghanistan	82	74	77	76	-7.4	2 002	3 545	3 830	2 954	47.6
Bangladesh	46	25	31	28	-39.1	953	965	1 370	935	-1.8
Bhutan	38	38	38	38	0.0	1 406	2 230	2 805	2 017	43.5
India	40	16	20	18	-54.4	917	1 095	1 070	867	-5.5
Iran (Islamic Republic of)	33	25	32	29	-12.3	953	1 275	1 885	1 266	32.8
Maldives	21	21	22	22	4.9	1 044	1 550	1 526	1 232	18.0
Nepal	39	41	35	38	-2.6	1 447	1 960	2 095	1 624	12.3
Pakistan	35	21	18	20	-44.3	571	660	705	547	-4.3
Sri Lanka	26	21	19	20	-21.6	639	715	745	585	-8.5
Turkey	23	14	15	15	-35.6	543	990	1 063	822	51.4
<b>North and Central Asia</b>	<b>61</b>	<b>49</b>	<b>52</b>	<b>50</b>	<b>-16.8</b>	<b>2 017</b>	<b>2 688</b>	<b>3 132</b>	<b>2 331</b>	<b>15.6</b>
Armenia	36	13	18	16	-56.3	1 514	1 815	2 195	1 606	6.1
Azerbaijan	56	38	42	40	-28.6	2 463	2 905	3 405	2 527	2.6
Georgia	53	10	13	12	-78.3	1 192	1 595	1 715	1 326	11.2
Kazakhstan	83	76	62	69	-16.4	2 398	3 130	3 290	2 571	7.2
Kyrgyzstan	70	63	72	68	-2.9	2 154	3 210	3 450	2 668	23.8

## Annex 1. (continued)

	Time for completing trade procedures (days)					Cost of completing trade procedures (2000 constant USD)				
	2005	2011 (Export time)	2011 (Import time)	2011	% Change	2005	2011 (Export cost)	2011 (Import Cost)	2011	% Change
Russian Federation	36	36	36	36	0.0	1 523	1 850	1 800	1 462	-4.0
Tajikistan		82	83	83			3 850	4 550	3 365	
Turkmenistan										
Uzbekistan	92	71	92	82	-11.4	2 872	3 150	4 650	3 124	8.8
<b>Pacific</b>	<b>23</b>	<b>22</b>	<b>23</b>	<b>22</b>	<b>-3.8</b>	<b>863</b>	<b>998</b>	<b>1 022</b>	<b>809</b>	<b>-6.2</b>
American Samoa										
Australia	12	9	8	9	-29.2	757	1 060	1 119	873	15.3
Cook Islands										
Fiji	24	22	23	23	-6.3	497	655	635	517	3.9
French Polynesia										
Guam										
Kiribati	21	21	21	21	0.0	1 349	1 120	1 120	897	-33.5
Marshall Islands	27	21	25	23	-14.8	666	945	970	767	15.2
Micronesia (Federated States of)		30	30	30			1 295	1 295	1 037	
Nauru										
New Caledonia										
New Zealand	10	10	9	10	0.0	664	855	825	673	1.4
Niue										
Northern Mariana Is.										
Palau	32	29	33	31	-3.1	988	1 070	1 030	841	-14.8
Papua New Guinea	28	26	29	28	0.0	534	664	722	555	4.1
Samoa	29	27	31	29	0.0	774	820	848	668	-13.6
Solomon Islands	23	24	21	23	0.0	998	1 030	1 237	908	-9.0
Tonga	22	20	24	22	0.0	507	775	775	621	22.5
Tuvalu										
Vanuatu	28	21	20	21	-26.8	1 758	1 690	1 690	1 354	-23.0
<b>ESCAP Developed Economies</b>	<b>11</b>	<b>10</b>	<b>9</b>	<b>10</b>	<b>-10.9</b>	<b>769</b>	<b>932</b>	<b>971</b>	<b>762</b>	<b>-0.9</b>
<b>All economies</b>	<b>35</b>	<b>28</b>	<b>29</b>	<b>28</b>	<b>-18.6</b>	<b>1 107</b>	<b>1 387</b>	<b>1 547</b>	<b>1 175</b>	<b>6.1</b>

Source: Based on World Bank Doing Business Report data (World Bank 2011a).

Note: Trade time and trade costs are calculated as the simple averages of import and export times and costs, respectively, reported in the Doing Business Report. Costs are expressed in constant USD to allow for comparison over time.



## Annex 2. Logistics performance index of selected countries in the Asia-Pacific region

### Logistics Performance Index (LPI)\*, 2010

Global Rank	Country or Region	LPI	Customs <sup>1</sup>	Infra-structure <sup>2</sup>	Inter-national ship-ments <sup>3</sup>	Logistics com-petence <sup>4</sup>	Tracking & tracing <sup>5</sup>	Time-liness <sup>6</sup>
79	Bangladesh	2.7	2.33	2.49	2.99	2.44	2.64	3.46
27	China	3.5	3.16	3.54	3.31	3.49	3.55	3.91
47	India	3.1	2.70	2.91	3.13	3.16	3.14	3.61
7	Japan	4.0	3.79	4.19	3.55	4.00	4.13	4.26
147	Nepal	2.2	2.07	1.80	2.21	2.07	2.26	2.74
137	Sri Lanka	2.3	1.96	1.88	2.48	2.09	2.23	2.98
35	Thailand	3.3	3.02	3.16	3.27	3.16	3.41	3.73
	East Asia and the Pacific	2.7	2.41	2.46	2.79	2.58	2.74	3.33
	South Asia	2.5	2.22	2.13	2.61	2.33	2.53	3.04

Source: World Bank LPI Database (World Bank 2011b).

Note: \*The scores are from one to five, one being the worst performance for the given dimension.  
 1. Efficiency of the clearance process by border control agencies, including Customs.  
 2. Quality of trade and transport related infrastructure. 3. Ease of arranging competitively priced shipments. 4. Competence and quality of logistics services. 5. Ability to track and trace consignment. 6. Timeliness of shipments in reaching destination within the scheduled or expected delivery time.

### Annex 3. Summary of processes, documents and stakeholders involved in the import of raw materials for producing electronic devices in Thailand

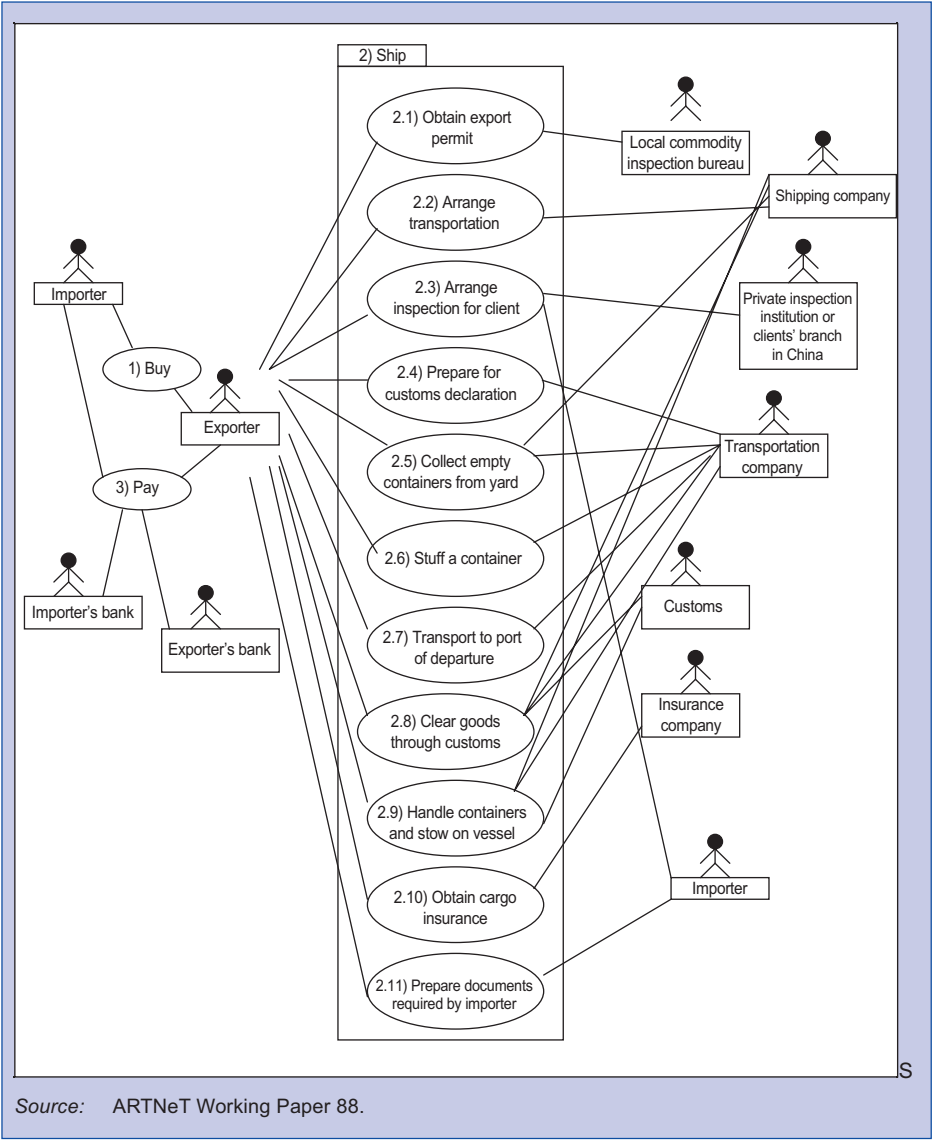
Import Processes	Related Documents	Stakeholders
1. Buy (Conclude sale contract and trade terms)	Proforma Invoice, Purchase Order	Importer, Exporter/Representative
2. Obtain permission for raw materials release	Request for Import Duty Exemption on Raw Materials, copy of import invoice, copy of Promotion Certificate (In case of request for raw materials release for the first time), copies of A/L & B/L (In case of request for raw materials release for the first time), Import Declaration (In case of using bank guarantee for release of raw materials or using the right reservation)	Importer, Investor Club Association, Board of Investment.
3. Request for vessel berthing	Ship Schedule, Ship Particular, Ship Profile, Notification of vessel berthing, Notification of vessel entering port city, Crew List, Last Port Clearance (Original), CLC Certificate (In case of loading oil tanks with weight exceeding 200 tons), Certificate of Fitness (In case of loading dangerous goods, LNP/ LPG, or chemical substances), Pilot Requirement Form, document of "Entering or Sailing or Shifting", Application for Vessel Entering the Port Area, Inward Container List Cargo Manifest, Application for tug and other related services	Ship Agent, Royal Thai Customs Department, Port Authority of Thailand, Pilot Station, Marine Promotion Bureau
4. Unload goods from vessel	Inward Container List, Cargo Manifest, Notification of Goods Transfer and Loading Containers, Discharged Report (Tally Sheet), Report of port use and services	Ship Agent, Customs Department (Computer System), Port Authority of Thailand
5. Declare goods to Customs	Invoice, Packing List, Import Declaration, Duty Payment Receipt	Importer, Customs Department (Computer System)
6. Arrange goods for inspection	Original and copy of bill of lading, Delivery Order, Request for Opening Goods Containers, Request for Release of Goods Containers from Customs' Custody, Wharf receipt, Payment receipt, Delivery Container Slip	Importer, Haulage, Ship Agent, Port Authority of Thailand

**Annex 3. (continued)**

Import Processes	Related Documents	Stakeholders
7. Inspect and release goods	Wharf Receipt, Delivery Order, Request for Opening Goods Containers, Request for Release of Goods Containers from Customs' Custody, Request for Inspection, Customs' instruction of goods inspection, Delivery order (Kor Sor Kor 100), Container Slip/EIR for FCL containers or the Cargo Slip for LCL containers	Importer, Haulage, Customs Department
8. Payment process	Proforma Invoice, Commercial Invoice, Insurance Policy, Packing List, Health Certificate, Bill of Lading, Certificate of Origin, Original Letter of Credit (L/C)	Importer, Exporter, Importer's Bank, Exporter's Bank

Source: ARTNeT Working Paper 103.

Annex 4. UML Case Diagram of the export of electronics from China to Thailand



Annex 5

(a) Export time and its components (days)

(Time in days, and costs in USD/TEU)														
Export from Product	Bangladesh (BL)	China (CH)	India (IN)	Japan (JP)	Nepal (NP)	Sri Lanka (SL)	Thailand (TH)							
	Gar. <sup>1</sup> Shrimp	Gar. <sup>1</sup> Elec. <sup>2</sup> C. Yarn <sup>3</sup> Veg. <sup>4</sup>	A. Parts <sup>5</sup> U. Cars <sup>6</sup>	V. Ghee <sup>7</sup> V. Ghee <sup>7</sup>	Tea	R. Tyre <sup>8</sup> A. Part <sup>5</sup>	Sug. <sup>9</sup>							
1. BUY process/other pre-shipment procedures*	24.50 <sup>#</sup> [2.00]	1.00	2.50	9.00	2.00	10.00	4.50	2.50	2.00	7.25	2.00			
2. Export time**														
(i) Document preparation	5.50	21.75	4.00	9.00	10.00	11.00	4.00	5.00	6.00	5.51	2.00	10.00		
(ii) Inland carriage and handling	1.50	1.50	3.90	5.10	7.00	4.00	2.00	1.00	15.0* (0.5)	1.30	0.30	1.50	2.00	
(iii) Inland customs	1.50	1.50	2.30	0.20	4.00	2.00	4.00	2.00	1.50	0.25	0.25	1.00	1.00	
(iv) Terminal handling	5.00*	5.00	1.30	1.20	2.00*	2.00	4.00	1.00	4.00*	2.00	1.70	3.25	2.00	
Export time***	13.50	29.80	11.50	15.50	23.00	19.00	14.00	9.00	54(36)	27(9)	9.06	7.26	11.00	
3. PAY process/post-shipment procedures*	4.00	3.50	15.00	1.00	8.00	5.00	3.00	1.00		7.00	7.00	38.00	2.00	
4. Total export process time****	42.00 <sup>#</sup> [19.50]	36.75	27.50	19.00	40.00	32.00	19.00	20.00	(40.50)	(11.50)	18.06	17.26	53.00	15.00
Export costs (\$ per container)	935.00	500.00	366.50	366.50	531.52	550.56	369.00	499.94	1 066.86	833.00	435.00	237.00	509.00	430.00

Notes: 1. Garments. 2. Electronics. 3. Cotton Yarn. 4. Vegetables. 5. Auto parts. 6. Used cars. 7. Vegetable ghee. 8. Rubber tyres. 9. Sugar. \* Terminal handling time at seaport estimated based either on that of other export products analysed in the study or on DBD data for that country, for the purpose of comparison across country and with DBD numbers; In the case of Nepal, number in parenthesis indicate time (days) for moving goods from factory to the border for overland export to India/China; # Includes 22.50 days for import of raw materials for production of garments (if we exclude it, the total pre-shipment time becomes just 2 days, and total time for export reduces to 19.50 days). ++ based on WB's DBD definition. +++ Sum of processes 2(i) to 2(iv). ++++ Sum of processes 1 to 3.

(b) Import time and its components (days)

(Time in days)

Import to Product	Nepal (NP)	Bangladesh (BL)	Sri Lanka (SL)		China (CH)		India (IN)		Japan (JP)		Thailand (TH)
	Fabrics	C. Yarn and Fabrics	Sugar	U. Cars	Fabrics	A. Parts	Fabrics	R. Tyres	Tea	Fabrics	Electronics
1. BUY process/other pre-shipment procedures	2.00	1.50	1.50	2.00	2.00	1.00	1.00	2.00	7.00	9.00	1.00
2. Import Time											
(i) Document preparation	1.00	4.25	2.50	2.25	1.80	5.50	5.50	4.00	2.50	5.00	1.00
(ii) Customs	5*(2.25)	2.00	2.00	1.00	1.00	4.50	1.75	2.00	1.5(4.5**)	2.00	0.50
(iii) Terminal handling	4.00*(0)	4.00*(0)	4.00*	3.00*	3.00*	3.00*	3.00*	5.00	4.00	3.50	2.35
(iv) Inland transportation	10*(0.75)	0.75	2.00	0.10	0.25	1.50	1.50	2.00	1.00	1.00	0.25
Import time***	20.00	11.00	10.50	6.35	6.05	14.5	11.75	13.00	9.50	11.50	4.15
3. PAY process/post-shipment procedures	2.00	1.50	1.50	1.00	1.00	0.50	0.50	7.00	7.00	1.00	1.00
4. Total import process time****	24.00	14.00	13.50	9.35	9.05	16.00	13.25	22.00	23.50	21.50	6.00
Import Costs (United States dollars per container)	(320)	(415)		677	403			359	410		300

Notes: Abbreviations follow Annex 5(a) \*Estimated number based on DBD data for that country, for the purpose of comparison across country and with DBD numbers. Numbers in ( ) indicate days or United States dollars for goods to go from importing country's land border to importer's warehouse. + based on DBD data. \*\* in case of inspection for special kinds of tea. +++ Sum of processes 2(i) to 2(iv). ++++ Sum of processes 1 to 3. In the case of Thailand, vessel waiting time to enter berth and time for other terminal handling activities as reported in the DBD were added to the terminal handling activity time reported in the ARTNeT study in an effort to make the data more comparable.

### Annex 6. Timeliness data for selected import and export processes

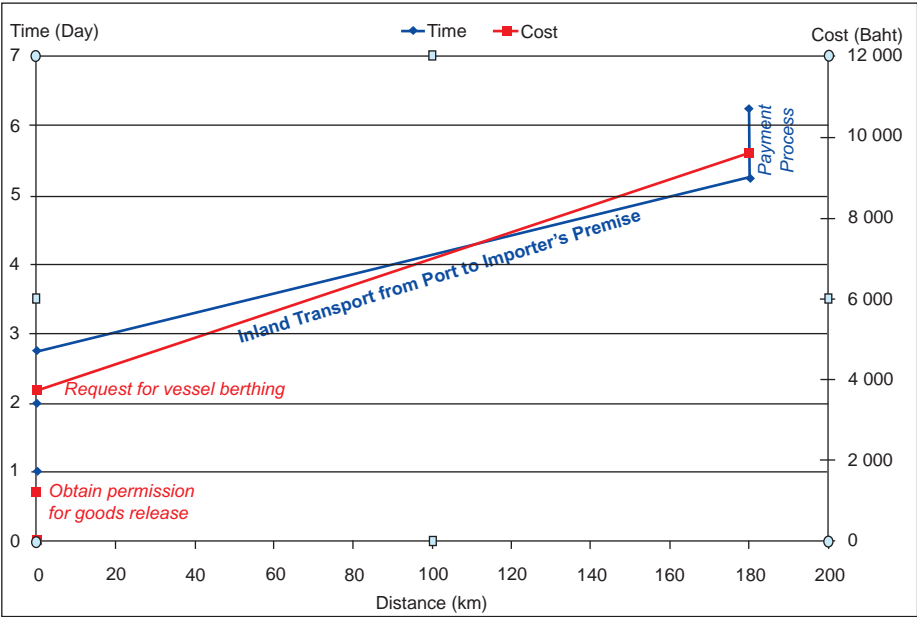
Process	Product	Exporter	Importer	Procedure	Time (min)	Time (max)	Time (avg.)	Max delay*
Export	Garments	Bangladesh	India	Documents preparation	6.5	15.5	11	41%
				Inland transportation	1	2	1.5	33%
				Inland Customs time	1.5	2.5	2	25%
				Terminal handling time	1	5	3	67%
				<b>Total time</b>	<b>10</b>	<b>25</b>	<b>17.5</b>	<b>43%</b>
Export	Shrimp	Bangladesh	Japan	Documents preparation	22	38.5	30.25	27%
				Inland transportation	1	2	1.5	33%
				Inland Customs time	1.5	2.5	2	25%
				Terminal handling time	1	5	3	67%
				<b>Total time</b>	<b>25.5</b>	<b>48</b>	<b>36.75</b>	<b>31%</b>
Import	Fabrics	Bangladesh	India	Documents preparation	4	9.5	6.75	41%
				Inland transportation	0.5	1	0.75	33%
				Inland Customs time	1.5	3.5	2.5	40%
				Terminal handling time*	0.5	3	3	0%
				<b>Total time</b>	<b>6</b>	<b>14</b>	<b>10</b>	<b>40%</b>
Import	Sugar	Bangladesh	Thailand	Documents preparation	3	7	5	40%
				Inland transportation	1	3	2	50%
				Inland Customs time	1.5	3.5	2.5	40%
				Terminal handling time*	2	4	3	33%
				<b>Total time</b>	<b>7.5</b>	<b>17.5</b>	<b>12.5</b>	<b>40%</b>
Export	Yarn	India	Bangladesh	Documents preparation	20	26	23	13%
				Inland transportation	5	7	6	17%
				Inland Customs time	1	3	2	50%
				Terminal handling time	1	1	1	0%
				<b>Total time</b>	<b>27</b>	<b>37</b>	<b>32</b>	<b>16%</b>
Export	Vegetables	India	United Arab Emirates	Documents preparation	17	23	20	15%
				Inland transportation	2	2	2	0%
				Inland Customs time	1	3	2	50%
				Terminal handling time	1	1	1	0%
				<b>Total time</b>	<b>21</b>	<b>29</b>	<b>25</b>	<b>16%</b>
Export	Fruits	India	EU	Documents preparation	17	25	21	19%
				Inland transportation	2	2	2	0%
				Inland Customs time	1	3	2	50%
				Terminal handling time	1	1	1	0%
				<b>Total time</b>	<b>21</b>	<b>31</b>	<b>26</b>	<b>19%</b>
Import	Tyres	India	Sri Lanka	Documents preparation	15	19	17	12%
				Inland transportation	1.8	2.2	2	10%
				Inland Customs time	1	1	1	0%
				Terminal handling time	1.4	2.6	2	30%
				<b>Total time</b>	<b>19.2</b>	<b>24.8</b>	<b>22</b>	<b>13%</b>

Source: ARTNeT Working Papers.

\* Maximum delay is calculated as a percentage of average time, i.e. (maximum time – average time)/(average time).

Annex 7

Time/cost-distance chart of imports to Thailand of raw materials for producing electronic devices for China



Source: ARTNeT Working Paper 103.



## **Part II**

### **Summaries of the Country Studies**



## **Facilitating Trade through Simplification of Trade Processes and Procedures in Bangladesh**

*Syed Saifuddin Hossain and Md. Tariqur Rahman*

### **Summary**

The urge for simplification of trade processes and procedures in the context of trade facilitation is nothing new. For decades, countries around the globe have been adopting strategies and devoting resources to minimizing cumbersome trade processes and garnering the maximum benefits from improved trading practices. As a member of the international trading system and as a least developed country (LDC), Bangladesh has been focusing on the issue of trade facilitation for several decades. Various policies adopted in the context of trade liberalization and automation of customs procedures surely bear this out. However, the country still faces significant challenges in terms of matching the standards set by its trading partners. The business community in Bangladesh appears to be content with the existing dynamics involved in export-import procedures, but at the same time the limited use of modern technology by government offices and banks in the context of international trade has been highly criticised by all stakeholders.

This study analyses the business procedures involved in a typical trade transaction for selected products namely, the export of ready-made garments (RMG) and shrimp, and the import of cotton fabric and sugar. The broad objective was to capture the cost, documentation and time requirements of such trade transactions with a view to identifying areas for further improvement. As the analysis revealed, the business process for the export of RMG from Bangladesh by sea involves 12 steps, 26 documents and 13 agencies, and is generally completed within 40 days, on average. Similar findings were obtained for all the other products mentioned above.

Discussions with the business community also resulted in articulation of a number of suggestions for further improvement of trade procedures and processes. These include full automation of all customs houses; adopting policies and designing required modalities to facilitate use of documents in electronic/digital format; development of infrastructure at port areas (e.g. container terminals, berthing stations, shaded warehouses in the customs controlled areas) on an urgent basis; and strengthening collaboration between government and business chambers to ensure a better business environment.

This study is available in full as ARTNeT Working Paper No. 93. It can be downloaded at: <http://www.unescap.org/tid/artnet/pub/wp.asp>

# An Analysis of Import-Export Procedures and Processes in China

*Bala Ramasamy*

## Summary

Recent studies suggest that customs and administrative procedures and practices have substantial effects on trade flows between countries. If these procedures and practices are inefficient and slow, they can act as significant barriers to international trade. It is not surprising that these have become the focus of attention, now that tariff and other quantitative barriers have and continue to be reduced. Since becoming a fully-fledged member of the WTO, China has made significant progress in the trade liberalization process. Recognizing trade facilitation as an important effort to spur further trade, China has made significant improvements in the procedures behind-the-border.

The World Bank Doing Business Report 2010 ranks China at 47<sup>th</sup> position in the “trading across borders” category. It takes between 21 and 24 days to export or import goods, involving 6-7 documents, at a cost of between \$500 to \$545 per container. While days to trade and number of documents are close to the East Asian average, the cost in China is about 55 per cent less than the average East Asia cost.

Previous studies on trade facilitation in China have taken a macro and/or a survey based approach. In contrast, the objective of this study was to go deeper and evaluate in detail the processes involved in the export and import of particular goods. The Business Process Analysis (BPA) method was used, such that all steps and procedures involved in the process were traced, and the time and cost were measured for each step. We have identified 4 products and 2 countries for the BPA analysis. To map export procedures, the study examined garment and electronic exports to Japan and Thailand, respectively, while for imports, the focus of the analysis was on textiles and automobile parts from Japan.

The study found somewhat different from those of the World Bank’s Doing Business. The number of days for the export and import processes is markedly lower than the WB’s Doing Business study. Our respondents claim that the export process takes between 9 to 14 days on average. However, the number of documents involved in the process is much higher, as many as 17 compared to only 7 reported in the WB study. In addition, the study found that the costs of importing and exporting are similar to those reported in the Doing Business Report, but are marginally lower than claimed by the WB. We attribute this partly to the nature of our respondents who have long term relationships with the buyers/sellers, as well because of the use of freight forwarders and customs brokers who are very familiar with the various processes and customs officials.

The results of the study indicate that using more information technology will only be effective in facilitating trade when the approval system is automatic rather than on a case-by-case basis. Thus, while electronic documents are beneficial in facilitating trade, the role of customs brokers seems to be more effective in China.

This study is available in full as ARTNeT Working Paper No. 88. It can be downloaded at: <http://www.unescap.org/tid/artnet/pub/wp.asp>

## Trade Facilitation in India: An Analysis of Trade Processes and Procedures

*Prabir De*

### Summary

Moving goods across borders requires meeting a vast number of commercial, transport and regulatory requirements. Inefficiencies in complying with these requirements, such as unnecessary administrative processes and procedures often create delays and costs. This study was conducted in order to understand how much these add to the costs of doing business across borders and how they affect growth in trade. The study aimed to estimate the time and costs of the procedures and processes so as to assist policy makers and other stakeholders to improve regional and global trade. One of the research objectives in BPA is to identify administrative and procedural barriers that unnecessarily impede the participation of more firms and more countries in regional and global trade, and propose solutions.

This study examined India's exports of cotton yarn to Bangladesh, fruit to the European Union (EU) and fresh vegetables to the Gulf, as well as India's imports of rubber tyres from Sri Lanka. The BPA analyses found that the time taken to complete export procedures for the export of cotton yarn is about 31 days, which is very high compared to any international benchmark. Most of this time is spent getting payment from the Bangladeshi importers. (export of cotton yarn, the export of vegetables to Gulf is not executed through letter of credit or advance payment), followed by the time required for transportation of goods. The whole process costs \$542 per container, on average, of which insurance and inland transportation costs are the major components. This study also found that besides tariff, the main bottlenecks are in inland transportation, customs clearance and getting payment from importers.

Unlike for the export of fruit to the EU, payment is made through advance payment arrangements. The export process takes about 33 days till the payment is received from the importers. Most time is spent transporting the goods from India to the EU, followed by the time required to receive payment. The average cost of exporting fruit to the EU is \$2 031 per container.

The export of vegetables to the Gulf takes 29 days. In this case, getting payment from importers takes the most time, followed by the time needed for transportation. The export of vegetables costs about \$1 573 per container. In both cases (fruit and vegetable exports), transportation costs (domestic and international) are the major barrier to trade. The bottlenecks are in customs clearance and getting payment from importers.

In the case of imports of rubber tyres from Sri Lanka, the trade processes and procedures are relatively simple. The import procedure consists in placing an order from the Indian office to a Sri Lankan subsidiary, clearing customs at an Indian port, unloading

the goods and inland transportation. It takes about 17 days to import rubber tyres from Sri Lanka, including settling the payment. Most of this time is spent in making the payment. The process of importing rubber tyres costs \$360 per container, on average, with a minimum of \$326 and a maximum of \$393. The high cost of inland transportation is the major barrier to trade.

This study is available in full as ARTNeT Working Paper No. 95. It can be downloaded at: <http://www.unescap.org/tid/artnet/pub/wp.asp>

## **Regional Cooperation for Improvement of Trade Procedures: The Case of Japan**

*Naoko Shinkai and Zenebe Bashaw*

### **Summary**

This study examines the administrative requirements and procedures for the import and export of products, the length of time it takes to deliver a product, and the costs involved in transporting and clearing a product at the port of entry or exit. The study involved interviewing importers of textiles and tea and exporters of auto parts.

While trade facilitation activities in Japan have led to tremendous improvements in customs clearance, documentation and standardization, the cost of importing and exporting goods still remains a major concern among the main companies interviewed in this study. Almost all the companies interviewed in this study stated that both transportation and trade transaction costs constitute a large percentage of the value of traded goods. Other issues included the sanitation inspections, mentioned by small-scale companies and individual traders as “bureaucratic”, and the stringent control of the purpose of items purchased and end users’ information, noted by traders in spare parts. There have been improvements in computerizing and standardizing documents for customs clearance, but respondents felt that the paperless and automated import/export system still appears to have limited use at this stage.

The major hurdles to trade cited by the respondents were the unpredictable rules and local practices as well as the language barrier (resulting in delays and misunderstandings of the terms of trade). For example, the strict and ever-changing regulations for textiles, cumbersome and expensive import duties on used cars, and cases of unaccountable goods and bribes in the export of spare parts.

Although the trade facilitation processes and procedures are not inefficient, the interviewed companies stated that the system is not transparent and is costly (customs and documentation, as well as transportation and packing). The time and costs of trade differ by various factors such as firm size, location of firms, types of products and port locations.

This study is available in full as ARTNeT Working Paper No. 109. It can be downloaded at: <http://www.unescap.org/tid/artnet/pub/wp.asp>



## **Improving Regional Trade Procedures and Processes: A Business Process Analysis of Exports of Vegetable Ghee from Nepal to India and China and Imports of Textiles from India to Nepal**

*Pushpa Raj Rajkarnikar*

### **Summary**

Recognizing the need for a greater efficiency in procedures related to international trade, an analysis was undertaken of the process of exporting vegetable ghee to India and China and the process of importing textiles from India.

Hydrogenated vegetable oil is known as vegetable ghee. Although its export currently declined to ebb, it used to vegetable ghee is exported by road transportation to both India and China. India provides preferential entry to Nepalese vegetable ghee under the bilateral trade agreement between India and Nepal. But there is quota on imports of vegetable ghee into India and it can only be exported from Nepal through specified agencies or to an importer with a permit from such an agency. Vegetable ghee is exported to India mostly on an advance payment basis. To China, it is exported under the Most Favoured Nation (MFN) treatment and on a full advance payment basis.

The process of exporting vegetable ghee that is followed by the exporter consists of 15 steps for exports to India and 13 steps for exports to China. The exporter must visit 12 institutions to complete the process of exporting to India, and nine for exporting to China. Altogether, 26 types of documents are required to complete the process of exporting vegetable ghee to India, while 21 types of documents are required to complete the process of exporting vegetable ghee to China. For exporting to India, the process of preparing the documents takes between 23 and 29 days, with between 11 and 17 days required for customs clearance and technical control. In sharp contrast, for exports to China the time required for document preparation is only five to six days and the time for customs clearance and technical control is only four to five days. Altogether, about 41 days are required to complete the process of exporting vegetable ghee to India and about 11 days are required for exports to China. The cost of exporting vegetable ghee to India is \$1 067 per container, while to China the cost is \$834.

Textiles are one of Nepal's major import items. They are mostly imported by road transportation through specified custom border points, and are imported on an advance payment basis. The importing process involves 10 steps, with a need to visit five institutions to complete the process. Altogether, 12 types of documents are required. Customs clearance takes between two and four days, while preparation of the documents for importing of textiles into Nepal takes three days. The required time for customs clearance varies depending on traffic congestion, the length of the queue of cargo waiting and the attitude of the officials on duty. The cost of importing textiles is \$320 per truck container.

This study is available in full as ARTNeT Working Paper No. 89. It can be downloaded at: <http://www.unescap.org/tid/artnet/pub/wp.asp>

## Improving Import-Export Procedures and Processes in Sri Lanka

*Deshal de Mel, Suwendrani Jayaratne and Dharshani Premaratne*

### Summary

International trade transactions are most effective when they involve parties that are efficient and coordinate well with each other. While individual companies and persons can undertake certain measures in this regard, some measures have to be undertaken at the country level. A deep understanding of trading processes is required in order to identify areas that create bottlenecks in trading and to take measures to minimize those bottlenecks.

This study examines in detail the trading procedures and processes for tea exports from Sri Lanka to Japan, tyre exports to India, motor vehicle imports into Sri Lanka from Japan and textile imports from India. These are mapped through a business process analysis. This study has attempted to list all the documentation and procedural requirements and to estimate the costs of trade in these products. Eight companies engaged in trading the selected products, and their freight forwarders, were interviewed to identify the processes, time required for each step and costs of trading. Interviews were also carried out with relevant government agencies, such as the Sri Lanka Customs and the Tea Board.

The study found that 24, 19, 18 and 19 documents are required for trading tea, rubber tyres, cars and textiles respectively. Furthermore, the number of agencies involved in the procedures ranges from 5 to 9 while the number of days required to export tea is 17.06 and to export rubber is 16.9, and the number of days required to import cars and textiles are 6.4 and 6.05 days, respectively. The costs range from \$79 to \$677.

No major differences were found in terms of the process or time taken by large and SME traders, but the findings indicate that Board of Investment companies have some advantages in terms of the time required to complete trade procedures.

The majority of the companies interviewed have been in business for a long time and employ Customs House Agents or freight forwarders who are well versed in the processes and procedures. Thus, the traders are accustomed to the processes. Nevertheless, they identified the need to automate trade procedures as a priority area for attention.

This study is available in full as ARTNeT Working Paper No. 91. It can be downloaded at: <http://www.unescap.org/tid/artnet/pub/wp.asp>

## **Analysis of Export and Import Processes of Selected Products in Thailand**

*Somnuk Keretho and Saisamorn Naklada*

### **Summary**

Thailand has signed free trade agreements with Australia, China, India, Japan, New Zealand and ASEAN, which have helped to increase its exports. These exports include agricultural and industrial goods such as rice, processed and frozen food, electronics, garments and textiles, automobiles and parts and accessories. Exports of jasmine rice, sugar, frozen shrimp, automobiles and auto parts, in particular, have been key contributors to economic growth.

Despite this success, administrative and procedural barriers to import and export processes unnecessarily impede further growth. As part of the ARTNeT Regional Study on Improving Regional Trade Procedures and Processes, BPA analyses were conducted on Thai exports of sugar to Bangladesh and exports of auto parts to India as well as on imports of the raw materials used to produce electronic goods. Business Process Analysis (BPA is a powerful tool that can help to identify barriers and suggest ways to streamline trade processes. The study has looked at the processes beginning with the signing of the contracts until the arrival of the products at a wholesale location in an importing country. The decision to analyze exports of sugar to Bangladesh and exports of auto parts to India was based on considerations of import needs and interests, existing trade practices and market potential.

This study found that the costs are quite high for preparing, sending and receiving documents as well for as the arrangement of inland transport. Many stakeholders are required to submit redundant information during the preparation of trade documents.

In the case of sugar exports, the study found that many procedures involving several stakeholders could be reduced and simplified. In the case of exports of automobile spare parts, the study found that several procedures and documentation requirements can be further automated and streamlined as part of the Thailand National Single Window development process.

This study is available in full as ARTNeT Working Paper No. 103. It can be downloaded at: <http://www.unescap.org/tid/artnet/pub/wp.asp>

---

## كيفية الحصول على منشورات الأمم المتحدة

يمكن الحصول على منشورات الأمم المتحدة من المكتبات ودور التوزيع في جميع أنحاء العالم. استلم منها من المكتبة التي تتعامل معها أو اكتب إلى: الأمم المتحدة، قسم البيع في نيويورك أو في جنيف.

### 如何购取联合国出版物

联合国出版物在全世界各地的书店和经售处均有发售。请向书店询问或写信到纽约或日内瓦的联合国销售组。

### HOW TO OBTAIN UNITED NATIONS PUBLICATIONS

United Nations publications may be obtained from bookstores and distributors throughout the world. Consult your bookstore or write to: United Nations, Sales Section, New York or Geneva.

### COMMENT SE PROCURER LES PUBLICATIONS DES NATIONS UNIES

Les publications des Nations Unies sont en vente dans les librairies et les agences dépositaires du monde entier. Informez-vous auprès de votre libraire ou adressez-vous à : Nations Unies, Section des ventes, New York ou Genève.

### КАК ПОЛУЧИТЬ ИЗДАНИЯ ОРГАНИЗАЦИИ ОБЪЕДИНЕННЫХ НАЦИЙ

Издания Организации Объединенных Наций можно купить в книжных магазинах и агентствах во всех районах мира. Наводите справки об изданиях в вашем книжном магазине или пишите по адресу: Организация Объединенных Наций, Секция по продаже изданий, Нью-Йорк или Женева.

### COMO CONSEGUIR PUBLICACIONES DE LAS NACIONES UNIDAS

Las publicaciones de las Naciones Unidas están en venta en librerías y casas distribuidoras en todas partes del mundo. Consulte a su librero o diríjase a: Naciones Unidas, Sección de Ventas, Nueva York o Ginebra.

---

---

United Nations  
Economic and Social Commission for  
Asia and the Pacific  
Trade and Investment Division  
United Nations Building  
Bangkok 10200, Thailand  
Tel.: +66 2 288 1902  
Fax: +66 2 288 1027, 288 3066  
E-mail: [escap\\_tid@un.org](mailto:escap_tid@un.org)

United Nations publication  
Sales No. E.12.II.F.3  
Copyright © United Nations 2011  
ISBN: 978-92-1-120637-1  
ST/ESCAP/2615



United Nations Publication  
Printed in Bangkok  
March 2012 – 300

USD \$20  
ISBN 978-92-1-120637-1

