

A Sustainable Population for a Dynamic Singapore

The White Paper on Population sets out a roadmap for Singapore's population policies to address our demographic challenge.

Singapore's sustainable population rests on three key pillars:



A STRONG AND COHESIVE SOCIETY WITH SINGAPOREANS AT THE **HEART** OF OUR NATION.



A DYNAMIC ECONOMY THAT CAN CREATE GOOD JOBS AND OPPORTUNITIES TO MEET SINGAPOREANS' **HOPES** AND ASPIRATIONS.

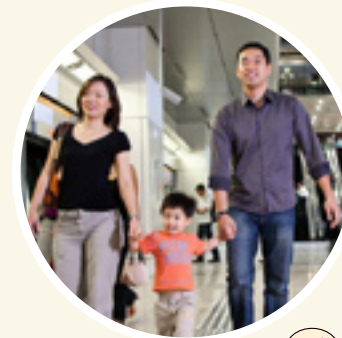


A HIGH QUALITY LIVING ENVIRONMENT AND A GOOD **HOME** FOR SINGAPOREANS.

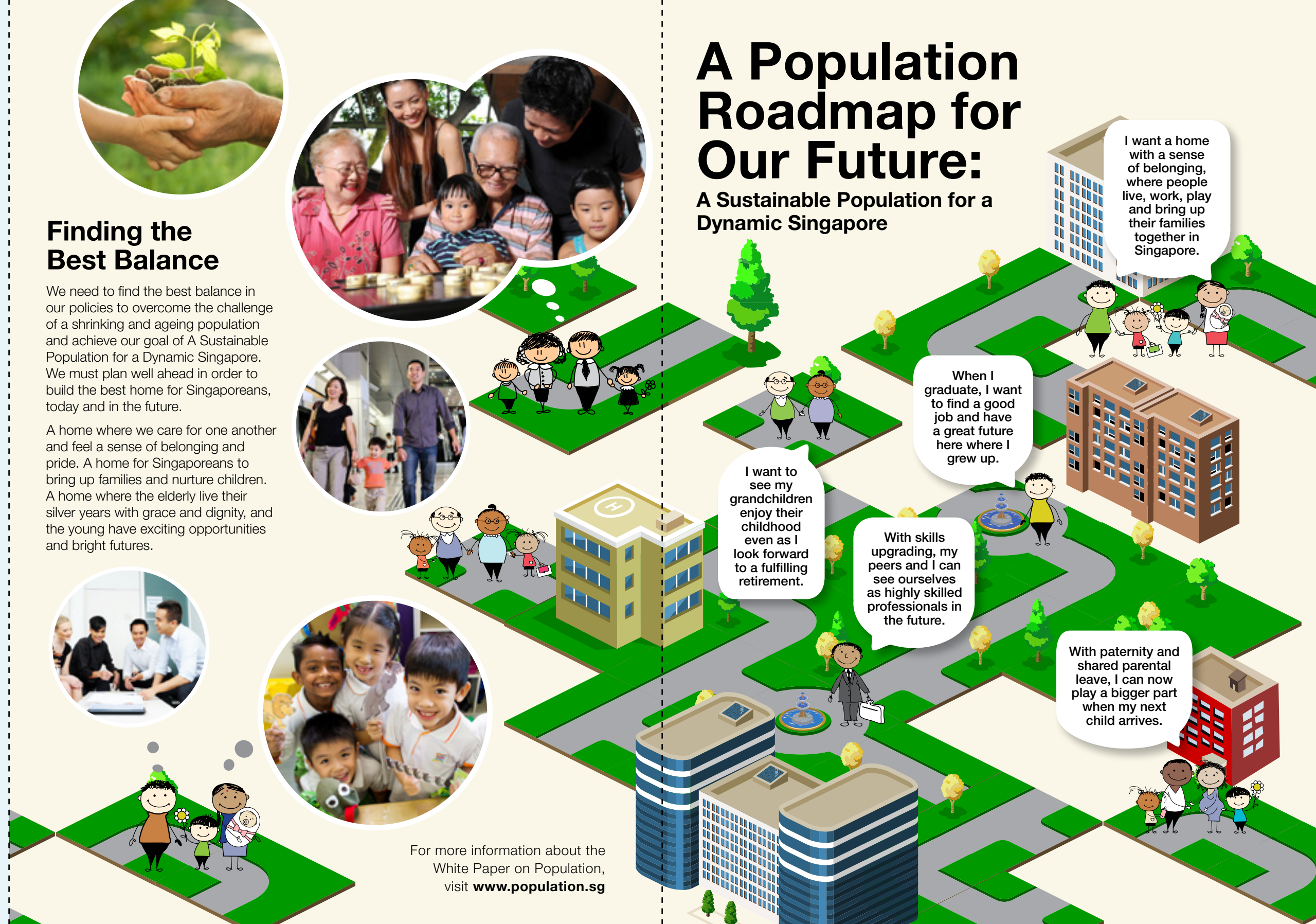
Finding the Best Balance

We need to find the best balance in our policies to overcome the challenge of a shrinking and ageing population and achieve our goal of A Sustainable Population for a Dynamic Singapore. We must plan well ahead in order to build the best home for Singaporeans, today and in the future.

A home where we care for one another and feel a sense of belonging and pride. A home for Singaporeans to bring up families and nurture children. A home where the elderly live their silver years with grace and dignity, and the young have exciting opportunities and bright futures.



A Population Roadmap for Our Future: A Sustainable Population for a Dynamic Singapore



I want a home with a sense of belonging, where people live, work, play and bring up their families together in Singapore.

When I graduate, I want to find a good job and have a great future here where I grew up.

I want to see my grandchildren enjoy their childhood even as I look forward to a fulfilling retirement.

With skills upgrading, my peers and I can see ourselves as highly skilled professionals in the future.

With paternity and shared parental leave, I can now play a bigger part when my next child arrives.

For more information about the White Paper on Population, visit www.population.sg



Sustaining a Core Singaporean Population

We will build a strong and cohesive society with a strong Singaporean core.

ENCOURAGE MARRIAGE AND PARENTHOOD

The Government is committed to helping Singaporeans who wish to marry and have children. Encouraging marriage and parenthood is a key priority.

The enhanced Marriage & Parenthood Package will:

- Make it faster and easier for couples to get housing so they can marry and start families earlier
- Provide support for conception and delivery costs
- Provide more help with child-raising costs, including healthcare costs
- Help working couples balance work and family commitments
- Encourage fathers to play a bigger role through paternity and shared parental leave

REMAIN OPEN TO IMMIGRATION

We will continue to welcome immigrants who can contribute to our country, share our values and integrate into our society. To stop our citizen population from shrinking, we will:

- Take in 15,000 to 25,000 new citizens each year;
- Grant about 30,000 PRs each year, to keep the PR population stable at between 0.5 and 0.6 million, to ensure a pool of suitable potential citizens

ENHANCE INTEGRATION EFFORTS

We will encourage new immigrants to adapt to our way of life.



Creating Good Opportunities for Singaporeans

We will build a globally competitive and vibrant economy that sustains inclusive growth and creates opportunities and good jobs for our people.

CREATE GOOD JOBS FOR SINGAPOREANS

With better skills and education, two in three Singaporeans will hold Professional, Managerial, Executive and Technical (PMET) jobs in 2030, compared to one in two today.

YEAR 2011



PMET
850,000



NON-PMET
850,000

YEAR 2030



PMET
1.25 Million



NON-PMET
650,000

To create good jobs for Singaporeans, we need a dynamic economy. Businesses will need a workforce with diverse skills, backgrounds and experiences, to produce goods and services not just for Singapore, but for the region and the world.

This requires a strong Singaporean core in the workforce, complemented by foreigners.



COMPLEMENT SINGAPOREAN CORE WITH FOREIGN WORKFORCE

We will carefully complement the Singaporean core with foreign manpower that can:

- Kick-start high value-added emerging sectors
- Support our social and development needs such as healthcare and construction
- Take up lower-skilled jobs, as more Singaporeans upgrade to higher-skilled jobs
- Enable businesses to expand flexibly during booms, while buffering Singaporeans from job losses in downturns

MODERATE OVERALL WORKFORCE GROWTH RATES

Overall workforce growth rates will slow. We will put in more effort to encourage firms to upgrade workers and raise productivity.



A High Quality Living Environment

Singapore will continue to be one of the best places in the world to live – a city for all ages, and a country we are proud to call home.

We will PLAN AND INVEST IN INFRASTRUCTURE AHEAD OF DEMAND,

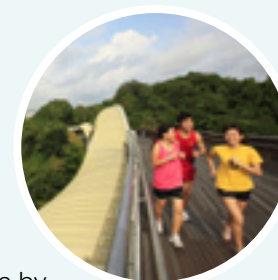
to create high quality urban spaces and ensure our infrastructure can support our total population. Total population growth rates will slow compared to the previous three decades.

Our population could range between 5.8 and 6 million in 2020, and between 6.5 and 6.9 million in 2030.

ADDITIONAL FACILITIES AND IMPROVEMENT WORKS

are in progress to relieve the strains we are currently facing:

- We are adding 800 new buses to the public bus fleet over 5 years, increasing capacity by 20%. Our rail network will be extended by about 100 km to 280 km by 2021. 8 in 10 homes will be within a 10-minute walk from a rail station in 2030.
- From now till 2016, 90,000 private housing units and 110,000 public housing units will be completed. This expansion should help meet the demand for housing.
- More land will be set aside for parks and green spaces. We will grow our park connector network to 360 km by 2020. At least 85% of our households will live within 400 m of parks by 2030.



We will explore new technology and innovative solutions to expand our land capacity and make better use of space to enhance liveability and support our needs.

