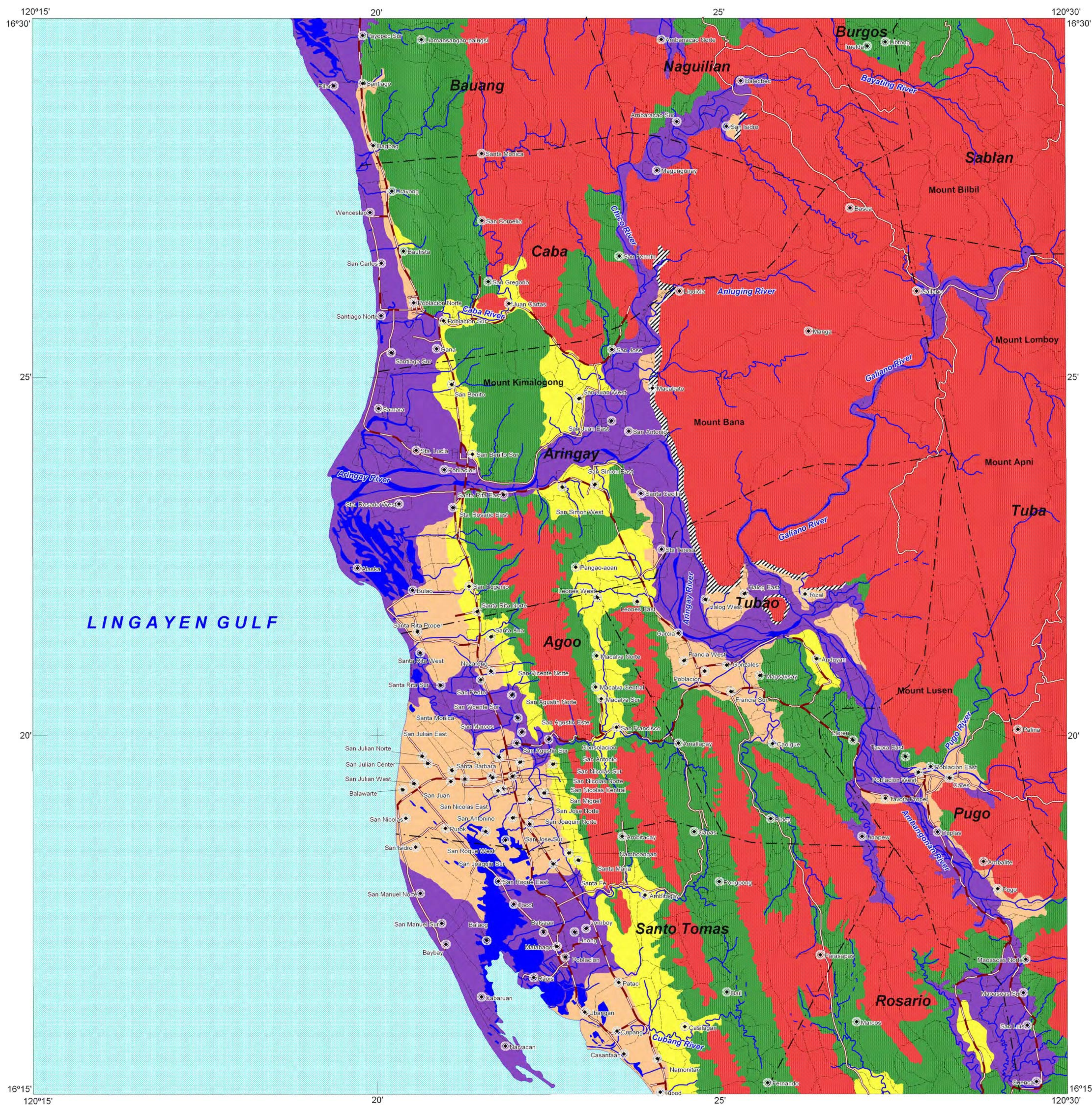


LANDSLIDE AND FLOOD SUSCEPTIBILITY MAP OF ARINGAY QUADRANGLE LA UNION AND BENGUET PROVINCES, PHILIPPINES



INDEX MAP



LEGEND :

- High susceptibility to landslide**
Areas with high landslide susceptibility rating have active/recent landslides and tension cracks that would directly affect the community. Those with steep slopes and drainages that are prone to landslide damming are also highly susceptible to landslides.
- Moderate susceptibility to landslide**
Areas with moderate landslide susceptibility rating have inactive/old landslides and tension cracks which are located away from the community. These areas usually have moderate slopes.
- Low susceptibility to landslide**
Areas with low to gentle slopes and lacking tension cracks have low landslide susceptibility rating.
- Possible landslide Debris Accumulation Zone**
These are areas where landslide debris could accumulate.
- High susceptibility to flooding**
Areas with greater than 1 meter flood height. These areas are immediately flooded during heavy rains for several hours; include landforms of topographic lows such as active river channels, abandoned river channels and areas along river banks; also prone to flashfloods.
- Low to moderate susceptibility to flooding**
Areas with less than 1 meter flood height. These are usually inundated during prolonged and extensive heavy rainfall or extreme weather condition.
- Roads**
- River**
- Municipal boundary**
- Barangay center location**



0 1.5 3
kilometers

TRANSVERSE MERCATOR PROJECTION
MAPPING SCALE 1:50,000

GIS Processing :
Lands Geological Survey Division

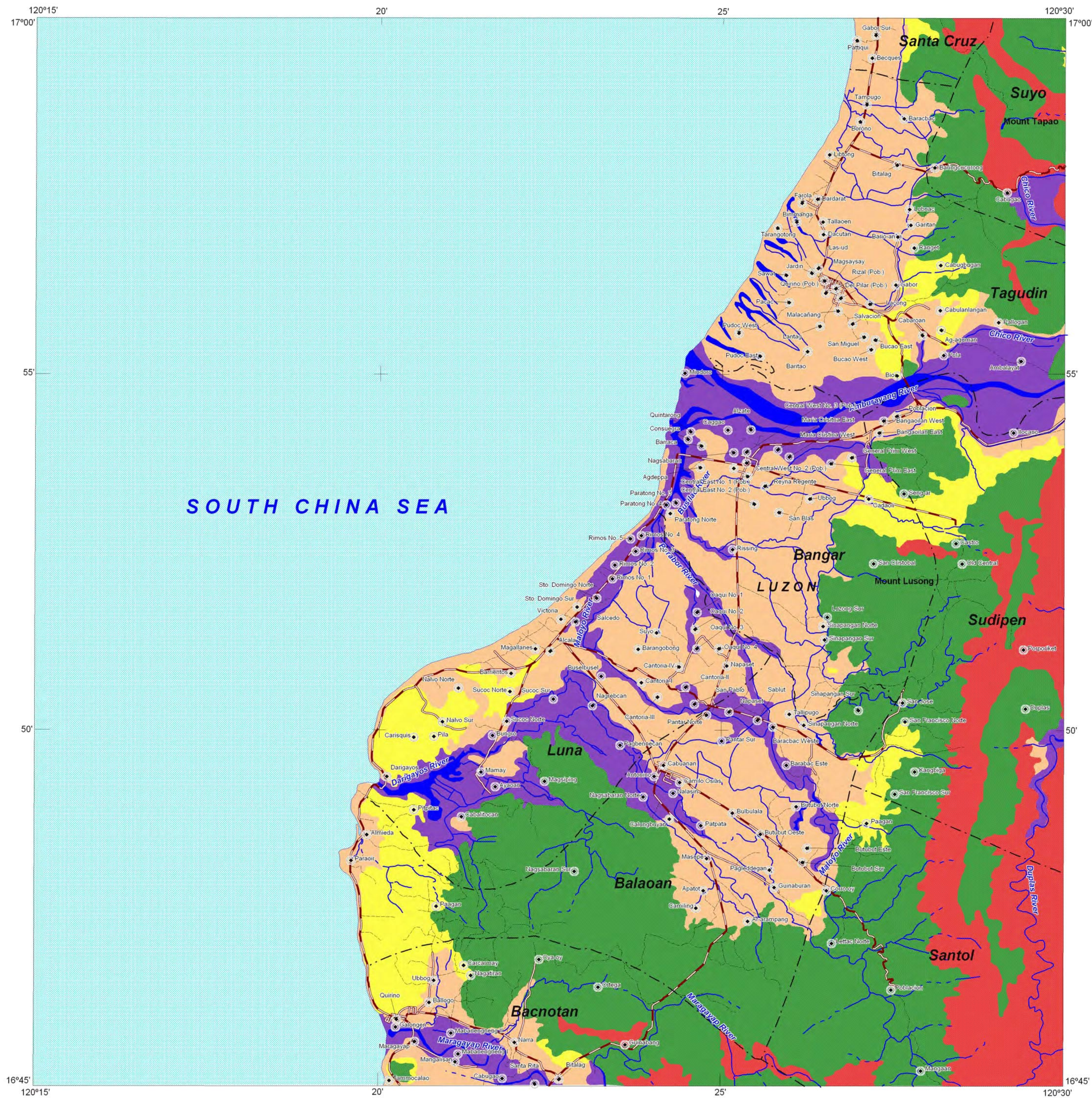
Data Sources:
MGB Geohazard Assessment Team
Geological Database and Information Systems Section
Lands Geological Survey Division
Geosciences Division MGB Region I and CAR

Base Map :
Sheet No. 7075 I "Aringay Quadrangle"



DEPARTMENT OF ENVIRONMENT AND NATURAL RESOURCES
MINES AND GEOSCIENCES BUREAU
LANDS GEOLOGICAL SURVEY DIVISION

LANDSLIDE AND FLOOD SUSCEPTIBILITY MAP OF BANGAR QUADRANGLE LA UNION AND ILOCOS SUR PROVINCES, PHILIPPINES

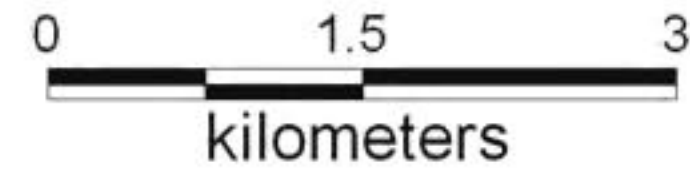


INDEX MAP



LEGEND :

- High susceptibility to landslide**
Areas with high landslide susceptibility rating have active/recent landslides and tension cracks that could directly affect the community. Those with steep slopes and drainages that are prone to landslide damming are also highly susceptible to landslides.
 - Moderate susceptibility to landslide**
Areas with moderate landslide susceptibility rating have inactive/old landslides and tension cracks which are located away from the community. These areas usually have moderate slopes.
 - Low susceptibility to landslide**
Areas with low to gentle slopes and lacking tension cracks have low landslide susceptibility rating.
 - High susceptibility to flooding**
Areas with greater than 1 meter flood height. These areas are usually flooded for several hours during heavy rains; include landforms of topographic lows such as active river channels, abandoned river channels and areas along river banks; also prone to flashfloods.
 - Low to moderate susceptibility to flooding**
Areas with less than 1 meter flood height. These are usually inundated during prolonged and extensive heavy rainfall or extreme weather condition.
- Roads
River
Municipal boundary
Barangay center location



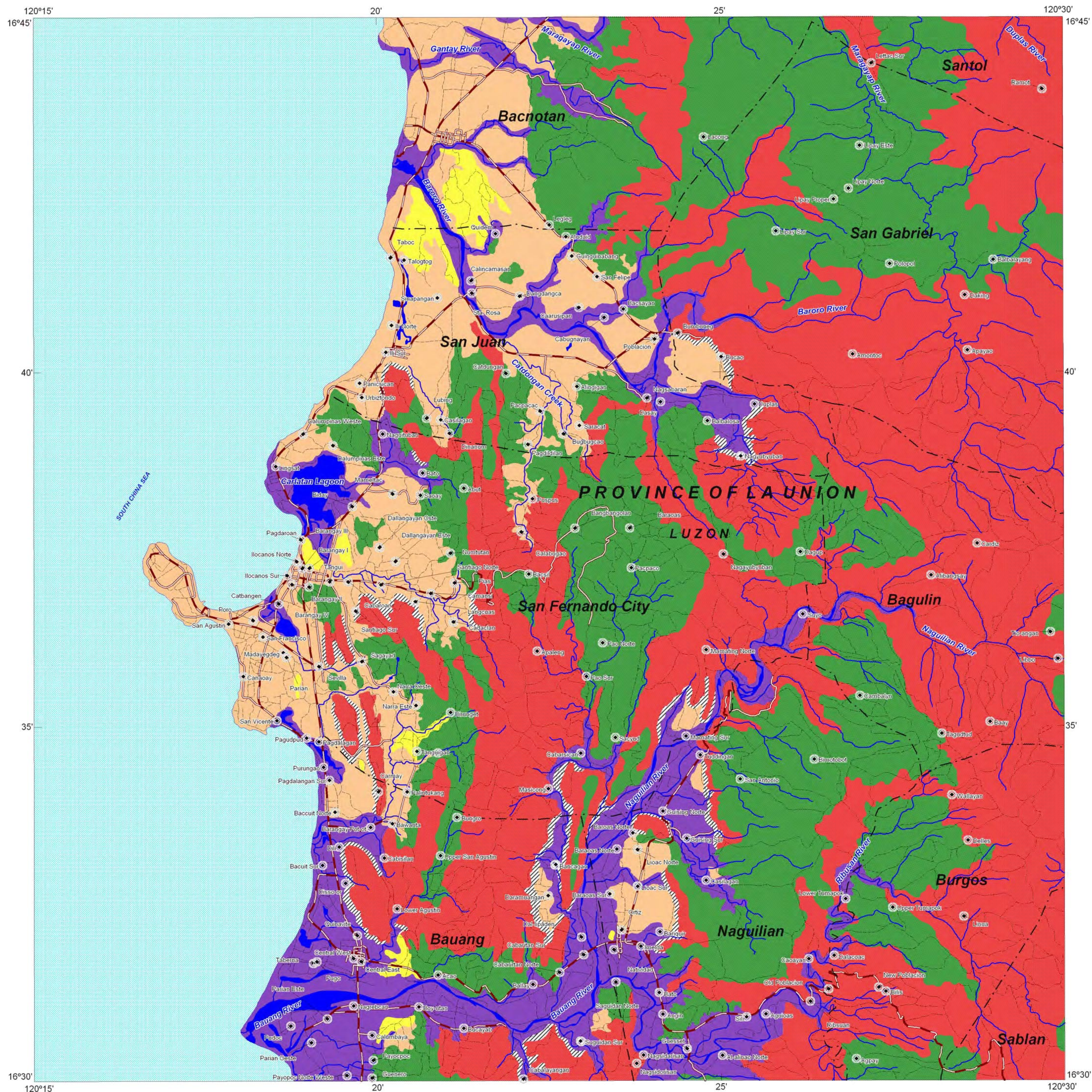
TRANSVERSE MERCATOR PROJECTION
MAPPING SCALE 1:50,000

GIS Processing :
Lands Geological Survey Division

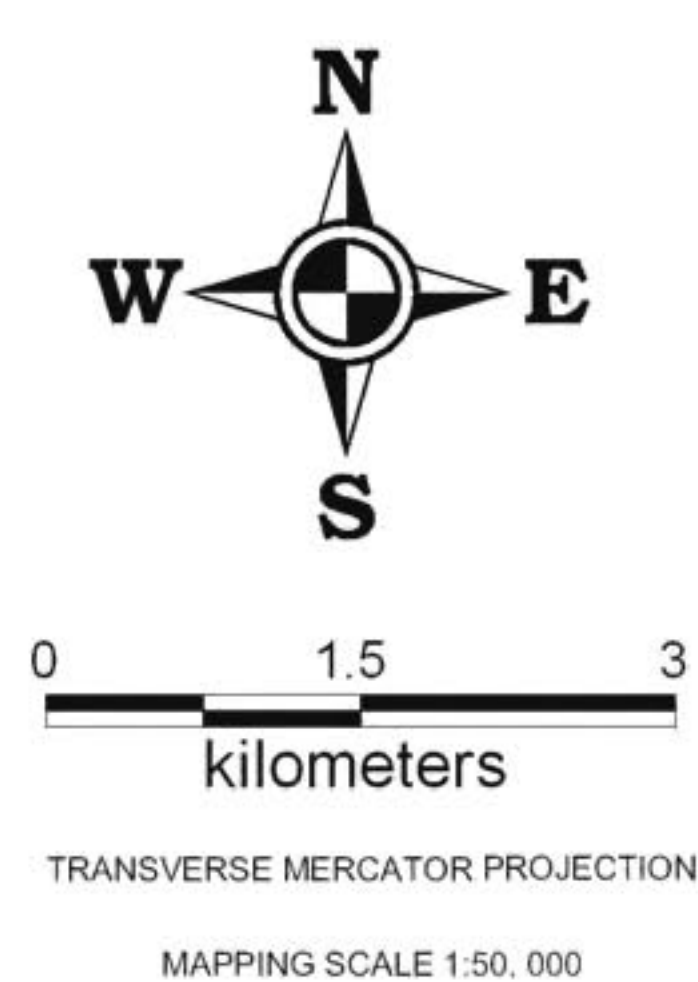
Data Sources:
MGB Geohazard Assessment Team
Geological Database and Information Systems Section
Lands Geological Survey Division
Geosciences Division MGB Region I

Base Map :
Sheet No. 7076 I "Bangar Quadrangle"

LANDSLIDE AND FLOOD SUSCEPTIBILITY MAP OF SAN FERNANDO QUADRANGLE, LA UNION PROVINCE, PHILIPPINES



- LEGEND :**
- High susceptibility to landslide**
Areas with high landslide susceptibility rating have active/recent landslides and tension cracks that would directly affect the community. Those with steep slopes and drainages that are prone to landslide damming are also highly susceptible to landslides.
 - Moderate susceptibility to landslide**
Areas with moderate landslide susceptibility rating have inactive/old landslides and tension cracks which are located away from the community. These areas usually have moderate slopes.
 - Low susceptibility to landslide**
Areas with low to gentle slopes and lacking tension cracks have low landslide susceptibility rating.
 - Possible Landslide Debris Accumulation Zone**
These are areas where landslide debris could accumulate.
 - High susceptibility to flooding**
Areas with greater than 1 meter flood height. These areas are usually flooded for several hours during heavy rains; include landforms of topographic lows such as active river channels, abandoned river channels and areas along river banks; also prone to flashfloods.
 - Low to moderate susceptibility to flooding**
Areas with less than 1.0 meter flood height. These are usually inundated during prolonged and extensive heavy rainfall or extreme weather condition
- Roads Municipal boundary
 River Barangay center location

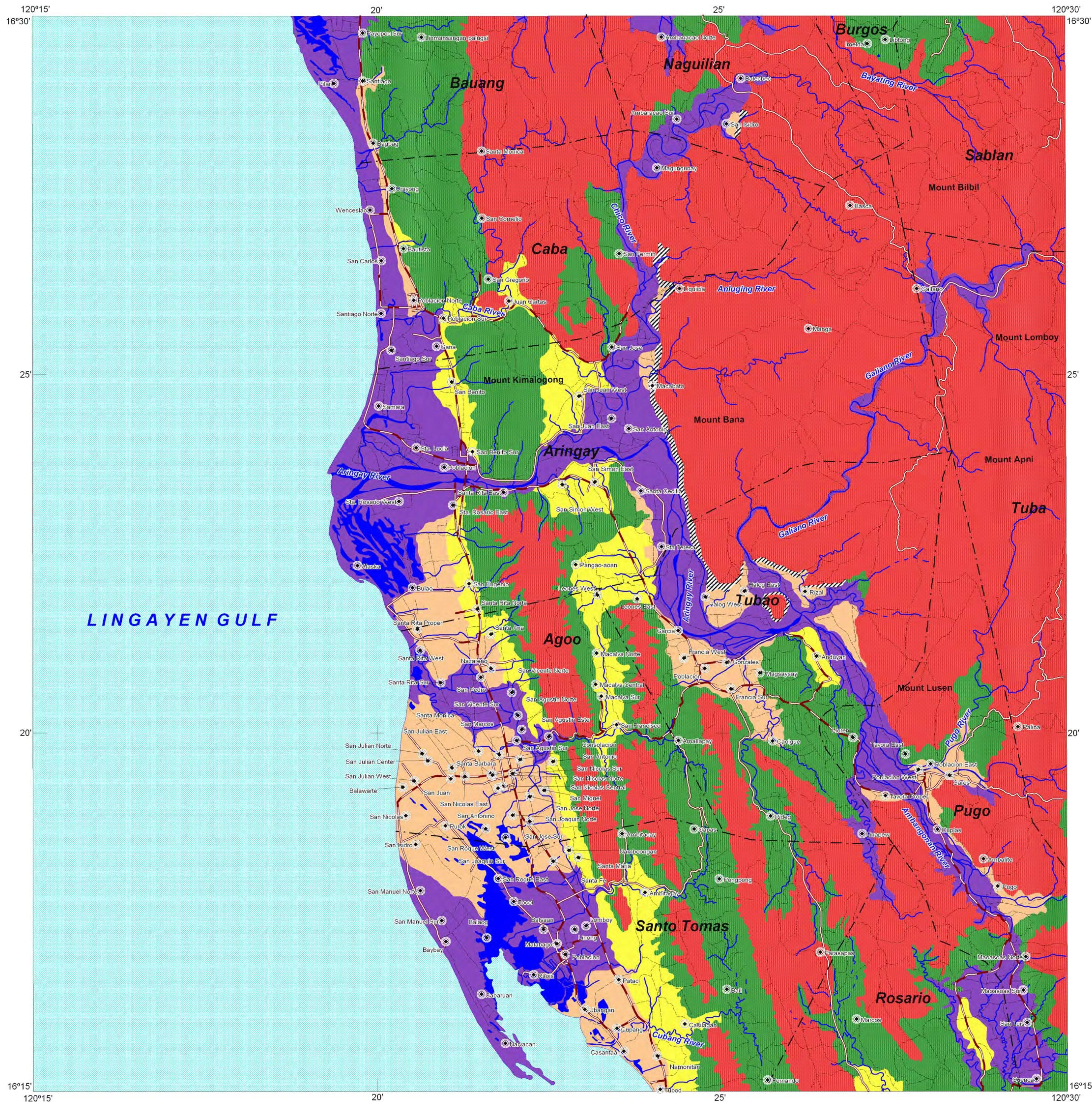


GIS Processing :
Lands Geological Survey Division

Data Sources:
MGB Geohazard Assessment Team
Geological Database and Information Systems Section
Lands Geological Survey Division
Geosciences Division MGB Region I

Base Map :
Sheet No. 7076 II "San Fernando Quadrangle"

LANDSLIDE AND FLOOD SUSCEPTIBILITY MAP OF ARINGAY QUADRANGLE LA UNION AND BENGUET PROVINCES, PHILIPPINES



INDEX MAP



LEGEND :

- High susceptibility to landslide**
Areas with high landslide susceptibility rating have active/recent landslides and tension cracks that would directly affect the community. Those with steep slopes and drainages that are prone to landslide damming are also highly susceptible to landslides.
- Moderate susceptibility to landslide**
Areas with moderate landslide susceptibility rating have inactive/old landslides and tension cracks which are located away from the community. These areas usually have moderate slopes.
- Low susceptibility to landslide**
Areas with low to gentle slopes and lacking tension cracks have low landslide susceptibility rating.
- Possible landslide Debris Accumulation Zone**
These are areas where landslide debris could accumulate.
- High susceptibility to flooding**
Areas with greater than 1 meter flood height. These areas are immediately flooded during heavy rains for several hours; include landforms of topographic lows such as active river channels, abandoned river channels and areas along river banks; also prone to flashfloods.
- Low to moderate susceptibility to flooding**
Areas with less than 1 meter flood height. These are usually inundated during prolonged and extensive heavy rainfall or extreme weather condition.
- Roads**
- River**
- Municipal boundary**
- Barangay center location**



0 1.5 3
kilometers

TRANSVERSE MERCATOR PROJECTION
MAPPING SCALE 1:50,000

GIS Processing :
Lands Geological Survey Division

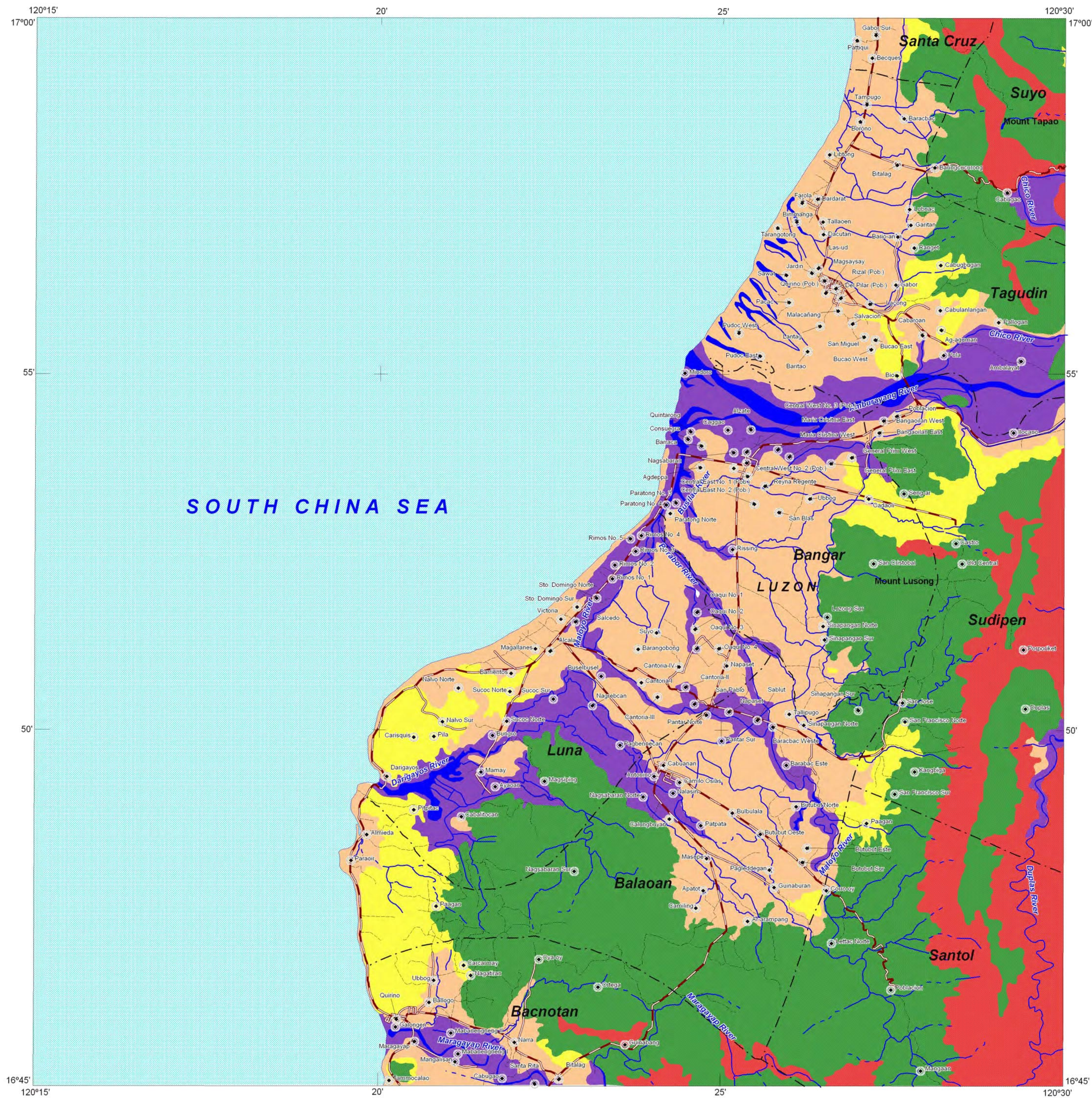
Data Sources:
MGB Geohazard Assessment Team
Geological Database and Information Systems Section
Lands Geological Survey Division
Geosciences Division MGB Region I and CAR

Base Map :
Sheet No. 7075 I "Aringay Quadrangle"



DEPARTMENT OF ENVIRONMENT AND NATURAL RESOURCES
MINES AND GEOSCIENCES BUREAU
LANDS GEOLOGICAL SURVEY DIVISION

LANDSLIDE AND FLOOD SUSCEPTIBILITY MAP OF BANGAR QUADRANGLE LA UNION AND ILOCOS SUR PROVINCES, PHILIPPINES



INDEX MAP



LEGEND :

- High susceptibility to landslide**
Areas with high landslide susceptibility rating have active/recent landslides and tension cracks that could directly affect the community. Those with steep slopes and drainages that are prone to landslide damming are also highly susceptible to landslides.
 - Moderate susceptibility to landslide**
Areas with moderate landslide susceptibility rating have inactive/old landslides and tension cracks which are located away from the community. These areas usually have moderate slopes.
 - Low susceptibility to landslide**
Areas with low to gentle slopes and lacking tension cracks have low landslide susceptibility rating.
 - High susceptibility to flooding**
Areas with greater than 1 meter flood height. These areas are usually flooded for several hours during heavy rains; include landforms of topographic lows such as active river channels, abandoned river channels and areas along river banks; also prone to flashfloods.
 - Low to moderate susceptibility to flooding**
Areas with less than 1 meter flood height. These are usually inundated during prolonged and extensive heavy rainfall or extreme weather condition.
- Roads
River
Municipal boundary
Barangay center location



0 1.5 3
kilometers

TRANSVERSE MERCATOR PROJECTION
MAPPING SCALE 1:50,000

GIS Processing :
Lands Geological Survey Division

Data Sources:
MGB Geohazard Assessment Team
Geological Database and Information Systems Section
Lands Geological Survey Division
Geosciences Division MGB Region I

Base Map :
Sheet No. 7076 I "Bangar Quadrangle"

LANDSLIDE AND FLOOD SUSCEPTIBILITY MAP OF SAN FERNANDO QUADRANGLE, LA UNION PROVINCE, PHILIPPINES

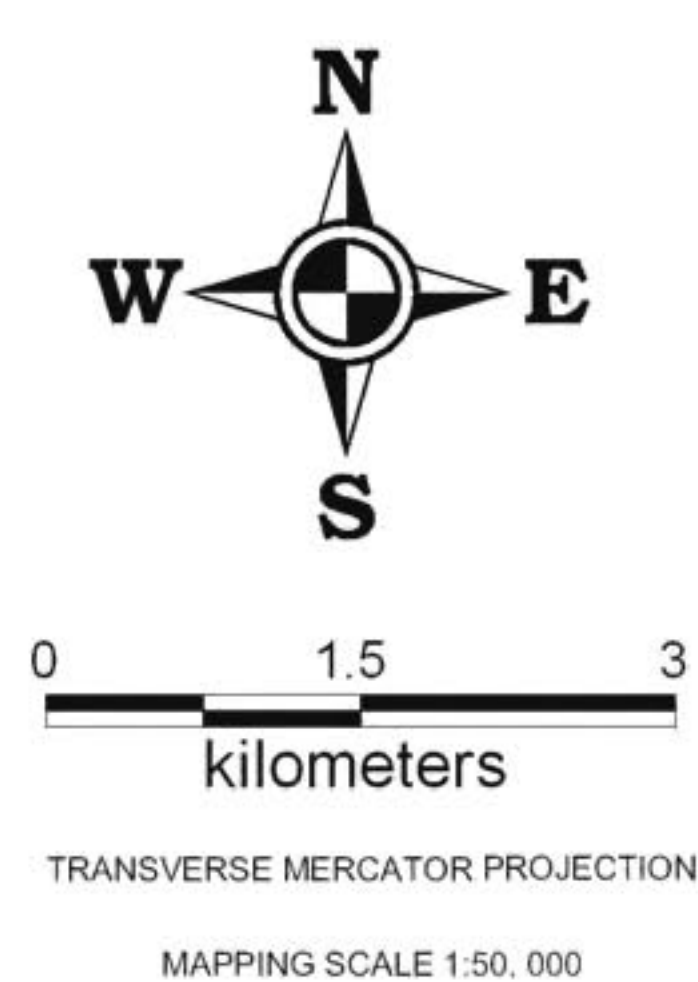


LEGEND :

- High susceptibility to landslide**
Areas with high landslide susceptibility rating have active/recent landslides and tension cracks that would directly affect the community. Those with steep slopes and drainages that are prone to landslide damming are also highly susceptible to landslides.
- Moderate susceptibility to landslide**
Areas with moderate landslide susceptibility rating have inactive/old landslides and tension cracks which are located away from the community. These areas usually have moderate slopes.
- Low susceptibility to landslide**
Areas with low to gentle slopes and lacking tension cracks have low landslide susceptibility rating.
- Possible Landslide Debris Accumulation Zone**
These are areas where landslide debris could accumulate.
- High susceptibility to flooding**
Areas with greater than 1 meter flood height. These areas are usually flooded for several hours during heavy rains; include landforms of topographic lows such as active river channels, abandoned river channels and areas along river banks; also prone to flashfloods.
- Low to moderate susceptibility to flooding**
Areas with less than 1.0 meter flood height. These are usually inundated during prolonged and extensive heavy rainfall or extreme weather condition

Map Symbols:

- Roads (Red line with cross-ticks)
- River (Blue line)
- Municipal boundary (Dashed line)
- Barangay center location (Black dot)



GIS Processing :
Lands Geological Survey Division

Data Sources:
MGB Geohazard Assessment Team
Geological Database and Information Systems Section
Lands Geological Survey Division
Geosciences Division MGB Region I

Base Map :
Sheet No. 7076 II "San Fernando Quadrangle"