



International
Labour
Organization

Migration and Development : state of current debate

Manolo Abella

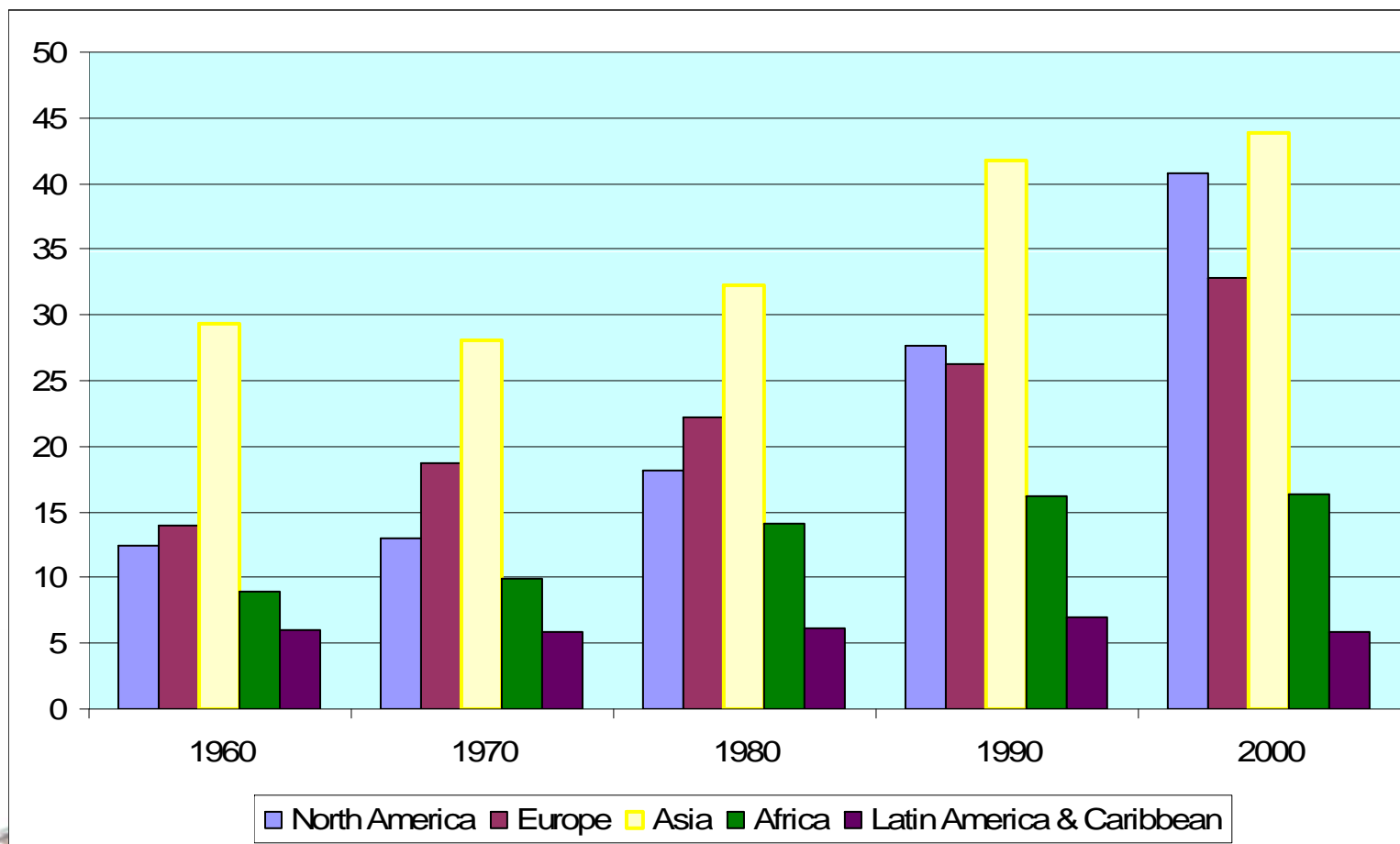
Regional Office for Asia and the Pacific



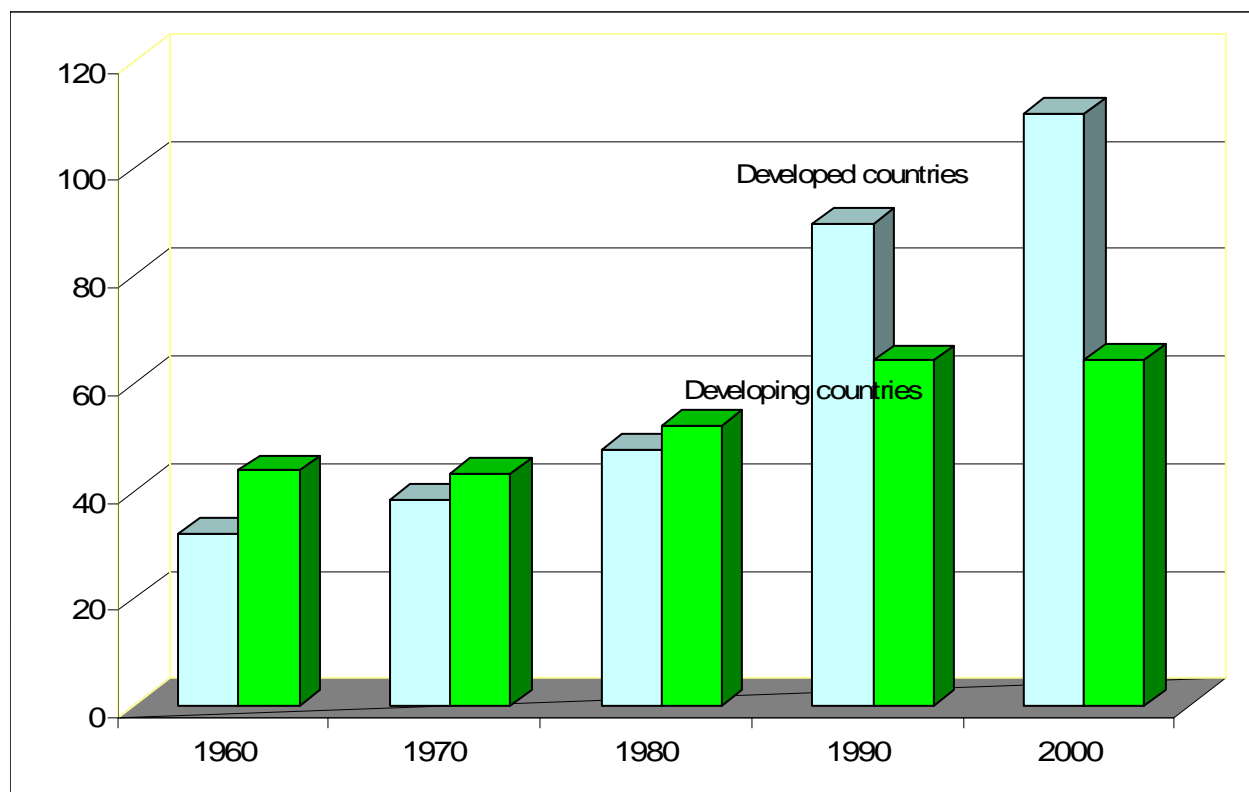
Decent Work for All

ASIAN DECENT WORK DECADE 2006-2015

Growth of migrant populations



Growth of migrant populations in DC and LDC countries

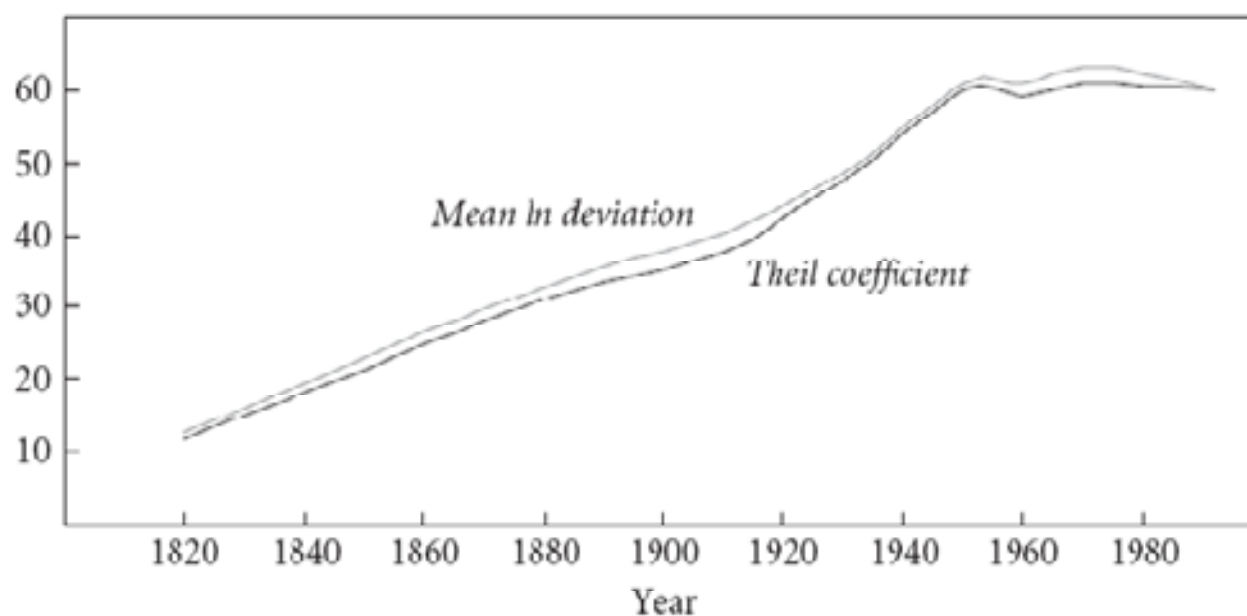




International
Labour
Organisation

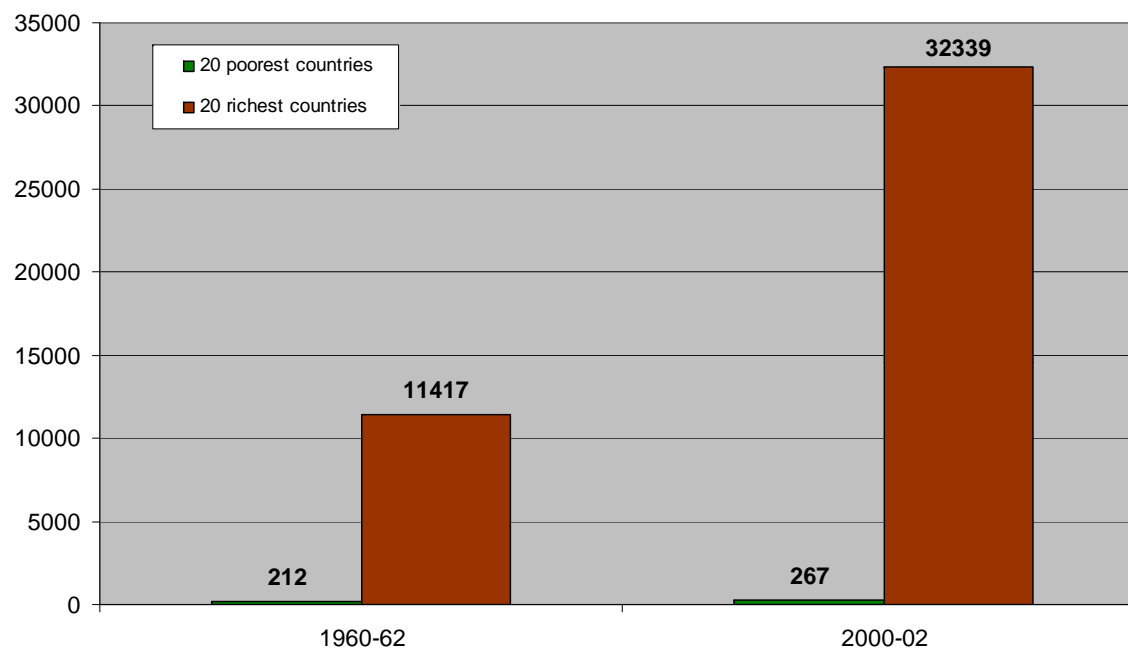
Inequality in incomes over time

Percent of total inequality due to differences



Source: Bourguignon and Morrison 2002.

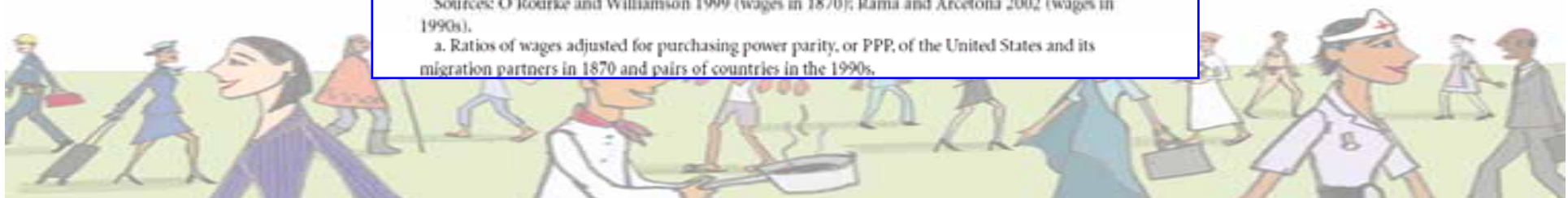
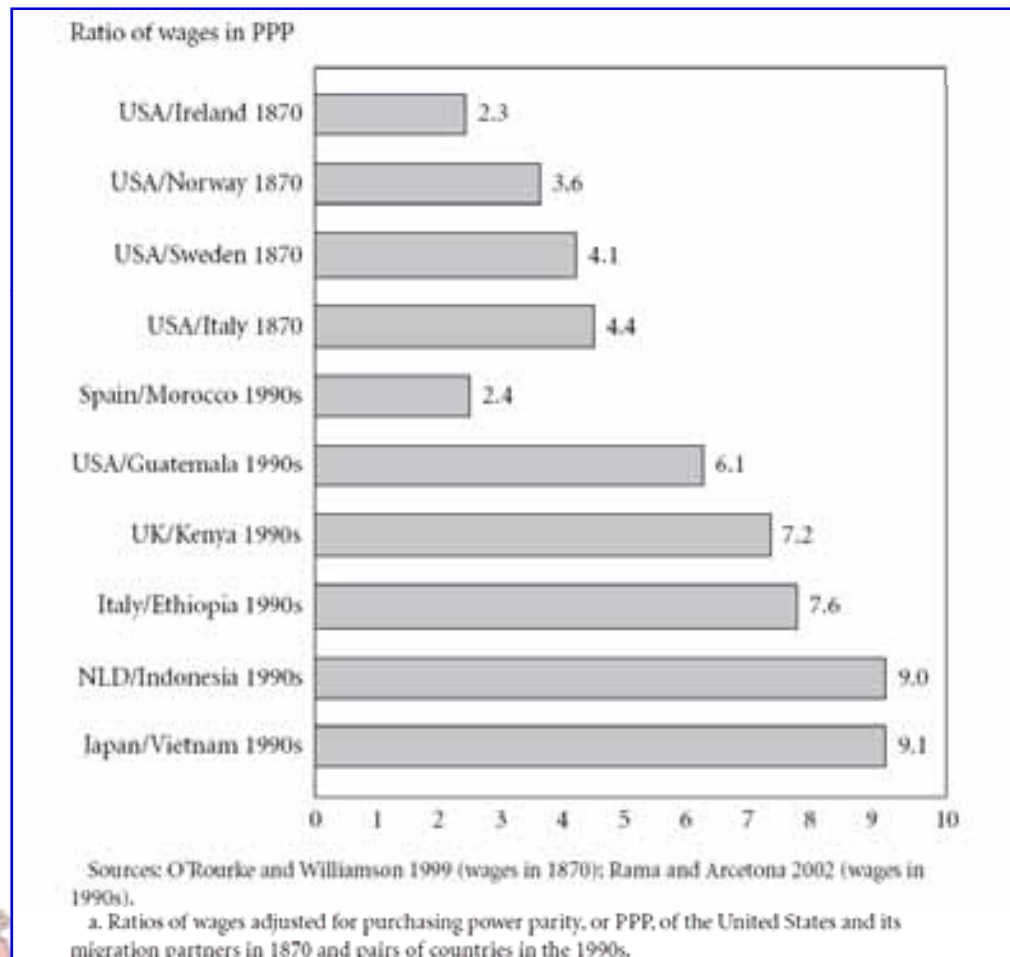


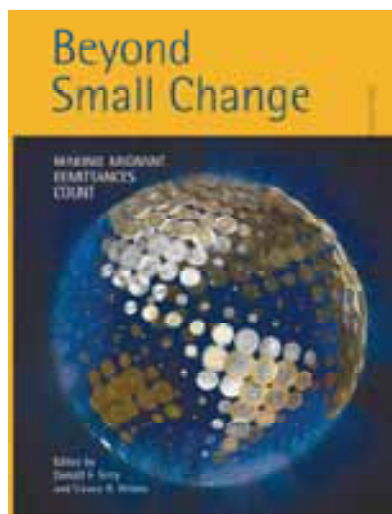


Widening gap between rich and poor countries



Wages of destination:origin countries in earlier migration age and today





AFRICAN UNION

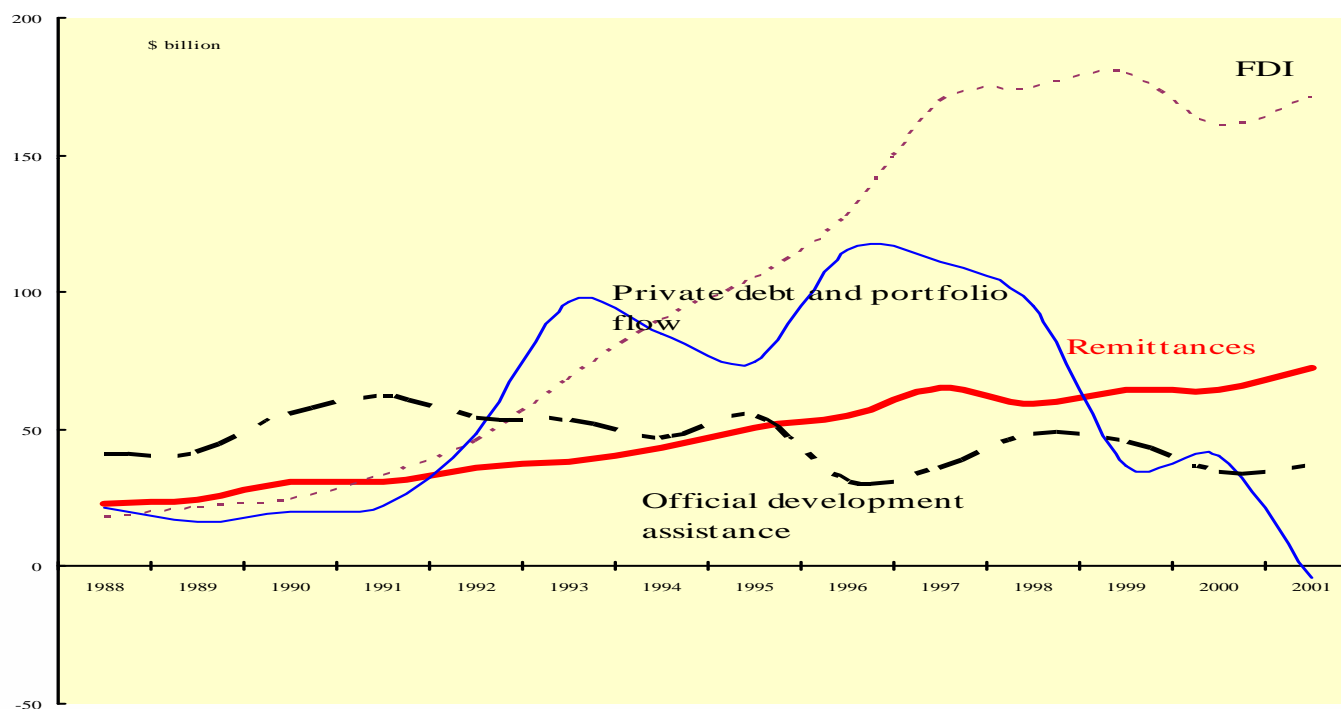


EUROMED

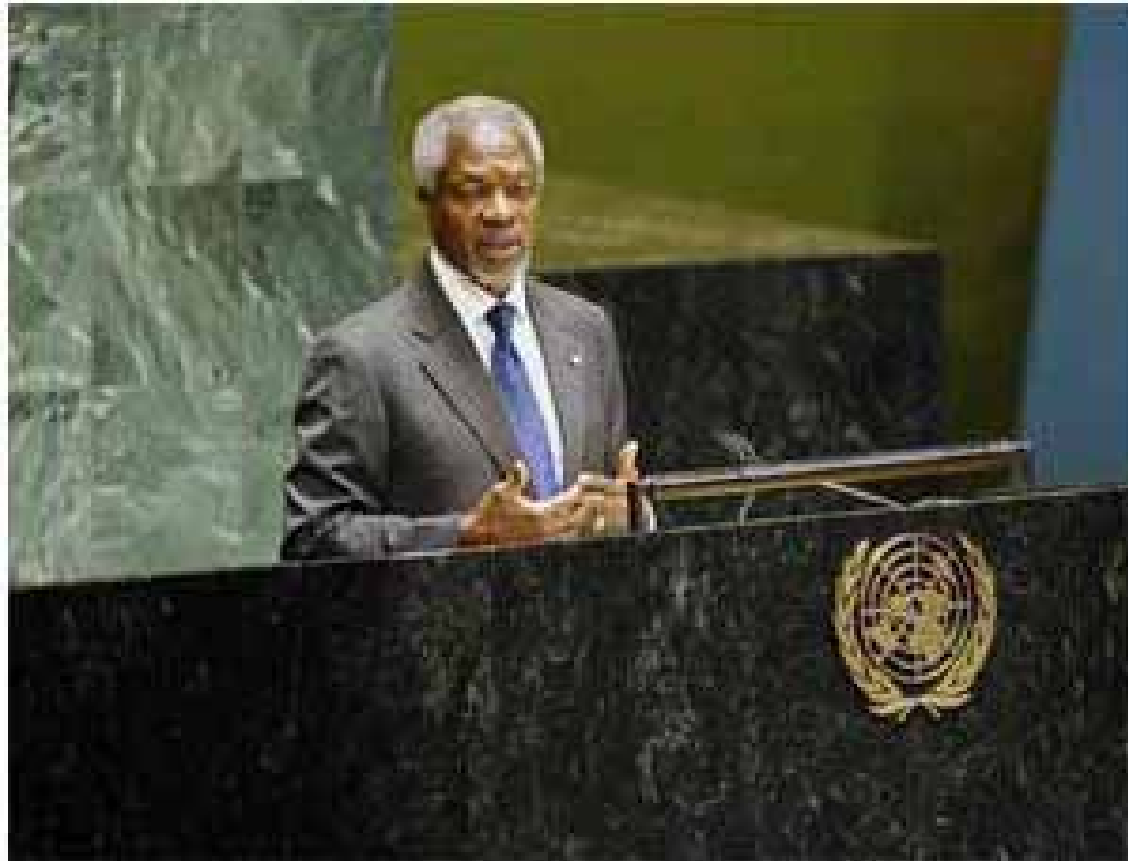


**Global Forum on
MIGRATION & DEVELOPMENT**

World Bank : remittances vis a vis other financial flows



Global interest in making migration a force for development



UN photo/Marco Castro



More and more people are excited about the ways in which migrants can help transform their adopted and their native countries. More and more people understand that governments can cooperate to create triple wins—for migrants, for their countries of origin, and for the societies that receive them.



“International migration should be an integral part of national, regional and global strategies for economic growth, in both the developing and developed world”

Global Commission on International Migration

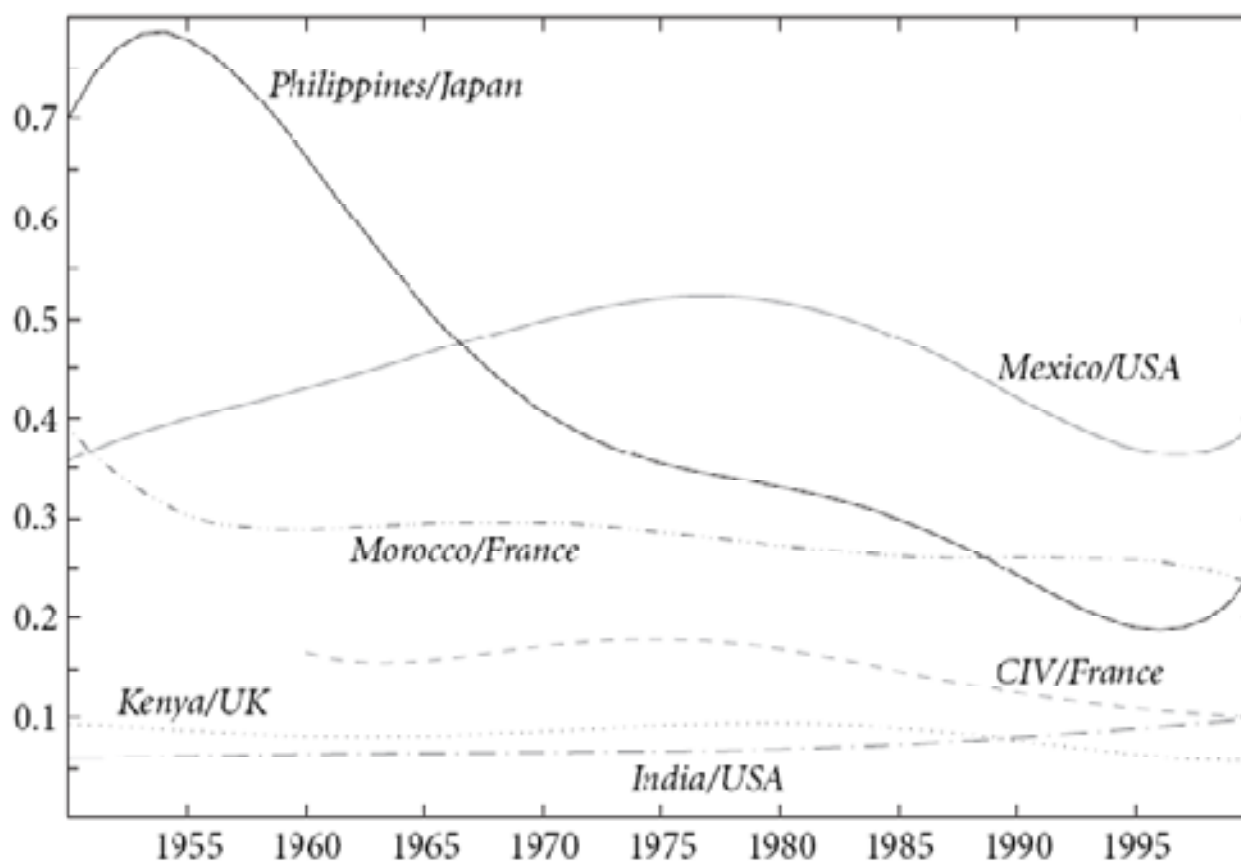


What are the risks?



Evolution of ratio of GDP pc between pairs of countries

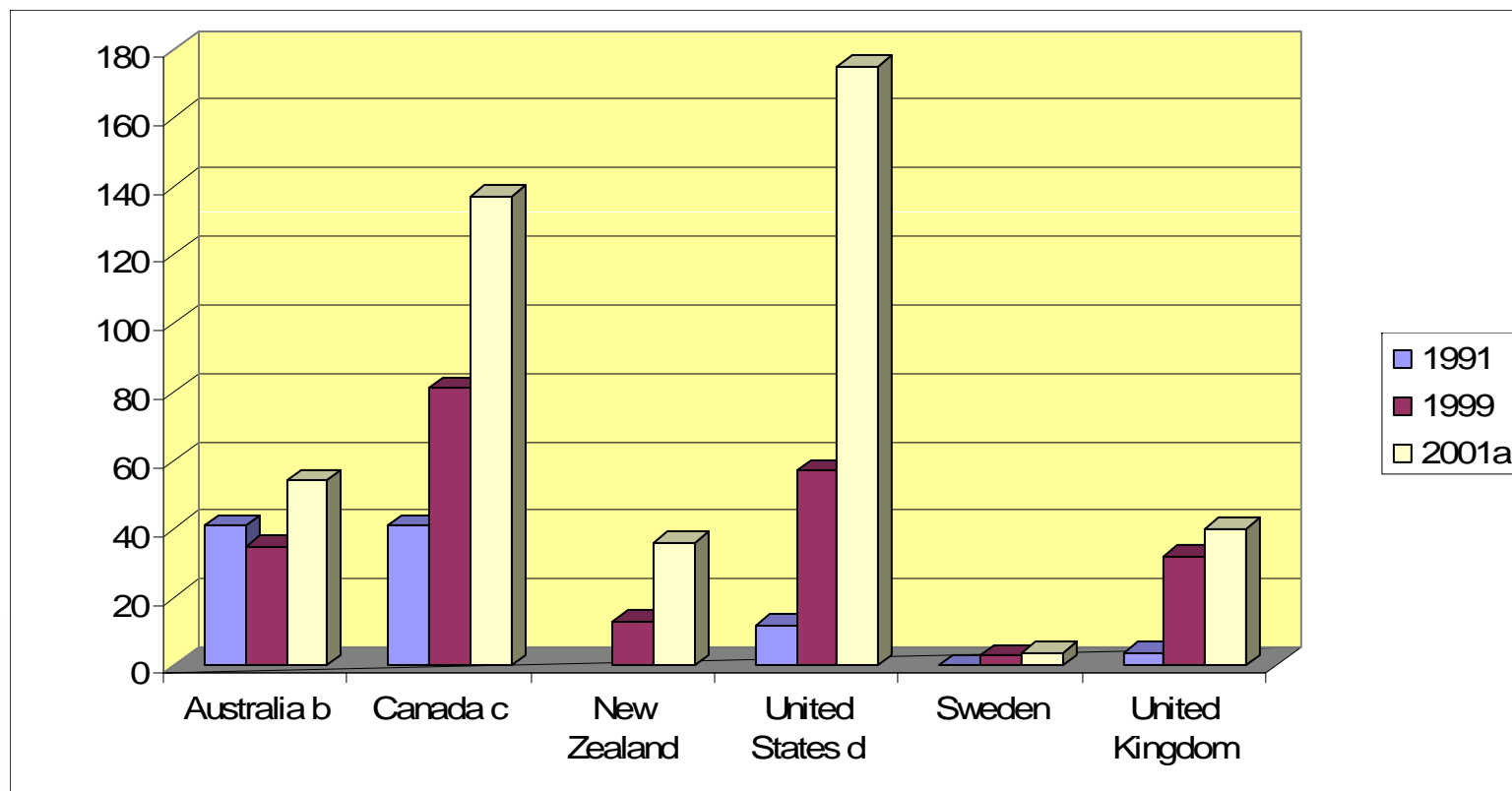
Ratio of GDP per capita, PPP



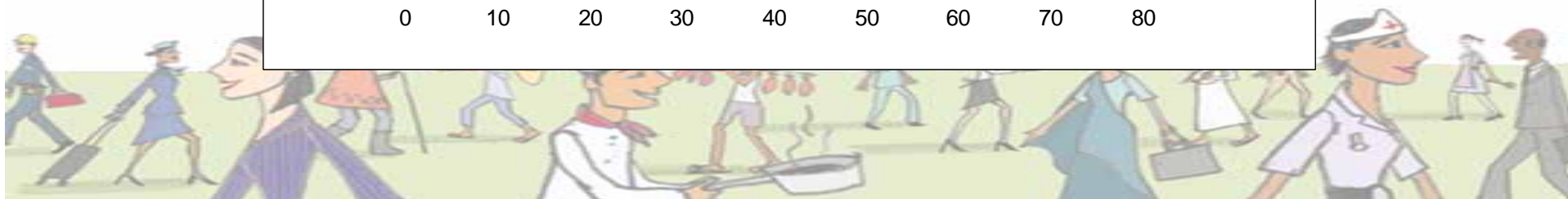
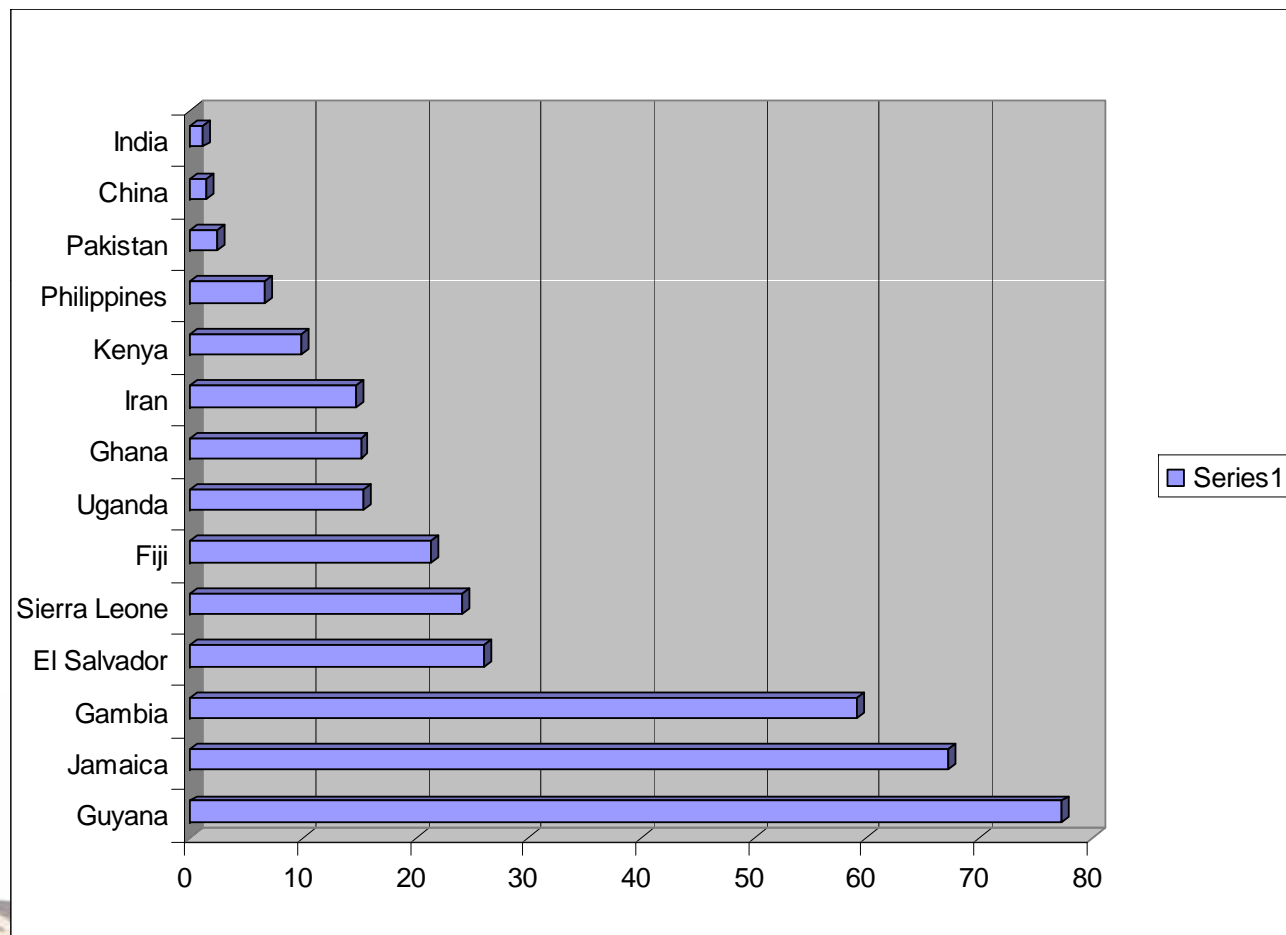


International
Labour
Organisation

Admission of skilled immigrants

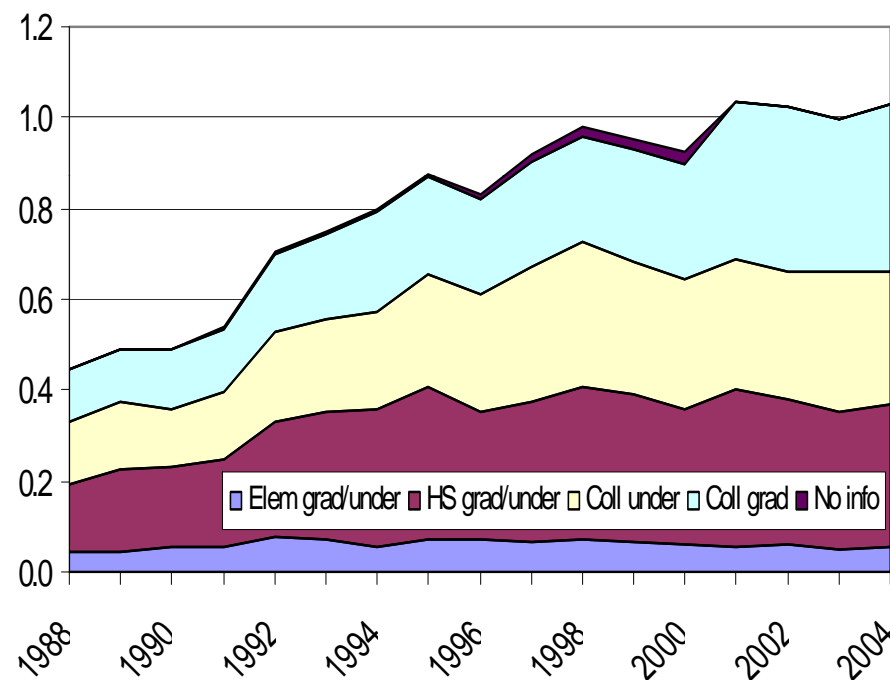


Percent of developing country highly skilled migrated to US



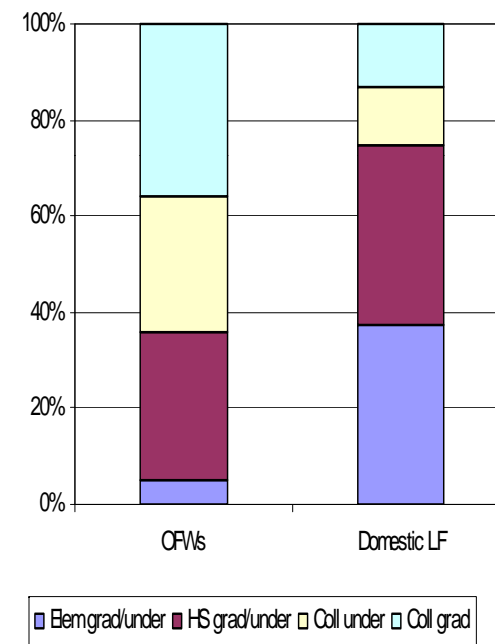
Philippines: Suffering from brain drain?

Figure 3.3. OFWs by education (in millions), 1988-2004

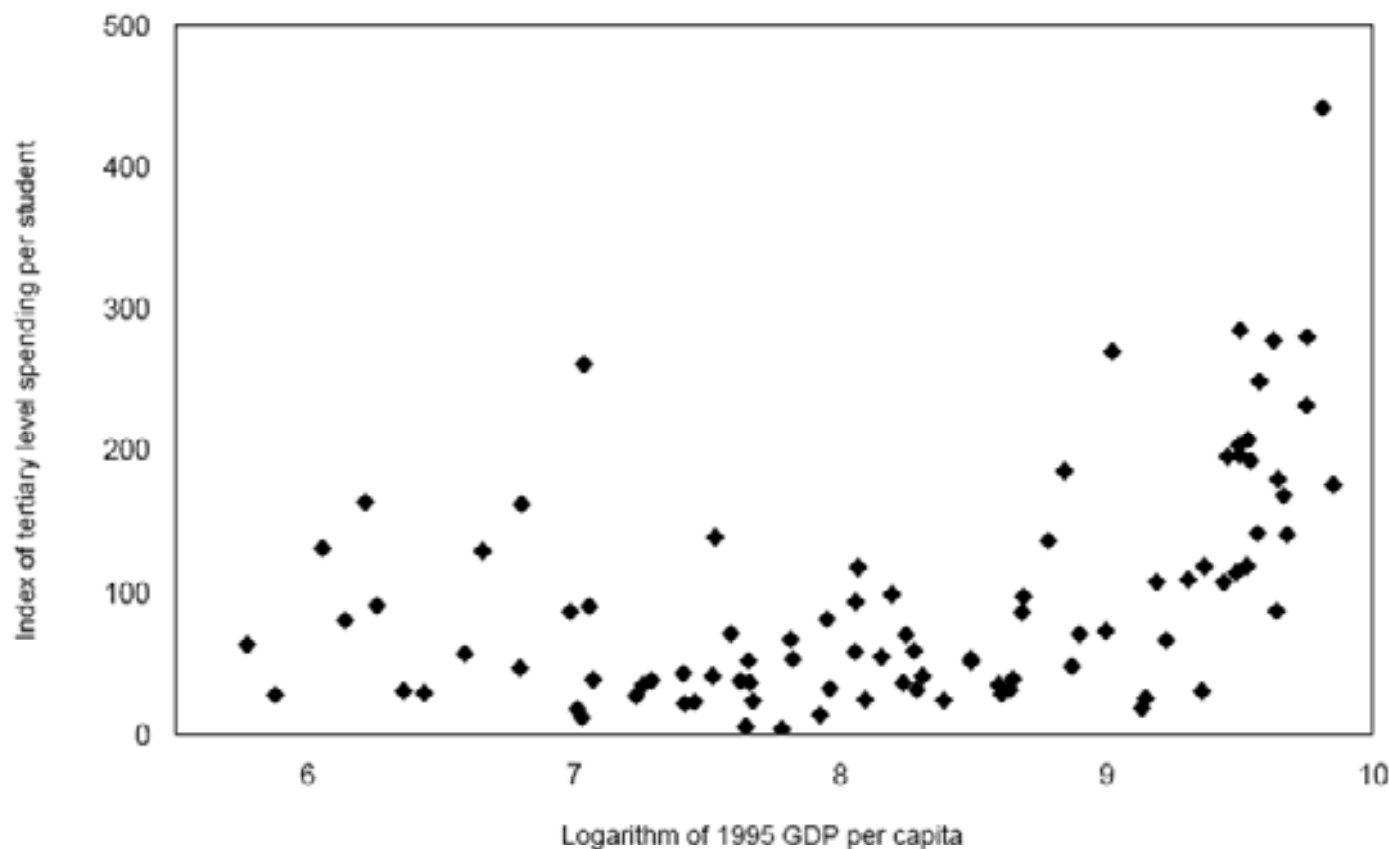


Source: LFS various years.

OFWs vs. Domestic Labour Force, 2004

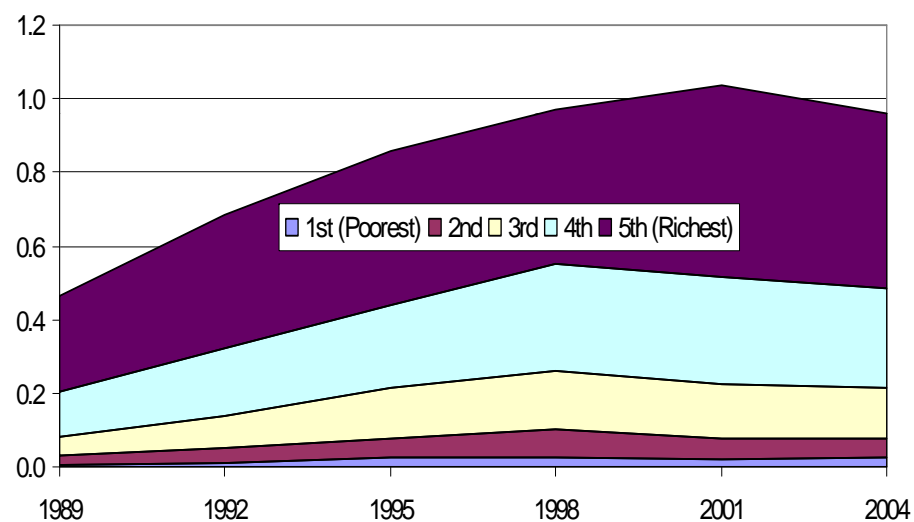


Higher level of spending on higher education in LDCs



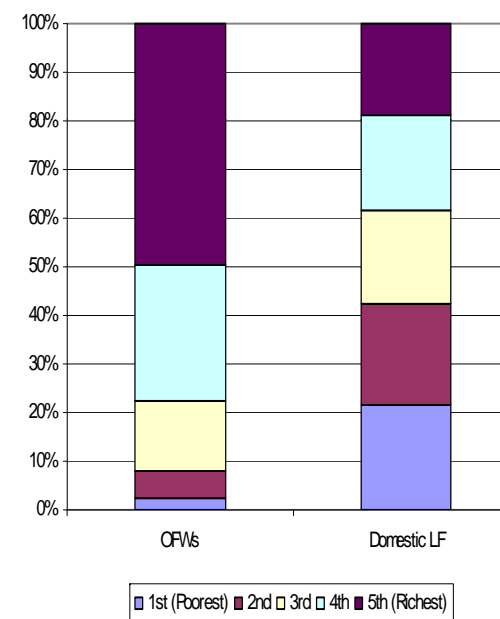
Impact of migration on poverty

Figure 3.4. OFWs by per capita income of family, 1988-2004



Source: LFS various years.

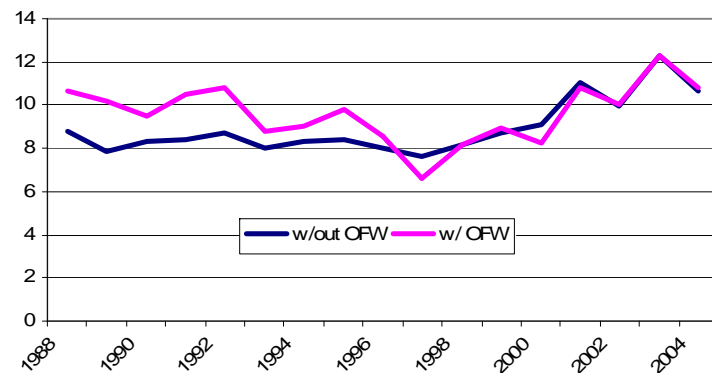
OFWs vs. Domestic Labour Force, 2004



Does migration lead to sloth among household members?

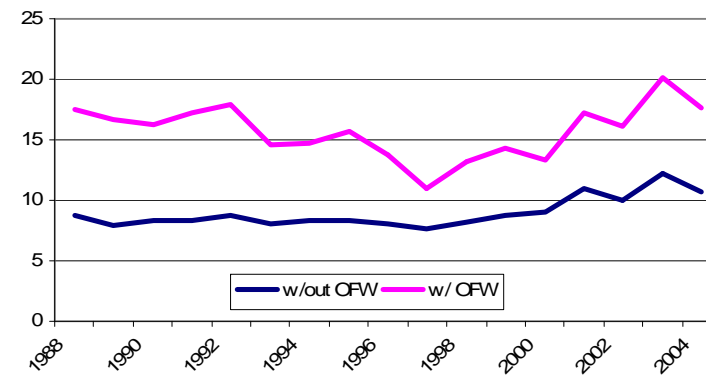
Philippines :

Figure 4.4. Unemployment Rate by Presence of OFW in Household, inc. OFW



Source: LFS 1988-2004; Annex Table 4

Figure 4.5. Unemployment Rate by Presence of OFW in Household, exc. OFW



Source: LFS 1988-2004; Annex Table 4





International
Labour
Organisation

