



IT'S ALL IN THE DETAILS

BCA ANNUAL REPORT 2007/08

CONTENTS

03 Mission and Vision | 04 Our Strategic Thrusts | 05 Corporate Governance
13 Together, Our Achievements | 21 Board Of Directors | 27 Senior Management
32 Organisation Structure | 34 Safe Built Environment | 42 Quality Built Environment
48 Sustainable Built Environment | 58 Friendly Built Environment | 66 Transforming the Industry
78 Building Partnerships | 88 Financial Report (CD-ROM)



MISSION AND VISION

Our mission is to shape a safe, high quality, sustainable and friendly built environment.

Safety, Quality, Sustainability and User-Friendliness are four key areas where BCA has a very significant influence on the built environment and they distinguish Singapore's built environment from those of other cities. Hence, our vision is to have "the best built environment for Singapore, our distinctive global city".

CORPORATE GOVERNANCE

BCA is committed to good corporate governance. We have put in place a Code of Corporate Governance to formalise the principles and practices of governance within BCA to ensure accountability, responsibility and transparency.

BOARD MEMBERS

The Board currently comprises 13 members. All are non-executive members, except Dr John Keung who is BCA's Chief Executive Officer (CEO). The Board comprises representatives from the industry, academia and Ministries. The diverse representation of the Board provides an appropriate range of experience, skills, knowledge and perspectives to enable it to play an active role in guiding BCA to achieve its mission and vision.

The Chairman provides strategic leadership and guidance to the Management of BCA, and ensures that discussions are fairly, objectively and independently conducted.

The Board meets at least six times a year to evaluate, approve and monitor the plans and budgets of BCA. It also oversees the work and performance of Management and assesses the financial health of BCA. The BCA Act empowers the Board to form committees from among its members to support the work of the Board.

FINANCE AND AUDIT

Internal Controls

The Board ensures that the Management maintains a sound system of internal controls to safeguard the interests and assets of BCA. It also ensures that a review of BCA's material internal controls, including financial, operational and compliance controls, and risk management, is conducted annually through internal and/or external audits according to the direction of the Finance and Audit Committee.

Finance and Audit Committee

The Finance and Audit Committee reviews the audited financial statements with the external auditors, and reviews audit plans and observations of the external and internal auditors. It also ensures that the Management takes appropriate action for audit observations and Finance and Audit Committee's recommendations. All the members in the Finance and Audit Committee are non-executive members.

IT'S THE SAFETY DETAILS YOU CAN'T SEE THAT
MAKE THE DIFFERENCE...



QUALITY WORKMANSHIP
SHOWS IN THE DETAILS...



BUILDING THE GREEN DETAILS AND
CREATING A SUSTAINABLE FUTURE...



DETAILED DESIGNS IN
CREATING ACCESSIBILITY FOR ALL...



TOGETHER, OUR ACHIEVEMENTS...



BESIDES TAKING IMMEDIATE STEPS TO EASE THE INDUSTRY OUT OF A CONSTRUCTION MATERIALS AND RESOURCES SUPPLY CRUNCH, WE PUT IN PLACE LONG TERM MEASURES TO UPGRADE THE INDUSTRY'S CAPABILITIES. WE ALSO RAISED PUBLIC AWARENESS ABOUT THE INDUSTRY AND REACHED OUT TO OUR STAKEHOLDERS TO FOSTER CLOSER WORKING TIES.

2007 was an extraordinary year for the construction industry. It was a year which BCA, together with our industry partners, broke new grounds and triumphed over seemingly insurmountable challenges.

Besides taking immediate steps to ease the industry out of a construction materials and resources supply crunch, we put in place long term measures to upgrade the industry's capabilities. We also raised public awareness about the industry and reached out to our stakeholders to foster closer working ties.

For the past year, BCA has kept its focus on the following four approaches to upgrade and develop the industry:

1. managing resources
2. enhancing capability and growth
3. developing expertise
4. reaching out

In this message, we would like to look back at the challenges BCA faced in 2007, and how we responded to these challenges.

MANAGING RESOURCES

Land Sand Ban

The ban on the export of land sand and the sudden disruption of granite supply from Indonesia posed major challenges to the construction industry, especially in the midst of many on-going mega projects. Nevertheless, BCA swiftly took the lead by implementing creative solutions and forging strong partnerships across the industry.

Cost Sharing

Other than immediately releasing sand and granite from our strategic stockpiles and opening up new supply sources, BCA took the proactive stance of bringing the industry together to develop a Practice Note on Cost Sharing for on-going projects.

Bearing in mind stakeholder differences and the priorities that various industry players had to put aside to come to a consensus, it was indeed a major achievement for everyone to agree on these cost-sharing arrangements. Ultimately, the resilience of the construction industry was enhanced and strengthened as it went on to register a stellar double-digit annual growth of 46% in 2007 to \$24.5 billion.

Rescheduling Public Projects

With construction demand at an all time high, a spike in construction costs ensued and speedy action was required to curb further increases. In November 2007, BCA announced a number of key measures to ease pressure on resources and mitigate the capacity crunch. Notably, at least \$4.7 billion worth of public works projects were rescheduled to begin in 2010 and beyond.

While the cost issues were paramount, we had nevertheless kept our radar up on our longer term strategic direction of keeping ourselves relevant in the areas of safety, quality, sustainability and friendliness.

ENHANCING CAPABILITY AND GROWTH

Shaping Up for Sustainability

An Inter-Ministerial Committee on Sustainable Development was formed in January 2008 to review policies and chart new strategies for Singapore's future growth and development. This initiative augments well with BCA's drive to shape a sustainable built environment for Singapore.

IN 2005, WHEN THE BCA GREEN MARK SCHEME WAS FIRST LAUNCHED, THERE WERE ONLY 17 GREEN MARK BUILDINGS CERTIFIED ANNUALLY. IN 2007, THIS NUMBER ROSE SIGNIFICANTLY TO 129, WITH ANOTHER 200 PROJECTS CURRENTLY AWAITING GREEN MARK ASSESSMENT.

For a start, BCA rolled out initiatives to encourage sustainable construction with the Sustainable Construction Campaign in April 2007. This was followed by the formation of the Sustainable Construction (SC) Steering Group, a tripartite body comprising the public sector, the private sector and the tertiary research institutions. The SC Steering Group focuses on two key aspects: designing for sustainable construction and using recycled materials in construction.

Shaping sustainable development policies for the future has been the key to our continued success in ensuring sustainability for the built environment. To drive home the critical message of ensuring environmental sustainability, we amended the Building Control Act to include the promotion of environmentally sustainable development.

Going Green

BCA's efforts to promote environmentally friendly buildings are bearing fruit. In 2005, when the BCA Green Mark Scheme was first launched, there were only 17 green mark buildings certified annually. In 2007, the total number of green buildings rose significantly to 129, with another 200 projects currently awaiting Green Mark assessment. It is also heartening to note our in-depth involvement in developing green building standards for the iconic Eco-City in Tianjin - another milestone for us.

Enhancing the Accessibility Factor

Whilst sustainability was high on our agenda in 2007, much work had been done in the core areas of friendliness, safety and quality as well.

The scope of the Code on Accessibility in the Built Environment was expanded to cover not only buildings, but also other facilities such as parks, open spaces, transport hubs, and bus shelters. We also participated in several roving exhibitions in the heartlands to raise the awareness of Universal Design as a concept to bring about a more inclusive society.

Safety as Cornerstone

Huge strides were made to enhance safety standards in the built environment. An International Panel of Experts was formed to assist BCA in reviewing the building control framework in an objective and systematic manner. Thanks to the panel's expertise and feedback from the industry, amendments were made to the Building Control Regulations which would ensure higher safety standards throughout the building industry and a more robust building control system.

Quality Homes for Quality Lives

Ensuring quality homes that rise above the ever-increasing expectations of home owners remains one of our key pillars of development.

To ramp up industry expertise in quality, BCA introduced customised training for builders, which targets different levels of site management, project management, site engineers, and site supervisors to focus on quality matters relevant to their job scope.

Through the BCA Quality Mark, we see the fulfilment of Singaporeans' aspirations for a place that is not only safe, but also comfortable to work, live, learn and play in.

DEVELOPING EXPERTISE

Empowering with Knowledge

The adage — knowledge is power — is extremely apt in the context of the building and construction industry. BCA commits itself in helping the industry develop key areas of expertise to meet rising aspirations of homeowners and users of our built environment.

Several professional certification courses were introduced in 2007. These courses include those leading to qualifications as Certified CONQUAS/ Quality Mark Managers, Green Mark Managers/ Professionals, Energy Managers and Structural Steel Engineers/ Supervisors.

Equipping with Technology

BCA's commitment in enhancing the industry's growth and helping industry players stay competitive is evident in the increasing capital investment that firms put into technologically advanced construction equipment. Since 2004, there was a threefold jump in the number of applications for the Investment Allowance Scheme (IAS) and a six-fold increase in terms of investment value involved to \$60 million in 2007. IAS is one of several financial assistance programmes that BCA is administering for the government to help develop a technologically advanced construction industry.

REACHING OUT

Connecting Industry Leaders

BCA must play a leading role if we want to realise our vision of a green building movement in Singapore. In this context, BCA organised the Inaugural Breakfast Talk for CEOs in February 2008, with Minister for National Development, Mr. Mah Bow Tan, as the Guest of Honour and Mr Kevin Hydes, Chair of the World Green Building Council, as the keynote speaker. These discussions signalled the start of a series of dialogues between the private sector and internationally renowned experts to promote the business case and corporate social responsibility for green buildings. More significantly, they served as the platform for the public and private sectors to work together towards achieving sustainable development for Singapore.

Engaging the Industry for a Pro-Enterprise Regulatory Framework

A series of eight engagement sessions with the private sector, including architects, builders, engineers, and developers, were held to discuss and improve the pro-enterprise nature of our regulations. These discussions acted as effective bridges to a common understanding of the rationale behind our policies and regulations. They also served as valuable feedback channels for the people at the forefront of the construction industry to develop a pro-enterprise regulatory framework.

Involving the Public; Inspiring the Young

To create a people-centric demand for sustainable development, we need to engage and involve the public. In this respect, the BCA Gallery and the Sensory Garden, opened in April 2008, served as critical components in educating the public on the important role the building industry plays in shaping our built environment.

EVERY TRIUMPH OVER A
CHALLENGE AND EVERY
MILESTONE ACHIEVED WILL BE A
STEP CLOSER TO REALISING OUR
JOINT MISSION WITH THE
INDUSTRY TO SHAPE A SAFE, HIGH
QUALITY, SUSTAINABLE AND
FRIENDLY BUILT ENVIRONMENT
FOR SINGAPORE.

ENERGISING THE ORGANISATION

Inculcating Innovation

It is a testament to our staff's creativity, commitment, and can-do attitude that BCA has been able to thrive in adversity. Indeed, it is through major crises that we see opportunities for innovative solutions. It was fitting that BCA achieved the Innovation Class certification in February 2008 as a testimony of the innovative organisational culture prevalent in the organisation. We will continue to inculcate and strengthen this innovative spirit in BCA.

Internalising Core Values

All of us at BCA were also actively involved in re-creating our core values through a series of staff engagement sessions. The following core values for BCA were formalised: 'We Care', 'We Dare to Dream' and 'We Can Do'. The next step is to translate these core values into action through our daily interaction with stakeholders, customers, and the community.

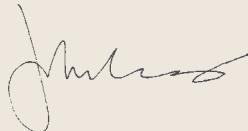
CONCLUSION

Adversity is Opportunity

While we pat ourselves on the back for a job well-done in 2007, we also intend to raise the benchmark for excellence in FY2008. Going forward, with courage and commitment, we will be able to turn every adversity into opportunity. Indeed, every triumph over a challenge and every milestone achieved will be a step closer to realising our joint mission with the industry to shape a safe, high quality, sustainable and friendly built environment for Singapore.



Quek See Tiat
Chairman



Dr John Keung
Chief Executive Officer

BOARD OF DIRECTORS

Mr Quek See Tiat

*Chairman
Building and Construction Authority
Partner & Deputy Chairman
PricewaterhouseCoopers, Singapore*



Dr John Keung

*Chief Executive Officer
Building and Construction Authority*



Mr Pek Lian Guan
Managing Director
Tiong Seng Contractors Pte Ltd



Dr Teo Ho Pin
Mayor of North West District
North West Community Development Council



Mr Lee Chuan Seng*Chairman**Beca Carter Hollings & Ferner (SEA) Pte Ltd***Mr Lee Kut Cheung***Managing Director**RSP Architects Planners & Engineers (Pte) Ltd*

Mr Tan Peng Yam
Deputy Chief Executive (Technology)
Defence Science & Technology Agency



Mr Lim Ee Seng
Chief Executive Officer
Frasers Centrepoint Limited



Mr Song Wee Ngee
Managing Director
KTP Consultants Pte Ltd



Mr Ho Chee Pong
Director
Private Education Division
Ministry of Education



Mr Cheong Yip Seng
Editorial Advisor
Singapore Press Holdings Ltd



Prof Cheong Hee Kiat
President
SIM University

Mr Frederic Perez
Project Director
Dragages Singapore Pte Ltd



| SENIOR MANAGEMENT

**Dr John Keung (L)***Chief Executive Officer
Building and Construction Authority***Mr Benedict Tan (R)***Managing Director
BCA Academy of the Built Environment*



Mr Ong See Ho (L)
*Deputy Chief Executive Officer
Building Control*

Mr Lam Siew Wah (R)
*Deputy Chief Executive Officer
Industry & Corporate Development*

**Mr Ang Kian Seng (L)**

*Acting Deputy Managing Director
Research
BCA Academy of the Built Environment*

Mr Chin Chi Leong (C)

*Director
Building Plan and Management Division*

Mr Ong Chan Leng (R)

*Director
Special Functions Division*



Mr Chew Keat Chuan (L)
Acting Director
Building Engineering Division

Mr Tan Tian Chong (C)
Director
Technology Development Division

Mr Cheng Tai Fatt (R)
Director
Corporate Development Division
Deputy Managing Director
Corporate Services
BCA Academy of the Built Environment

**Mr William Tan Yong Keh (L)**

*Director
Business Development Division*

Mr Neo Choon Keong (C)

*Acting Director
Manpower and Strategic Policy Division*

Mr Wong Wai Ching (R)

*Deputy Managing Director
Training & Professional Development
BCA Academy of the Built Environment*

ORGANISATION STRUCTURE

(with effect from 1 July 2008)







SAFE BUILT ENVIRONMENT

ENHANCING CAPABILITY AND GROWTH

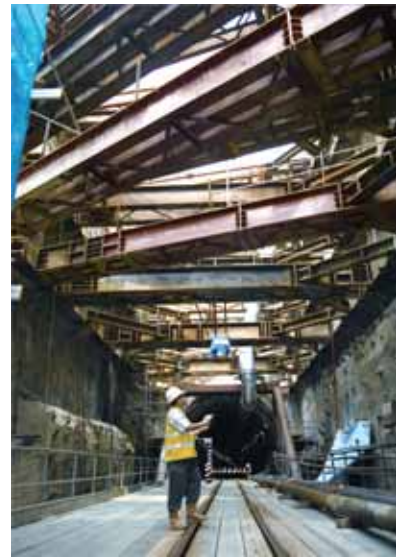
Building Control Act

To enhance standards of safety and professionalism in the construction industry, amendments were made to the Building Control Act in September 2007. In particular, the Act requires all builders to be licensed, and safety standards in geotechnical engineering and site supervision have been enhanced.

IPE on Building Control

This year, BCA formed an International Panel of Experts (IPE) on Building Control, with eminent members from UK, USA and New Zealand, to help BCA review its building control system in Singapore and assess its robustness and adequacy in ensuring public safety in the design, construction and maintenance of buildings.

The IPE found our practices and procedures sufficiently sound and robust and suggested some minor improvements to enhance the building control framework and maintain our high standards of safety. Amendments have been made to the Building Control Regulations which will ensure higher safety standards throughout the building industry and a more robust building control system.



The Building Control Act was amended to enhance safety standards in geotechnical engineering.



BCA formed an International Panel of Experts (IPE) on Building Control to help BCA review its building control system in Singapore.



MR SOH SENG SIONG
DIRECTOR
KTP CONSULTANTS PTE LTD

The new Design and Engineering Safety Excellence Award is an affirmation of the efforts by Qualified Persons in ensuring engineering safety in the construction or maintenance phase of a building project. I am honored to be bestowed with this Award. I am sure that with the Award, more people will be aware of the robust regulatory system BCA has in place to ensure a safe built environment for all.



The upgraded steel roof structures with glass leaf canopies at Changi Airport Terminal Two juxtapose engineering safety with aesthetics.



Real time data is collected when tremors from a distant earthquake are felt.



The Design and Engineering Safety Excellence Award recognises innovative solutions in construction safety issues.

Tremor Monitoring

A pilot project testing a new tremor monitoring system has been successfully implemented by BCA in six private buildings. The new monitoring system has helped to provide a better scientific understanding of the buildings' response to tremors and BCA plans to install the system in another 30 buildings of various types across Singapore. The recorded intensity of tremors emanating from distant earthquakes would help to improve the efficiency of tremor response operations, in particular to prioritise inspection of affected buildings.

DEVELOPING EXPERTISE

Structural Inspections

BCA ensures that buildings are structurally safe for occupation through a mandatory periodic structural inspection scheme. To guide professional engineers in conducting comprehensive safety checks, BCA reviewed and enhanced the guidelines on structural inspections such as inspections of critical structures, slope protection structures, termite-infested timber structures, safety barriers, and structures exposed to aggressive environments.

Safety in Design and Engineering Award

Part of the work of developing expertise includes according recognition of extraordinary achievements. The new Design and Engineering Safety Excellence Award was launched by BCA in October 2007, as part of BCA's continuing efforts to ensure high safety standards, and inculcate a strong culture of safety in the construction industry. The Award recognises engineers and their project teams who have devised and adopted innovative measures and solutions to overcome challenges in ensuring safety in building and civil engineering projects.

REACHING OUT

Importance of Maintaining Slope Stability

Land and property owners play an important role in maintaining the stability of slopes and slope protection structures within their land boundaries. BCA requires the professional engineers to inspect the slope protection structures during mandatory inspections. Government agencies were also advised to engage specialist geotechnical consultants to undertake slope stability risk assessments. Furthermore, advisory notes were issued to remind more than 1000 house owners of landed properties to conduct regular slope inspection and maintenance.

During slope failure incidents, BCA guided the affected house owners in taking immediate measures to obviate danger. BCA also initiated briefing sessions to guide the government agencies to carry out regular inspections and maintenance programmes of their slopes, implement mitigation and protective measures, including instrumentation monitoring of slope stability.

Raising Awareness

A series of communication and information programmes have been introduced to educate the public on specific topics like earth tremors. These include issuing guidelines on tremor standard operating procedures to 319 private building owners, and distributing posters on 'What to do during tremors' to 688 building owners and schools. 24-hour hotlines were also introduced to handle general enquiries related to tremors and to give advice to public and building owners during tremors.



BCA initiates briefing sessions to guide government agencies to carry out regular inspection and maintenance of their slopes.



Posters on what to do during tremors were distributed to building owners and schools to raise awareness.

FY07 KEY STATISTICS SAFE BUILT ENVIRONMENT

¥ **8,534** structural plans approved

¥ **3,826** building plan submissions approved

¥ **2,557** site inspections conducted

¥ **20** public and transit shelters audited

¥ Served **4,580** notices on owners of buildings for periodic structural inspections

¥ **63** orders served on dangerous buildings, **27** closure orders to vacate unsafe buildings

¥ **41** unauthorised structures regularised and **103** demolished

¥ **3,788** civil defence shelter plans approved

¥ **13,600** household and storey shelters commissioned

¥ **1,098** Temporary Occupation Permits and **2,352** Certificates of Statutory Completion issued

¥ **193** notices served for illegal advertisement signs



QUALITY BUILT ENVIRONMENT

ENHANCING CAPABILITY AND GROWTH

Quality Workmanship

BCA's Construction Quality Assessment System (CONQUAS) and Quality Mark for Good Workmanship (QM) Scheme have continued to fuel significant improvements in industry quality standards. These improvements have led to higher workmanship standards and better quality of the built environment, reaching an average high score of 81.1 points under the CONQUAS Scheme. In FY2007, CONQUAS was applied to 106 projects with a total contract value of \$3.2 billion.

For the year under review, another five developers joined the QM Scheme, bringing the total number of participating developers to 28 since the scheme's inception. Almost 21,000 residential units have committed to the QM Scheme since its introduction in 2002.

DEVELOPING EXPERTISE

Quality Training Revamp

To ramp up industry expertise in quality, CONQUAS training has been revamped to cater to the differing needs of developers, consultants, and builders. In addition, BCA has introduced customised training for builders, which specifically targets different levels of site management, project management, site engineers, and site supervisors to focus on matters relevant to their job scope. In addition, the pool of builders trained in Quality Mark has also grown steadily to 42 since QM was launched in 2002.



The number of Quality Mark residential units has increased significantly over the years.



A BCA officer using the CONQUAS Rod to detect hollowness beneath a tiled surface.



MR CHUA HENG HAI

RESIDENT OF BUTTERWORTH 33,
CITY DEVELOPMENTS LTD

I have found Quality Mark to be a differentiating factor when searching for my dream house. It is the mark of quality and workmanship for homes. With the Quality Mark, I can be assured that the home I've chosen is indeed a comfortable and safe haven.

CONQUAS/QM Manager Scheme

The Certified Quality Mark/CONQUAS Supervisor and Manager Schemes were developed to build up a pool of CONQUAS/QM specialists to deliver high quality projects through a structured recognition framework. In particular, the Certified Quality Mark/CONQUAS Manager course was launched in January 2007 to equip engineers and project managers with the knowledge, skills, and strategies to implement systems to achieve higher QM/CONQUAS scores. The schemes are instrumental in fostering industry capability in quality developments to meet the rising aspirations of homeowners for quality homes.

REACHING OUT

Joint Seminars with REDAS

In our constant efforts to introduce best practices and raise quality awareness, BCA works closely with the Real Estate Developers Association of Singapore (REDAS) to organise joint seminars on building quality. The aim is to enhance professionalism among industry players and add value to the real estate industry in Singapore. In 2007, the BCA-REDAS Quality Seminars focused on achieving quality excellence through the Quality Mark Scheme, proper materials selection as well as detailing and service quality.

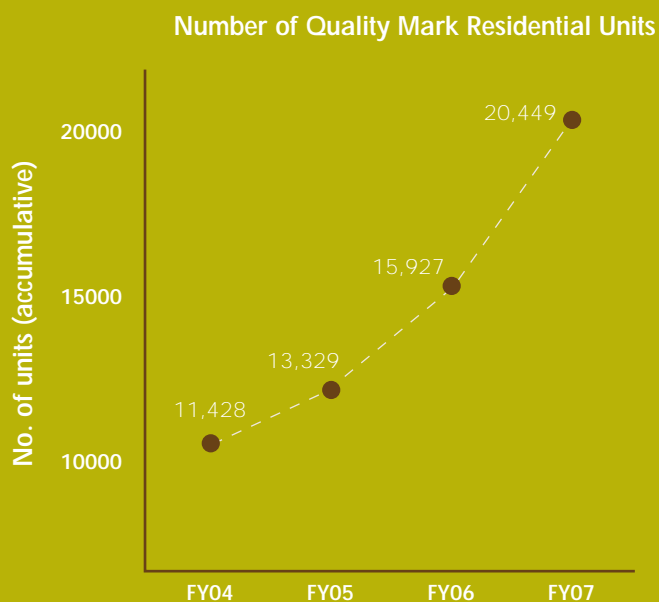


Special courses were launched to equip engineers and project managers with the expertise to achieve higher Quality Mark or CONQUAS scores.



A Quality Mark home of refined workmanship enriches the quality of life for homeowners.

FY07 KEY STATISTICS QUALITY BUILT ENVIRONMENT



¥ Average CONQUAS score achieved: **81.1**

¥ **80** Quality Managers and Supervisors trained

¥ **191** personnel trained under the customised CONQUAS training for builders

¥ **8** Awards and **4** Merit certificates given out for Construction Excellence



embrace the world at Marina Bay

entertained around the bay

Singapore Expo

Lakeside

New Recreational Playground with Marina Bay Sands

SUSTAINABLE BUILT ENVIRONMENT

ENHANCING CAPABILITY AND GROWTH

Green Buildings Legislation

The Green Mark Scheme and the BCA Green Building Masterplan have paved the way for our industry to be equipped with the know-how and capability to achieve a more sustainable built environment.

Attaining a critical mass is crucial in the Green Building Movement in order to bring down costs and reap more substantial savings. To proliferate the number of green buildings in Singapore, BCA introduced the new mandated minimum environmental sustainability standard for buildings. The new standard, which is equivalent to the certified level of the BCA Green Mark Scheme, came into effect on 15 April 2008 and applies to new buildings and existing buildings undergoing major retrofitting works, which have a gross floor area of 2000 square metres and more.

Green Mark Incentive Scheme

The Green Mark Incentive Scheme provides the industry with financial encouragement to strive for higher Green Mark ratings of Gold and above. During the year, \$2.7 million was disbursed to 15 projects.

Build Expertise in Sustainability Solutions

To develop the industry's expertise in building solutions for the future, the Centre for Building Research was established at the BCA Academy in mid 2007 to focus on various R&D work. The centre's guiding principle is to accelerate the transfer of technology from research laboratories to the industry. Efforts had been taken to build expertise in the domain of sustainability research — mainly in the area of construction materials and green building technologies.



Ocean Financial Centre -
Green Mark Platinum Award
winner.



City Developments Limited
project, Shelford Suites gets
the 'Green Mark Gold^{plus}
Award.



To be completed in 2009, the Zero Energy Building will serve as a test-bed platform for green building design features and technologies.



BCA has partnered with various government agencies and private organisations to test the usage of recycled aggregates and other waste materials in construction.

Zero Energy Building

BCA is developing the Zero Energy Building (ZEB), a flagship R&D project under our Green Building Masterplan to serve as a test-bed platform for green building design features and technologies.

When completed in 2009, the ZEB will be a showcase for the industry to emulate and adopt green technologies such as single coil twin-fan air-conditioning system, advanced daylighting systems, personalised ventilation, passive design and rooftop greenery. These innovative features will reduce ZEB's energy demand by 60% to 65%, with the balance supplied by solar energy through photovoltaics. The ZEB will also test-bed the use of heat generated by solar chimneys to promote a stack effect for better air circulation for non air-conditioned school classrooms and halls.

Facilitating Sustainable Construction

BCA developed the Sustainable Construction Masterplan in 2007 to promote eco-friendly construction and to enhance the resilience of the local building and construction industry. This Masterplan is spearheaded by the Sustainable Construction Steering Group led by BCA, with participation from various public agencies, research establishments, and industry associations.

Recycling for Construction

A Recycling Work Group was formed to enhance recycling efforts in the construction industry. It is headed by the Centre for Building Research @ BCA Academy, in joint co-operation with the Waste Management and Recycling Association of Singapore (WMRAS), with participation from other public agencies and industry associations. BCA also partnered with government agencies (HDB, LTA, MOE) and private organisations to test and accept usage of recycled aggregates and other waste materials in construction.

DEVELOPING EXPERTISE

Sustainable Construction Guide Books

As part of the Sustainable Construction Masterplan, various publications were compiled and published to guide the industry and ease their conversion to sustainable construction methods:

- ¥ A design guideline on the use of steel manufactured to non-British standards to offer designers more flexibility in the choice of steel,
- ¥ A design guideline on the use of high-strength concrete to encourage more efficient use of concrete in design, and
- ¥ A Fire Protection and Performance-based Fire Engineering Guide to address concerns on the level of protection required for alternative construction materials.

Photovoltaic Handbook

The Clean Energy Programme Office was formed in April 2007, jointly led by EDB and BCA, to develop expertise in clean energy strategies. To upgrade and enable the industry to harness photovoltaic technologies, BCA has prepared a Photovoltaic (PV) handbook. The handbook aims to show the industry and homeowners good design practices, planning, procedures and implementation of photovoltaic systems in building developments.

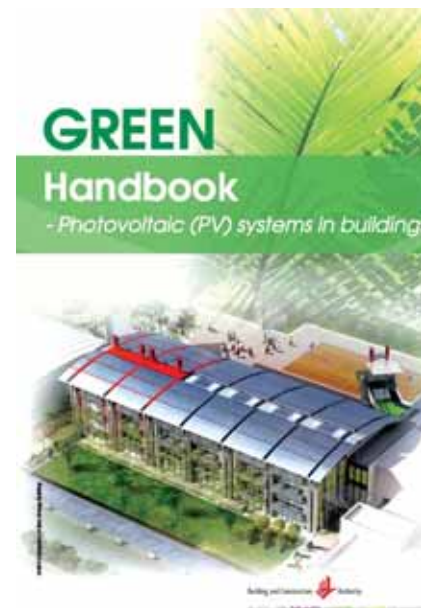
Learning Opportunities

Besides regular seminars on sustainability and green buildings, BCA also joined hands with industry stakeholders to learn from overseas experts at the US Green Building Council's (USGBC) Greenbuild 2007 Conference and Expo in Chicago, USA in November 2007. It was an invaluable learning experience for the Singapore delegation which included developers, architects, M&E consultants, energy consultants, builders, and government officers.

Separate site visits to outstanding green buildings, local green building developers and consultants and leading research institutes were also arranged to broaden the knowledge base. Significant knowledge and expertise in green topics were exchanged and gained, which would help further the Green Building Movement at home.



Various publications on Sustainable Construction were published to guide the industry and ease their conversion to sustainable construction methods.



The Photovoltaic (PV) handbook aims to show the industry and homeowners good design practices and implementation of photovoltaic systems.



MR KEVIN HYDES

CHAIR OF WORLD GREEN BUILDING COUNCIL

I think BCA has got the most progressive incentive scheme I have seen so far. If we can train the industry quickly and create experience to do green buildings, we can all mass develop cost effective green buildings. Green Mark is a great tool and it will get better progressively 100 buildings and soon to be a thousand buildings with the initiative in April.

(Mr Hydes is referring to the Green Mark legislation in April 08.)

REACHING OUT

BCA Breakfast Talk for CEOs

The first ever BCA Breakfast Talk for CEOs was held in February 2008. It served as an effective platform for the industry's leaders to connect and exchange views in their common goal of achieving a more environmentally friendly built environment for Singapore.

The event was launched by Mr. Mah Bow Tan, Minister for National Development. The keynote speaker, Mr. Kevin Hydes, Chair of World Green Building Council, spoke on corporate social responsibility and the business case for green buildings. More than 150 invited guests, comprising CEOs and high level management in the industry, showed their support for sustainability by turning up in tinges of green for the talk.

Green Building Design Competition

Bringing forth the message of sustainable living, BCA reached out to the younger generation by sponsoring Ngee Ann Polytechnic's Green Building Design Competition 2007. Secondary school students were introduced to green and sustainable building design during the competition. About 130 students from 15 different schools took part. Through hands-on experience, these students gained valuable insight into the benefits of green and sustainable buildings.

Public Awareness Exhibitions

BCA participated in a number of community events such as Clean and Green carnivals and Town Days to spread the message of green homes to a wider audience. One particular event was the Green Thumbs 2007, an outdoor event organised by NParks in September. Targeted at home owners and students, BCA's booth featured information on the BCA Green Mark and BCA Academy.

BCA Outdoor Campaign

Colourful bus and MRT advertisements displaying the benefits of living in a Green Mark home ran across Singapore as part of BCA's public outdoor campaign in March 2008. Much publicity blitz was created as commuters and the public were successfully lured to find out more about Green Mark homes and sustainable living.



Minister Mah Bow Tan (fourth from the left) highlighted at the Inaugural Breakfast Talk for CEOs that there is a business case for green buildings.



The Outdoor Campaign on buses and MRTs brought our message of the benefits of living in a Green Mark home to a wider audience.



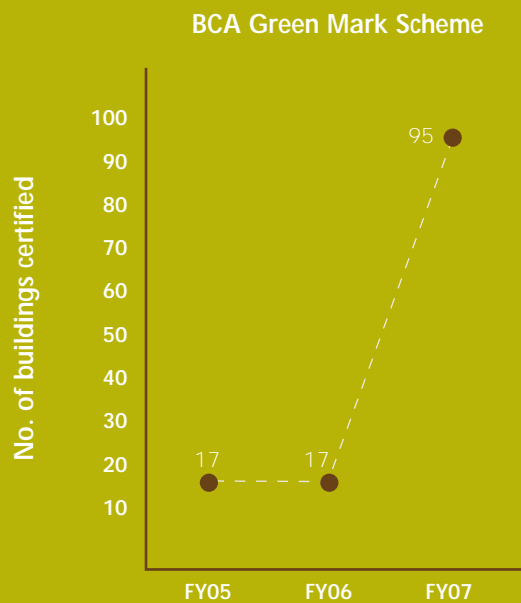
MR EDWIN KHEW

CHAIRMAN
THE SUSTAINABLE ENERGY
ASSOCIATION OF SINGAPORE

With the global concern on depleting energy sources and climate change, Singapore is heading in the right direction in initiating significant investments to promote R&D in the renewable energy sector. BCA has taken the lead by making energy efficiency a priority in the built environment. It is heartening to note that a government authority is walking the talk of advocating renewable energy and sustainable development. I strongly urge a quicker convergence of government and industry views, leading to a clear policy map to guide Singapore's development as a clean energy hub.



FY07 KEY STATISTICS SUSTAINABLE BUILT ENVIRONMENT



¥ **\$2.7 M** of Green Mark cash incentive given to **15** Green Mark projects

¥ **47** proposals received under MND Research Fund



FRIENDLY BUILT ENVIRONMENT

ENHANCING CAPABILITY AND GROWTH

New Code on Accessibility

As Singapore braces itself for a rapidly greying population, BCA aspires to do its part by creating a built environment that is seamlessly connected so that people of all ages and physical abilities are effortlessly integrated into the mainstream community.

This year, with the completion of the third revision of the Code on Barrier-Free Accessibility, we have reached a critical milestone in improving our physical environment. The revised Code incorporates new requirements to improve inter-connectivity between buildings, and from buildings to key surrounding facilities such as parks and transport nodes. This will minimise the obstructions posed to the elderly, parents with prams and wheelchair users as they move about.

To reflect our new attitude towards the provision of accessibility, the name of the revised code has been aptly changed from Code on Barrier-Free Accessibility in Buildings to Code on Accessibility in the Built Environment. The revised Code takes effect on 1st April 2008.

Accessibility Fund

The 5-year Barrier-Free Accessibility (BFA) Upgrading Programme is a holistic framework to raise industry capability and enhance standards in order to achieve a friendlier built environment for all.

To provide owners of existing buildings an extra nudge in the direction of enhancing accessibility, BCA launched the \$40 million Accessibility Fund in 2007. The new fund encourages owners of private commercial and institutional buildings that were built before the introduction of the Code on Barrier-Free Accessibility in Buildings to upgrade their buildings. The fund jointly pays up to 40% of the cost of works carried out to provide basic accessibility features. Eight applications have already been given the go-ahead, with three others pending approval.



The new Code on Accessibility incorporates new requirements to improve inter-connectivity between buildings.



The variety of exercise equipment at the elderly wellness station promotes healthy living among residents of The Coris, a Universal Design Award winner.



MR PHUA KOK TEE
CEO

SINGAPORE ACTION GROUP OF ELDERS, SAGE

With Singapore facing an ageing population, I am glad that BCA's mission to shape a friendly built environment that is accessible to people with different abilities and ages, goes hand in hand with SAGE's mission of promoting the growth and development of the elderly. I am heartened that BCA's third revision of the Code on Barrier-Free Accessibility incorporates new requirements for residential homes to provide for barrier-free features, giving due considerations for ageing-in-place safely and maintaining the quality of life.

DEVELOPING EXPERTISE

Sensory Garden

The BCA Sensory Garden includes various barrier-free accessibility features using the Universal Design Concept as its guiding principle. The aim is to provide a showcase example to the industry on applying Universal Design in architecture.

UD Seminars

Universal Design (UD) is fundamental to any friendly built environment. To encourage and facilitate the adoption of UD in the industry by stakeholders, BCA published a new UD guide for buildings of differing uses.

The guide was launched during the annual Universal Design Seminar in October 2007. In conjunction with the seminar, a three-day workshop on Improving Design and the User Experience through UD was also conducted jointly with The Glasgow School of Art at the BCA Academy to further expose our industry practitioners to best practices in Universal Design.

2nd BCA Universal Design Awards

With over 33 nominations from both the public and private sectors, participation in the first Universal Design Awards was very encouraging, signifying a growing awareness of UD. The owners and designers of seven winning buildings received their awards at the BCA Awards Night in May 2007. Thanks to the resounding support of the inaugural award, the second Universal Design Award was organised to accord recognition to outstanding industry players who have embraced UD as a first principle in their projects.

To emphasise the importance of the owner's commitment to provide and maintain UD features in the building, a new criterion on corporate philosophy was included. A total of 34 nominations were received for the second UD Award.



BCA's newly launched Universal Design Guide aims to help building owners and designers provide user-friendly features to suit diverse needs of users.



Efforts to ensure accessibility with the provision of ramps, lifts and automated doors are part of the reasons for the National Museum's win of the Universal Design Silver Award.



Public facilities within private residential estates are upgraded and made more user-friendly with barrier-free accessible features.



SM Goh Chok Tong showed great interest in BCA's exhibits on Accessibility in the Built Environment held at the Mountbatten Town Day in January 2008.

REACHING OUT

BFA in Estate Living

On behalf of the Ministry of National Development, BCA has been administering the Estate Upgrading Programme to make physical improvements to public land and facilities within private residential estates since 2002. This year, the Programme continues to focus on improving the user-friendly features incorporated in public spaces within residential estates that are selected for upgrading programmes. Our aim is to extend the sphere of accessibility to community living and heighten the awareness for demand of barrier-free accessible features in their living space.

Since the upgrading scheme was launched in 2000, 18 estates have benefited from significant improvements. In FY 2007, 7 more private residential estates were selected to undergo a facelift under the scheme.

Exhibitions in Heartlands

To reach out to a wider community audience, roving exhibitions on accessibility in the built environment were held in various locations across Singapore. The first stop was at Mountbatten Town Day in January 2008. Senior Minister Goh Chok Tong, MP for Marine Parade GRC was the guest of honour at the event which was attended by 5000 people. The exhibition was successful in educating the public about accessibility and raised their awareness of BCA's efforts to improve the quality of public spaces.

The Real Time Location System allows wheelchair users and the elderly to gain exclusive access to accessible toilets at the touch of a button.



Electronic signboards indicating the availability and locations of car park lots.



FY07 KEY STATISTICS FRIENDLY BUILT ENVIRONMENT

¥ **635** barrier-free buildings listed in BCA Website

¥ **34** applications, **9** winners of the Universal Design Awards

¥ **13** buildings applied for the Accessibility Fund, **8** were approved



TRANSFORMING THE INDUSTRY

ENHANCING CAPABILITY AND GROWTH

Easing the Supply Crunch

The year was characterised by close and proactive collaboration between BCA and the industry to better manage the supply crunch of construction resources as a result of the sharp rise in construction demand in the last two years:

¥ Deferment of Public Sector Projects

BCA worked closely with various public agencies to defer the award of a total of about \$4.7 billion worth of public sector projects until after 2009. This will allow existing construction capacity and resources to be channeled towards the timely delivery of existing projects.

¥ Increase Supply of Construction Manpower

Together with the Ministry of Manpower, BCA reviewed and relaxed construction manpower supply policies such as S-Pass quota, Dependency Ratio and Man-Year Entitlement requirements, to ease any potential bottlenecks in the system. During the year, 9 new Overseas Test Centres (OTCs) were opened in the People's Republic of China (PRC), India, and Bangladesh.

The spike in construction workload has resulted in a surge of demand for crane operators. To alleviate this tight supply situation, registration of skilled and experienced foreign crane operators was temporarily allowed to supplement the local pool. As such, firms are allowed to hire up to 2 foreign crane operators for every 1 new local crane operator employed from 24 May 07. BCA also partnered self-help groups to assist the industry in sourcing, placing, and training new local operators.



BCA Academy's mission is to provide quality training, learning and research programmes for the development of an excellent built environment.



To ease the supply crunch for construction manpower, the BCA Academy stepped up its training programmes such as crane operation.



MR SEAH CHOO MENG
EXECUTIVE CHAIRMAN
DAVIS LANGDON & SEAH (SINGAPORE) PTE LTD

The Practice Note on cost sharing is a novel and equitable way to mitigate the plight of contractors and concrete suppliers during those difficult times of increasing material cost. I am glad to be one of the drivers for the Note and hope that this will set the precedent and pave the way for more cooperation between government agencies and the industry.

¥ Expand Contracting Resources

BCA reviewed several Contractors Registry System (CRS) registration requirements to facilitate the upgrading of existing contractors. These include implementing the Tender Limits Variable Component which raises the tender limit of affected CRS grades to reflect the recent trend in construction costs and expanding the list of acceptable professional qualifications of personnel for CRS registration.

Overseas business trips with the developers, contractors and consultants were also organised to interest suitable and competent new foreign contractors and specialist sub-contractors in our market with information on our construction prospects, local regulations and market conditions.

¥ Provide Essential Information

To enable the industry to better estimate costs and reduce uncertainty, BCA enhanced the provision of essential information to the industry. Key information on construction demand, market prices of basic building materials is now available on the BCA website.

Strengthening Industry Resilience

Following the abrupt disruption in the supply of concreting sand and granite early last year, BCA facilitated the Government co-sharing arrangement for the increase in prices of sand and granite for affected on-going public sector projects. This would minimise the cost impact on contractors working on these projects. BCA also worked closely with the industry to introduce a Practice Note endorsed by the Construction Industry Joint Committee (CIJC). The Practice Note provides a similar basis for the private sector to adopt cost sharing arrangements on an ex gratia basis.

BCA is planning to introduce a licensing scheme for importers of essential construction materials such as sand and granite to ensure a reliable and secure supply of these imported materials of acceptable quality for use in construction works.



Overseas business trips with the developers, contractors and consultants were organised to interest suitable and competent new foreign contractors into our market.



BCA will be introducing a licensing scheme for importers of essential construction materials such as sand and granite to ensure a reliable and secure supply.



Ms CHAW SUU HLAING

EX-STUDENT OF BCA ACADEMY
CURRENTLY A SECOND YEAR STUDENT IN THE
CIVIL ENGINEERING FACULTY AT NTU

I wish to convey my deepest appreciation and gratitude to everyone at BCA Academy, whose dedication and commitment have helped me progress in my education and gain admission into Nanyang Technological University. I had spent a fruitful three years at BCA Academy where invaluable knowledge was imparted by the lecturers. The Academy is indeed an institution that provides quality learning and training for the development of an excellent built environment. As an appreciation for my alma mater, I will strive to do my very best at NTU and contribute to shaping the built environment."

Improved Dormitories for Foreign Workers

BCA oversees the provision of a new generation of self-contained foreign worker dormitories which provide a variety of social and recreational facilities. The new amenities include a kitchen or dining area, laundry facilities, barber services, mini-mart, canteen, indoor gym, recreational areas, TV rooms, outdoor field and games courts. These facilities cater to the social needs of the workers and enhance their living conditions.

DEVELOPING EXPERTISE

BCA Academy Revamp

May 2007 saw the transformation of the Construction Industry Training Institute into the BCA Academy of the Built Environment. With the transformation, the Academy has repositioned itself as a leader in education and research to help the industry shape the built environment. In November 2007, the BCA Academy of the Built Environment held its first graduation ceremony for 360 graduates.

Training Masterplan

To facilitate the industry's growth and development, BCA Academy has put in place a training map to develop expertise in key areas and to establish a clear progression path of knowledge attainment. In line with BCA's mission and vision, the Academy stepped up its training capacity especially in the areas of sustainability, barrier-free accessibility, safety and crane operation.

To develop niche specialisation in the industry, professional certification courses were introduced in 2007. These courses include those leading to qualifications as Certified CONQUAS/ Quality Mark Managers, Green Mark Managers/ Professionals, Energy Managers and Structural Steel Engineers/ Supervisors.

As part of the Government's commitment to adopt BCA Green Mark certification for new buildings and the strong demand for green buildings, a new 3-year full-time Diploma programme in Mechanical Engineering with a special emphasis on Green Building Technologies, was launched in October 2007. This will help the industry build up expertise to support the growth of green buildings.



The variety of social and recreational facilities in the foreign worker dormitories enhances the workers living conditions.



The BCA Academy held its first graduation ceremony for 360 graduates in November 2007.



The wheelchair interactive at the BCA Gallery allows users to experience first-hand difficulty of wheeling over different gradients.

Memorandum of Cooperation

To expand the depth of training capability for the industry, the BCA Academy signed a Memorandum of Cooperation with the Singapore Polytechnic's School of Mechanical and Manufacturing in January 2008. With the signing of the MOC, the two institutes will share resources and expertise to the benefit of students taking the following diplomas:

- ¥ Mechanical Engineering (GBT) offered by BCA Academy
- ¥ Resort Facilities Services and Management offered by Singapore Polytechnic

National Building Qualification

To enhance the career prospects of our graduates, the BCA Academy has introduced the National Building Qualification (NBQ). The NBQ is issued by the Academy to the graduates of its supervisory training programmes. The new NBQ framework gives opportunities for trainees with different learning abilities to enroll in courses at the appropriate level, hence enabling those with lower formal education to upgrade their qualifications.

Investment Allowance Scheme

BCA administers the Investment Allowance Scheme (IAS) which is a financial assistance programme that the government has set up to help the construction industry stay competitive and ready for challenges and opportunities. The scheme supports capital investments in technologically advanced construction equipment which will go a long way in helping firms increase productivity and quality. In 2007, close to 70 firms leveraged on the IAS to improve their capability, a three-fold increase since 2004. The corresponding investment value achieved a sterling six-fold increase to \$60 million.

REACHING OUT

BCA Gallery & Sensory Garden

Two additional vehicles for BCA's public outreach efforts are the new BCA Gallery and Sensory Garden. With its official opening in April 2008, the BCA Gallery will showcase the development of Singapore's built environment and raise public awareness of BCA and the industry's role in shaping the built environment.

With the MOE learning journey programme in place, the Gallery and Sensory Garden will serve as critical platforms to inspire and involve the next generation in shaping our common vision for the built environment.



The BCA Academy introduces the National Building Qualification to enable those with lower formal education to upgrade their qualification.



The design and layout of the Sensory Garden promotes Universal Design by heightening visitors' awareness through the five senses.



The new BCA Gallery showcases BCA's vision for the built environment.

Career Promotion

While we build expertise in the industry, it is also important to reach out to aspiring students and draw them into establishing a career in the built environment. In order to attract these bright young talents, BCA had partnered with the industry to offer a new scholarship scheme, the BCA-Industry Built Environment Scholarship.

Besides organising career fairs and school talks, BCA also embarked on a publicity drive throughout April and May 2007. The outdoor advertisement campaign aimed to raise public awareness of the diverse career opportunities in the industry.

Extending Expertise Overseas

BCA continues to make progress in facilitating our industry's efforts to export their expertise in construction-related services.

In 2007, the total number of overseas consultancy services secured by Singapore firms increased by 13% compared to 2006. Out of 406 consultancy projects secured, China, South East Asia, and India accounted for around 85% of the total. For the same period, our construction firms' export volume increased by 29% from S\$2.1b in 2006 to S\$2.7b in 2007 despite the heavy demand in Singapore's construction industry. In 2007, the Middle East was the largest market for Singapore construction firms who contributed 64% to the total construction export market.

To promote Singapore construction exports, a total of 12 business trips to the Middle East, North Africa, China, and India in 2007 were conducted. BCA also assisted MND in identifying suitable sites in China for the development of an eco-city in Tianjin Municipality, a joint project by both the governments of Singapore and China. BCA is also closely involved in the drafting of the green building standards for this iconic green district in Tianjin.



A Career Promotion Outdoor Campaign was launched to raise awareness of the diverse career choices in the building and construction industry.



In 2007, the Middle East was the largest market for Singapore construction firms. The Emirates Morroco Hotel (Bab Al Qasr) in Abu Dhabi is one of the projects clinched by local consultancy firm, Surbana International Consultants Pte Ltd.

FY07 KEY STATISTICS TRANSFORMING THE INDUSTRY

¥ Physical productivity of **2.55** man days per square metre

¥ **100,000** personnel trained at BCA Academy

¥ **91,358** workers skill-tested and **60,281** certified

¥ **9** more new overseas testing centres set up, bringing the total number of overseas testing centres to **22**

¥ **33** career talks conducted in schools

¥ **\$2.7B** worth of overseas construction projects clinched in 2007

¥ **406** overseas consultancy projects clinched in **27** countries in 2007



BUILDING PARTNERSHIPS

IMPROVING TIES

Pro-enterprise Dialogues

BCA organised a series of dialogues with key industry players such as the developers, architects, engineers and builders to gather feedback on how we could further improve our customer responsiveness and services, and thereby develop a pro-enterprise regulatory framework. Eight such engagement sessions were held with 81 participants in 2007.

CEO Networking Lunch

We recognise the importance of engaging the industry to seek support and collaboration for our policies and initiatives. The CEO Networking Lunch forum serves as a platform to enhance our links and communication with the various key external partners. Four lunches with the different interest groups, including the media, the academia and the industry have been organised so far.

Friday@BCA

A new initiative, Friday@BCA sessions were organised to brief industry players on details of new policies and regulations such as amendments to the Building Control Act and Green Mark Legislation. The aims of these sessions are to explain the rationale of policies and regulations and address feedback from the industry.

ENERGIZING THE ORGANISATION

I-Class Certification

Innovation is a valued trait in BCA. We were awarded the Innovation Class (I-Class) certification by SPRING Singapore in February 2008. With this recognition, BCA achieved a key milestone in its journey to be one of Singapore's most innovative and creative organisations. Over the past year, key innovation activities for staff have included the launch of a \$100,000 experimentation fund, the Chairman's Innovation Trophy, and an Innovation and WITs Convention.

BCA Core Values

Core Values are critical in defining our personal work ethics and attitudes at BCA. Throughout the year, several staff engagement sessions were held with the management team to review and internalise our new Core Values - We Care, We Dare to Dream and We Can Do.



The CEO Networking Lunch forum serves as a platform to enhance our communication with the various key partners.



Our staff thrives on the BCA core values - We Care, We Dare to Dream and We Can Do.



MR HWANG YEE FEI

DEPUTY MANAGER
JTC CORPORATION/ ONE-NORTH
DEVELOPMENT GROUP

I wish to thank BCA for the countless advice and the unconditional support towards the Fusionopolis project and especially for swiftly facilitating our application for its Temporary Occupation Permit. Your kind assistance during this period is greatly appreciated by JTC and Jurong Consultant. We look forward to a closer working relationship now and in the future.

Exemplary Team Award

BCA introduced the Exemplary Team Award in 2007 to inspire staff to take ownership of critical issues and be creative and resourceful in solving problem. Outstanding inter-department and inter-division teams were recognised and rewarded in their ability in solving crises and work as a team in critical situations.

Professional Industrial Attachments

BCA has enhanced its Professional Industrial Attachment to enable BCA officers to work within the private sector on short-term attachments to gain practical experience for up to a month at a time. These attachments give officers opportunities to update themselves on the latest technology and expose them to solutions used within current private sector projects.

Learning Opportunities

BCA officers are encouraged to take part in highly focused study trips together with industry partners and experts, to learn new and innovative technologies, while gaining a better understanding of overseas trends, policies and practices. In 2007, officers from various divisions benefited from more than 20 such learning opportunities with the industry.

i-Share @ BCA Seminar

The i-Share @ BCA Seminar was a new initiative introduced last year under our Strategic Staff Development Plan. The objective is to provide a forum for our staff to share cross-departmental work and key initiatives which will enable them to integrate knowledge and develop their expertise further.

Foster Communications Within

Throughout 2007, various communication channels were initiated to foster better communication between the staff and senior management team in BCA. Channels such as a quarterly e-newsletter, fortnightly interviews@intranet, and the BCA in Action segment were employed to engage staff members in informative dialogue.



Attached to Arup Singapore Pte Ltd as Resident Engineer, Grace Mui (R) from the Building Engineering Division had a chance to participate in the construction of the Marina Bay IR.



BCA officers and industry partners went on a trip to China in April 2008 to learn about structural steel design, fabrication and applications.



PROF HENG CHYE KIANG
DEAN

SCHOOL OF DESIGN AND ENVIRONMENT, NUS

I appreciate the thought and consideration behind BCA's engagement of its partners, especially in an informal setting. Its networking sessions are an ideal opportunity to enhance communication links and cement further partnerships.

REACHING OUT**Youth Outreach through EcOasis**

BCA's public outreach efforts target at different interest groups and communities. For school children and youths, we had supported a non-profit organisation, ECO Singapore, in the building of a small scale eco house called EcOasis. Located at the Singapore Science Centre, the EcOasis will provide a platform for us to promote environmental awareness and engage our youths to take ownership of the built environment by adopting sustainable living habits.

Roving Exhibitions

To create consumer demand for a more sustainable and friendly built environment, BCA actively participated in heartland exhibitions and organised roving exhibitions in educational institutions, shopping malls and neighbourhoods.

Corporate Social Responsibility

BCA cares about the well-being of the community. In 2007, we reached out to the community through various charity-related events:

- ¥ Donation of \$1,000 to the Society for Physically Disabled and supporting the event fund raising event "Breaking the Barriers Walk" by sending a team of BCA participants.
- ¥ Supporting the President's Challenge 2007 by organising and sponsoring a visit to the Science Centre for the Fei Yue Student Care Centre. More than 60 students participated in the event.
- ¥ Donation of items by BCA Staff in support of the Salvation Army.
- ¥ Supporting the Singapore Kindness Movement by organising the sale of "Kindness Stories" book, aimed at spreading the message of graciousness and courtesy.
- ¥ Organising a Blood Donation Drive in March 2008 in support of the Blood Bank.
- ¥ Supporting MNDRC's Pedal for Hope fundraising event for ASPN Chao Yang School and SAMH Oasis Day Centre. BCA officers raised a total of \$6,261.50 from the pledge card donations.
- ¥ Setting up an internal CSR committee for a more concerted approach towards corporate social initiatives and programmes.



BCA set up an exhibition booth at the Geylang Serai Town Day on 1 July 2007 to create awareness on the attributes of a green building.



A team of BCA participants took part in the fund raising event - Breaking the Barriers Walk at Tampines in June 2007.

FY07 KEY STATISTICS BUILDING PARTNERSHIPS

¥ BCA and staff donated **\$10,345.50** cash to various charitable causes

¥ **90** hours of training for each staff

¥ **41** staff placed on Associate Professional Scheme

¥ **43** BCA Service Excellence Award winners

¥ **7** staff clinched the National-level Service Excellence Awards

Last but not least, we thank the following BCA colleagues for their sporting participation:

Angie Tan
Cassandra Cheng
Catherine Wee-Loh
Chan Wing Wei
Chia Yen Ling
Eddy Susilo
Grace Chng
Jacqueline Wong
Khoo Teng Peng
Kelvin Yeo and daughter, Lucia
Kenneth Wee
Kevin Tan
Leong Ee Leng
Lian Seow Ngo
Lim-Ho Yee Har
May Siu
Ng Siew Kuan with son, Chen Yu and daughter, Tong Yu
Pauline Goh
Regine Lee
Serene Peh
Tan Yong Beng
Tham Kai Wai
Victor Lian
Vinna Tan
Wong-Ling Yuet Chun
Wong Jung Keen
Wong Kwan Hoe

FINANCIAL REPORT



We shape a **safe**, **high quality**, **sustainable** and **friendly** built environment.

5 Maxwell Road #16-00 Tower Block MND Complex Singapore 069110
Telephone: 65 6325 7720 Facsimile: 65 6325 4800 www.bca.gov.sg